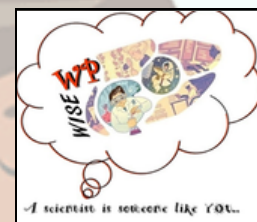


**WILLIAM PATERSON UNIVERSITY
WOMEN IN SCIENCE AND ENGINEERING (WISE)**

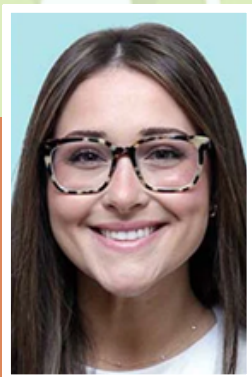


ALUMNI-SPONSORED SEMINAR SERIES PRESENTS...

BEYOND THE TEXTBOOKS: A NEW GRADS PROFESSIONAL JOURNEY FROM CLASSROOM TO CLINICAL PRACTICE

**by Nicole Joachim, M.S., CCC-SLP
Speech Language Pathologist
Holy Name Medical Center, Teaneck, NJ**

Nicole Joachim is a speech-language pathologist who is dedicated to providing patient-centered care through empathy and evidence-based practice. She earned her M.S. in Communication Disorders from WPU in 2024 and completed her graduate internship at Mountainside Medical Center before joining the rehabilitation team at Holy Name Medical Center. Her clinical interests include early intervention, preschool and school-aged language development, articulation and phonological disorders, and AAC (augmentative and alternative communication). In this WISE seminar, she will discuss the challenges and benefits of her work and her professional journey.



**TUESDAY | MARCH 10, 2026
12:30 PM | SCIENCE HALL WEST 301**

All WPU students are welcome. Lunch will be served!
For more information, contact Dr. Healey (healeyk3@wpunj.edu)

This year's WISE seminar series is made possible through the support and generosity of alumni Margaret Landi '74, Scott Hofsess '92, and Victoria Cardwell '16.