

**William Paterson University  
in partnership with  
Paterson Public Schools**

**Professional Development Schools  
1999-2012**

# Professors in Residence

- Work with the continuum of teachers in the building to provide school-based professional development which focuses on improvement of teacher preparation and practice and student learning.
- Work to meet school goals by fostering a strong sense of professional community and new leadership opportunities.

# William Paterson University

## College of Education

### Professional Development Schools

- <http://blog.wpunj.edu/WPvid/2011/coe-partners/>

# Progress Toward School Level Goals

Improve achievement in math  
and language arts as measured  
by NJASK.

# Individual School Goals

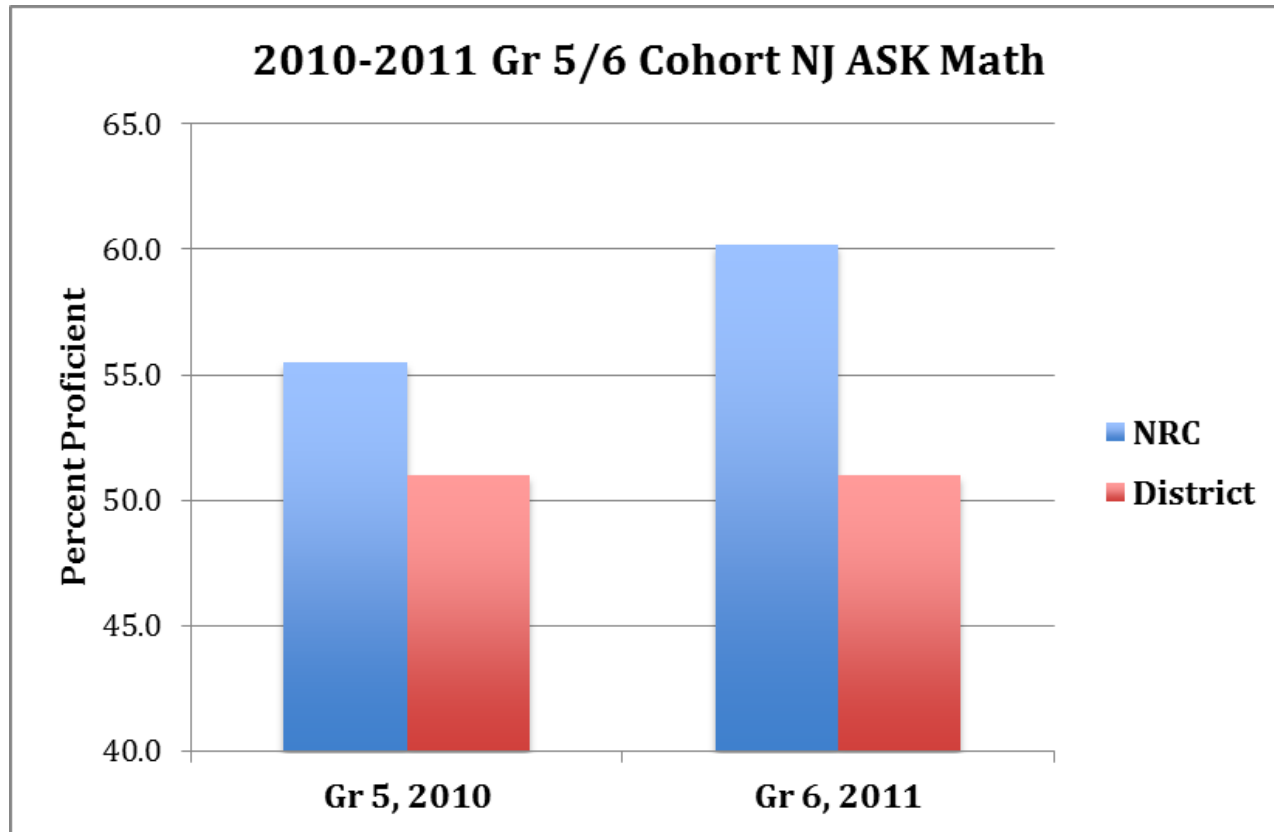
- School #7 - Help students make positive choices for future life experiences (WP mini grant focused on developing leadership for grade 8).
- GOPA – decrease incidents of classroom disruptions (PIR models student engagement i.e., clickers, quick response sleeves, etc.).
- School #12 – engage parents and community in fostering the quality of children’s education (Saturday math academy, tutors, video resources for home use, school volunteers, book donations, murals).

# New Roberto Clemente

## 2008-2012

School NRC Math								
% Proficient								
	2008		2009		2010		2011	
Grade	NRC	Dist	NRC	Dist	NRC	Dist	NRC	Dist
3		70.2		50.8	57.0	53.2	60.0	54.8
4		64.5		53.4	59.1	52.9	57.4	55.7
5		49.1		49.0	55.5	51.0	61.9	55.8
6		45.6		43.5	46.4	43.5	60.2	51.0
7		39.2		37.3	26.6	31.9	28.1	36.2
8		40.9		46.8	48.6	42.3	35.5	40.8

# NRC



# NRC Community Garden





# NRC Community Garden

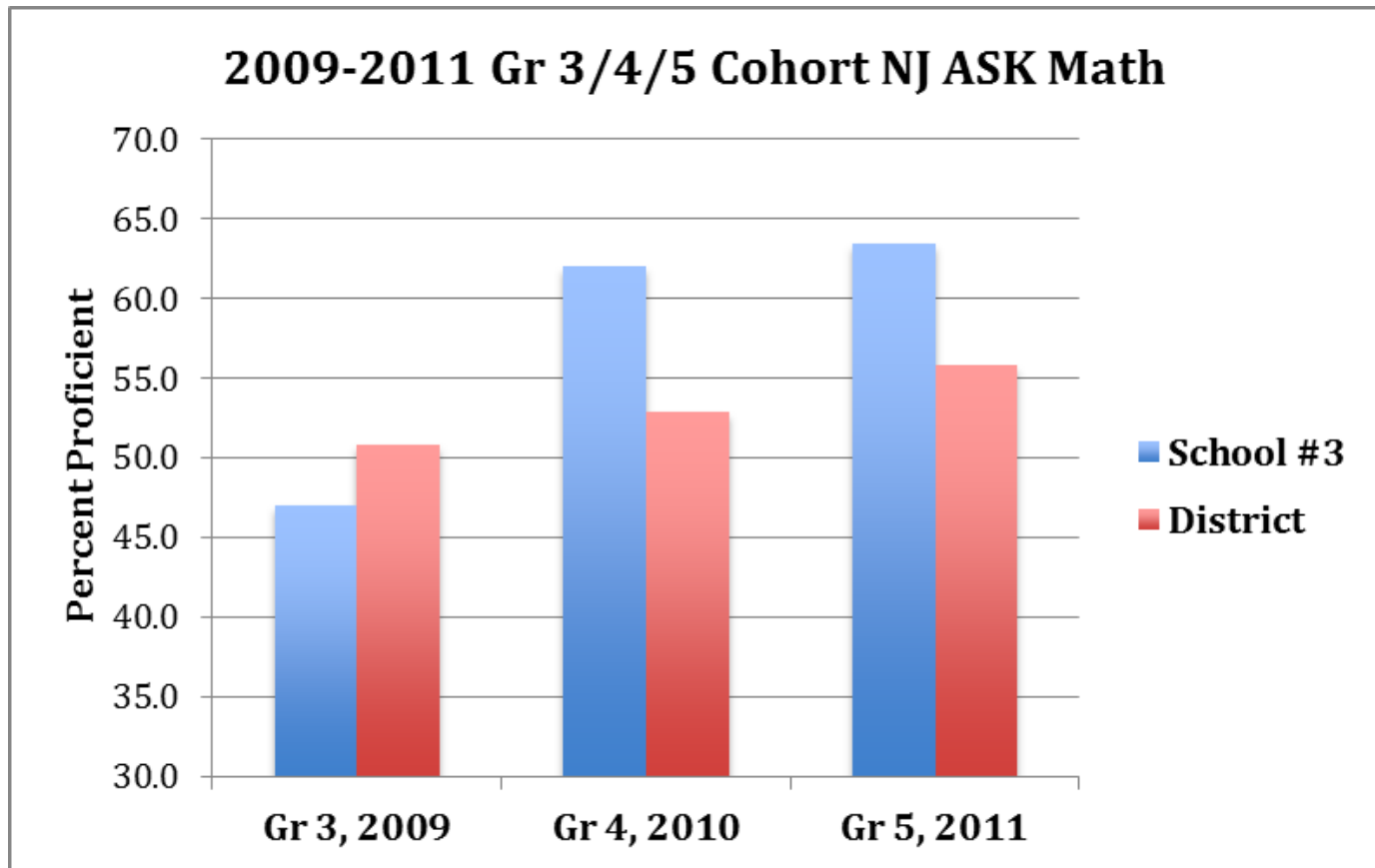


# School #3

## 2007-2012

School #3 Math								
% Proficient								
	2008		2009		2010		2011	
Grade	#3	Dist	#3	Dist	#3	Dist	#3	Dist
3	60.0	70.2	47.9	50.8	57.4	53.2	47.5	54.8
4	71.9	64.5	60.3	53.4	62.0	52.9	76.8	55.7
5	73.6	49.1	64.8	49.0	69.3	51.0	63.5	55.8
6	60.0	45.6	61.2	43.5	37.0	43.5	46.2	51.0
7	52.3	39.2	50.0	37.3	39.6	31.9	31.5	36.2
8	37.5	40.9	55.8	46.8	56.3	42.3	47.8	40.8

# #3



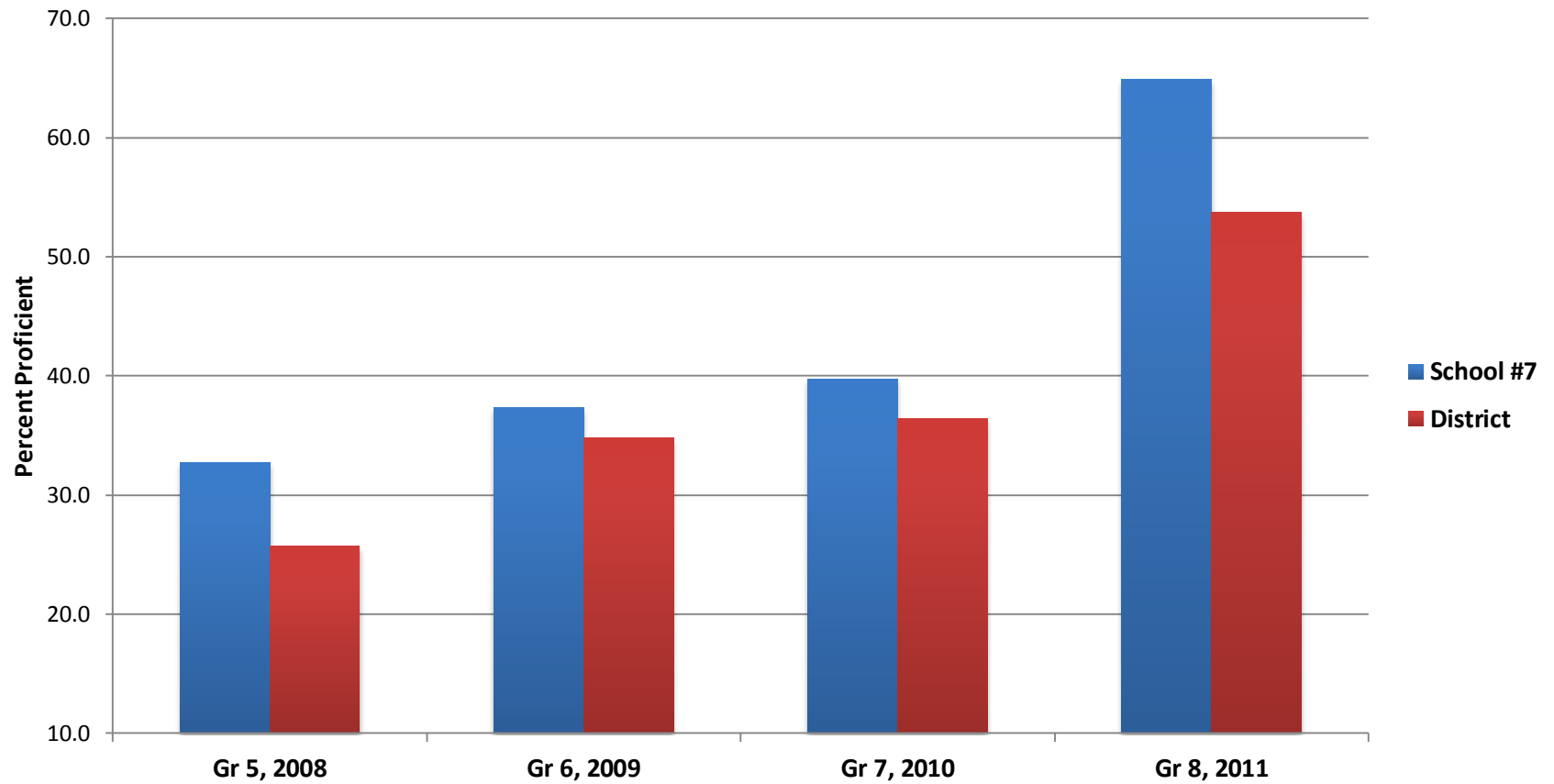
# School #7

## 2007-2012

School #7 Language Arts								
% Proficient								
	2008		2009		2010		2011	
Grade	#7	Dist	#7	Dist	#7	Dist	#7	Dist
3								
4								
5	32.7	25.7	38.3	33.1	17.2	34.1	21.7	25.9
6	22.0	22.4	37.3	34.8	36.2	32.8	29.3	36.9
7	46.3	37.1	30.4	41.8	39.7	36.4	27.8	30.7
8	71.4	56.7	49.2	52.4	44.3	57.7	64.9	53.7

# #7

2008-2011 Gr 5/6/7/8 Cohort NJ ASK LAL



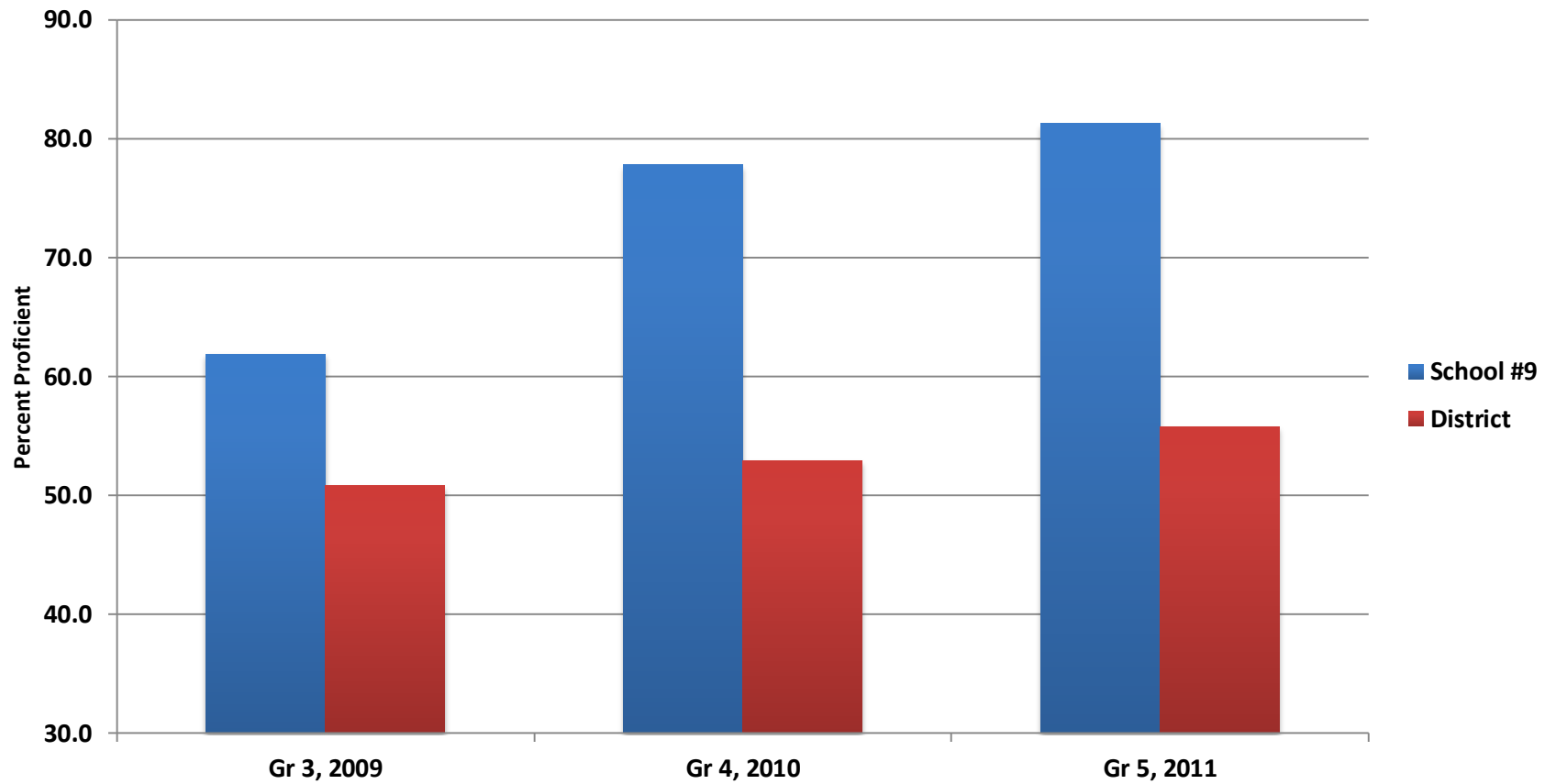
# School #9

## 2007-2012

School #9 Math								
% Proficient								
	2008		2009		2010		2011	
Grade	#9	Dist	#9	Dist	#9	Dist	#9	Dist
3	79.1	70.2	61.9	50.8	71.9	53.2	68.5	54.8
4	81.3	64.5	75.0	53.4	77.8	52.9	75.8	55.7
5	72.3	49.1	75.8	49.0	82.4	51.0	81.3	55.8
6	65.3	45.6	62.5	43.5	75.2	43.5	78.6	51.0
7	68.0	39.2	57.7	37.3	55.6	31.9	64.7	36.2
8	63.3	40.9	70.4	46.8	59.4	42.3	57.4	40.8

# #9

2009-2011 Gr 3/4/5 Cohort NJ ASK Math







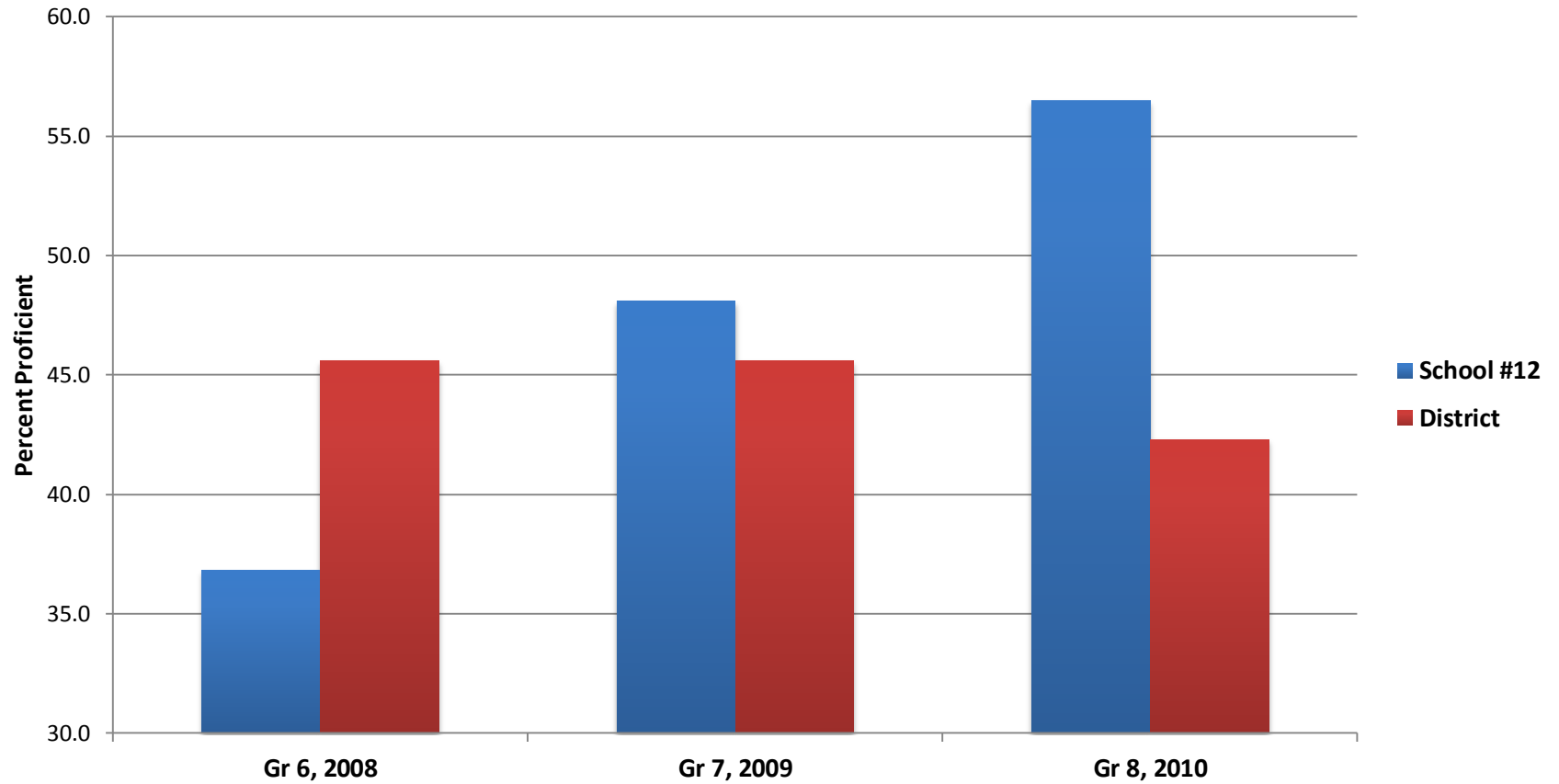
# School #12

## 2007-2012

School #12 Math								
% Proficient								
	2008		2009		2010		2011	
Grade	#12	Dist	#12	Dist	#12	Dist	#12	Dist
3	63.1	70.2	16.7	50.8	17.4	53.2	39.7	54.8
4	43.6	64.5	42.1	53.4	23.3	52.9	55.1	55.7
5	44.2	49.1	44.3	49.0	52.7	51.0	43.0	55.8
6	36.8	45.6	46.1	43.5	41.7	43.5	48.8	51.0
7	25.0	39.2	48.1	45.6	38.0	31.9	37.0	36.2
8	34.0	40.9	41.8	46.8	56.5	42.3	43.2	40.8

# #12

2008-2010 Gr 6/7/8 Cohort NJ ASK Math



# #12



Student-designed murals

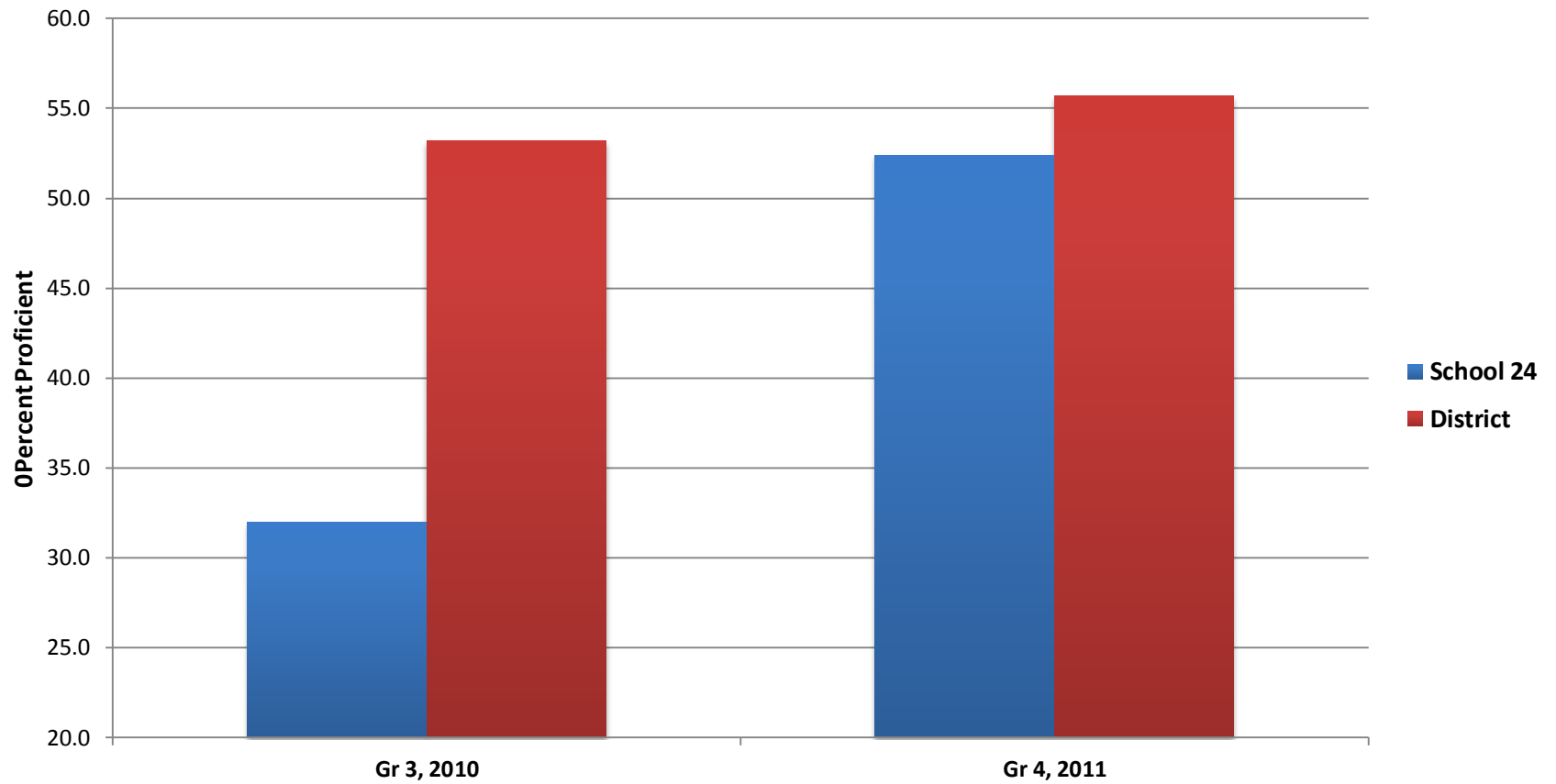
# School #24

## 2010-2012

School #24 Math				
%Proficient				
	2010		2011	
Grade	#24	Dist	#24	Dist
3	32.0	53.2	59.4	54.8
4	56.7	52.9	52.4	55.7
5	42.9	51.0	44.6	55.8
6	38.3	43.5	42.9	51.0
7			35.2	36.2
8				

# #24

2010-2011 Gr 3/4 Cohort NJ ASK Math



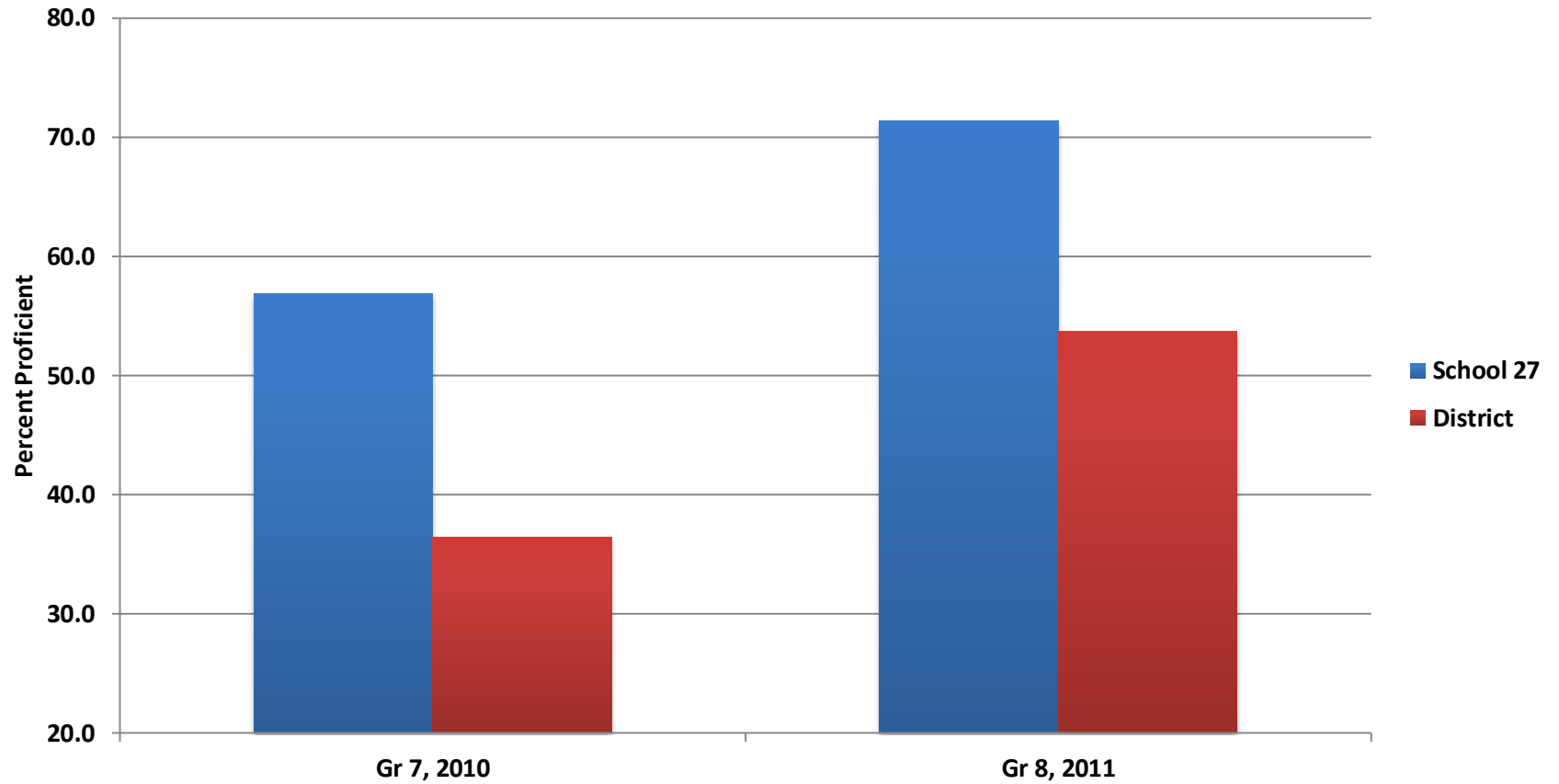
# School #27

## 2010-2011

School #27 Language Arts								
% Proficient								
	2008		2009		2010		2011	
Grade	#27	Dist	#27	Dist	#27	Dist	#27	Dist
3		68.0	26.7	33.0	40.7	31.2	39.8	33.1
4		61.2	36.2	32.1	27.0	34.3	33.0	33.2
5		25.7	43.7	33.1	42.5	34.1	42.2	25.9
6		22.4	62.8	34.8	44.5	32.8	43.2	36.9
7		37.1	52.7	41.8	56.9	36.4	43.2	30.7
8		56.7	75.0	52.4	75.0	57.7	71.4	53.7

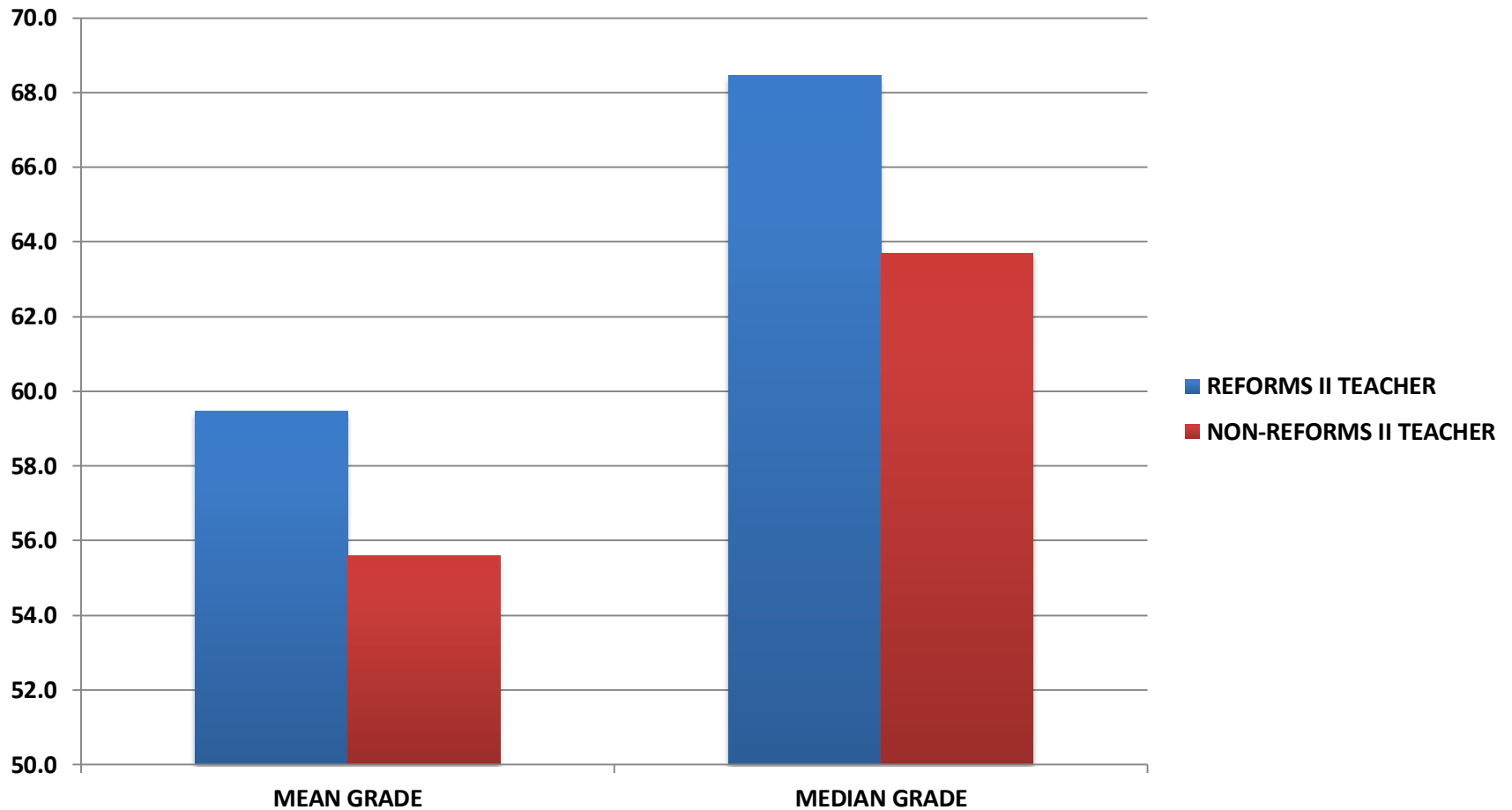
# #27

2010-2011 Gr 7/8 Cohort NJ ASK LAL



# Eastside GOPA

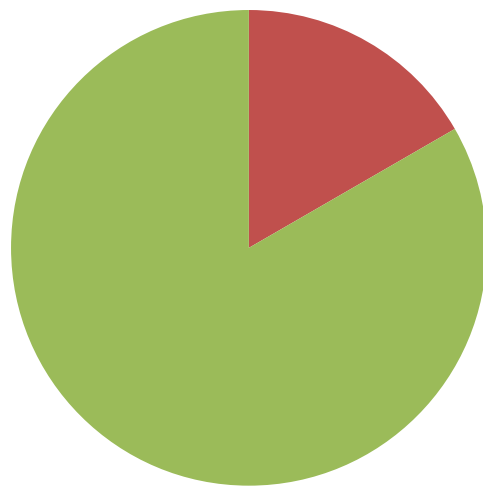
## MAST- Physics – 2010-2012





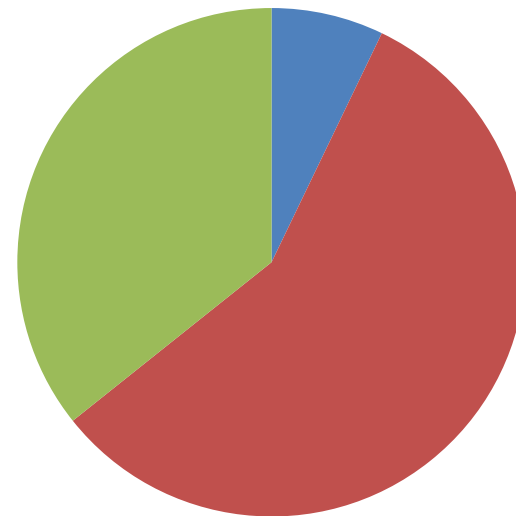
# School #6

## REFORMS – 2006-2012



Proficiency of Students in Math  
for other 3rd grade classes

■ Adv. Prof.  
■ Prof.  
■ Part. Prof



Proficiency of 3<sup>rd</sup> grade students in  
Math for J. Gajadhar

■ Adv. Prof.  
■ Prof.  
■ Part. Prof

Data from 2010/2011

# 2010-2011 data

- 134 tutors in Paterson Public Schools
- 1957 days of practicum and student teaching in Paterson Public Schools
- 108 registrants from Paterson PDSs for WP free professional development workshops offered through Institute for Teaching, Learning and Leadership

# PDS benefits

- School-based professional development
- Grant support
- Free or reduced rate professional development workshops
- Free SIOP training
- Mini-grants
- Free PD and classroom resources for teachers and students

# What PDS teachers say....

**“The presence of William Paterson creates an environment of success, learning and growth. Students and teachers realize the opportunity for growth and appreciate it. It helps the students feel appreciated for the work they do and encourages them to work for their goals.”**

**“The WPU partnership provided students and staff with PD, materials and many programs that benefitted everyone involved. Student engagement, achievement and participation increased.”**

**“Through our partnership with William Paterson University, our school has received a tremendous amount of much needed supplies, professional development and student teachers.”**