

Valley Road Classroom Equipment



VCR Operations (Tiered Classrooms)

Step 1: Make sure the [projector\(s\)](#) is/are turned on and the [projector screen\(s\)](#) is/are down.

Step 2: Touch the picture of the "VHS/VCR" on the Crestron Display, located on top of the podium.



VCR

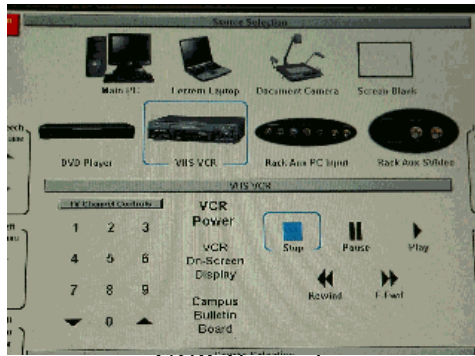
Step 3: Turn the VCR power on. **The VCR is located on the equipment tower in the AV Closet.**



Equipment Tower, located in the room's AV Closet

Step 4: Insert the tape.

Step 5: Please use the controls located on the Crestron Display on top of the podium to operate the VCR.



VCR Controls

Step 6: Adjust the volume by using the "Program Volume" controls located on the right side of the Crestron Display.



Program Volume

Step 7: When finished using the VCR, please turn the VCR power off.