

# Parking Committee

April 28, 2015



# Paving: Lots 4,6 and Valley Road

## State Contract Price

DESCRIPTION	UNIT	QUANTITY	UNIT PRICE	AMOUNT
MOBILIZATION	UNIT	1	\$2,000.00	\$ 2,000.00
TRAFFIC DIRECTOR, FLAGGER	HOUR	8	\$95.00	\$ 760.00
TACK COAT	GALLONS	2617	\$0.01	\$ 26.17
HOT MIX ASPHALT 9.5 M64 SURFACE COURSE	TON	4229	\$83.00	\$ 351,007.00
MILLING 2" AVERAGE DEPTH (2001 TO 8000 S.Y)	SQ. YARD	34,664	\$5.20	\$ 180,252.80
SAWCUTTING	LIN FEET	40	\$0.00	\$ -
9"x16" CONCRETE VERTICAL CURB	LIN FEET	40	\$48.50	\$ 1,940.00
CONCRETE SIDEWALK, 4" THICK	SQ. YARD	0	\$80.00	\$ -
DETECTABLE WARNING SURFACE	SQ. YARD	32	\$325.00	\$ 10,400.00
PREFORMED THERMO HANDICAPPED SYMBOL	UNIT	7	\$0.00	\$ -
TEMPORARY TRAFFIC STRIPES, 4"	LIN FEET	0	\$0.31	\$ -
TRAFFIC MARKINGS, THERMOPLASTIC	SQ. FEET	1400	\$5.80	\$ 8,120.00
TRAFFIC MARKINGS, LINES,THERMOPLASTIC	LIN FEET	16,100	\$0.64	\$ 10,304.00
		TOTAL		\$ 564,809.97

# Bidding versus State Contract

State Contract Price	\$564,810+
Top Line Construction	\$565,925
Crossroads	\$570,436
Paving Materials LLC	\$575,833

Conclusion: Bidding and State Contract Pricing yield similar results.



# University Hall Wayfinding



## Paving Boundary

# Parking at Facilities and Police

- Reserved for Chief and PPO Director
- Two handicapped spaces
- Visitors?
- Balance reserved for State Vehicles
- Rear driveway of Facilities also for State Vehicles
- Staff redirected to Lot 1 with Access Gate
- Enforcement
- Contractor Parking
- Print Shop
- Waste Management



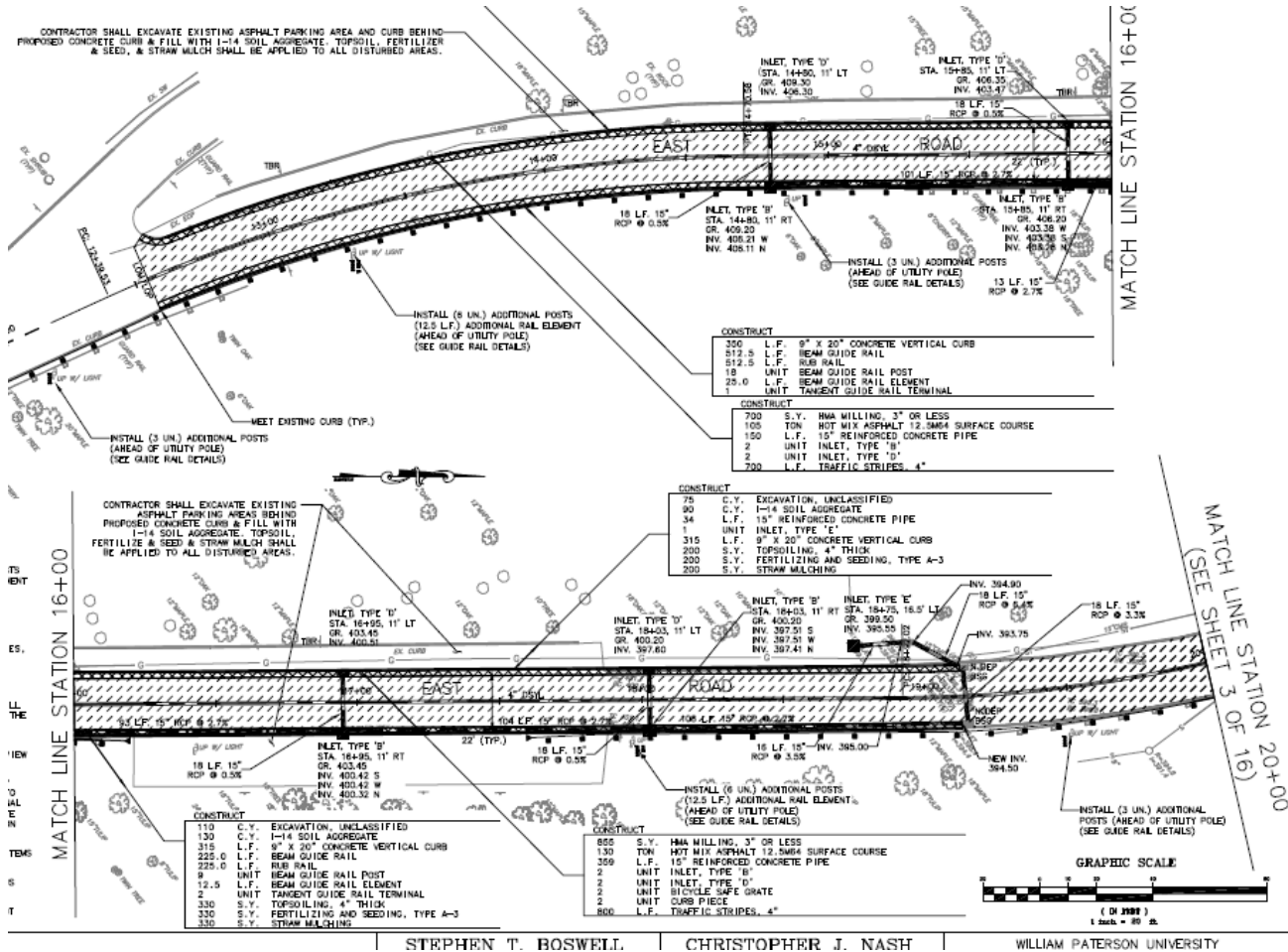




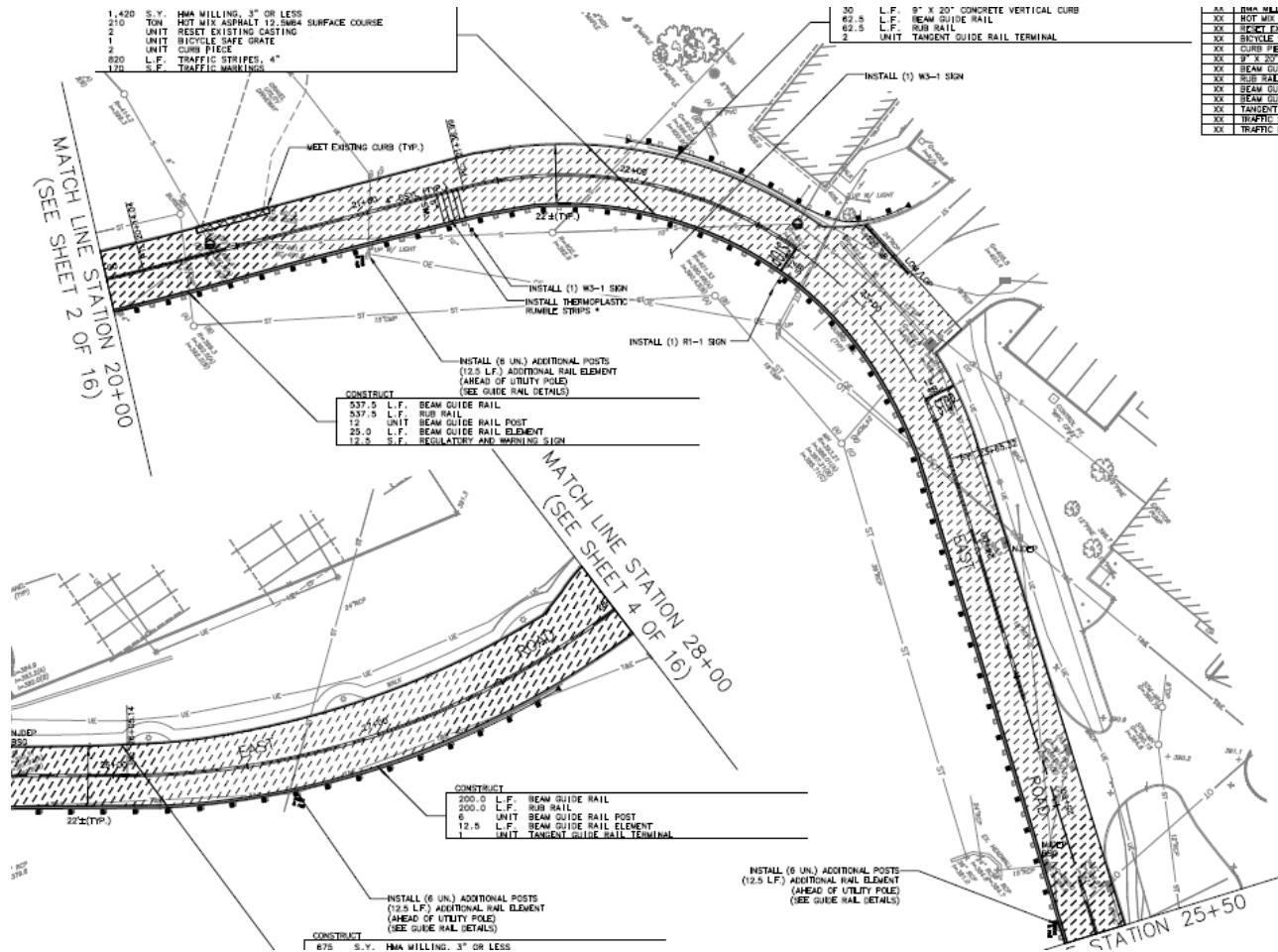
# High Point Park



# East Road Widening

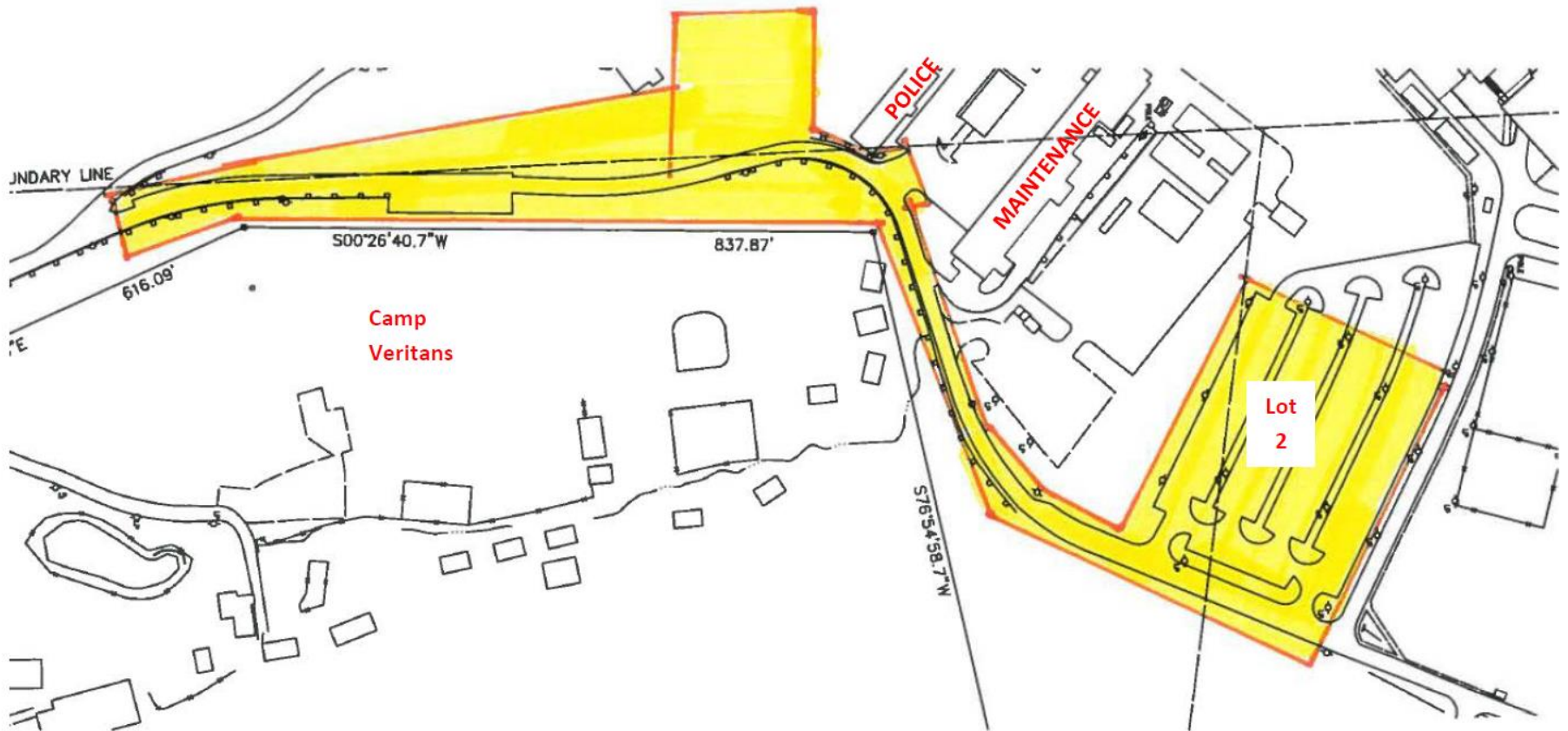


# Intersection at Police/Facilities





# Paving Scope East Road

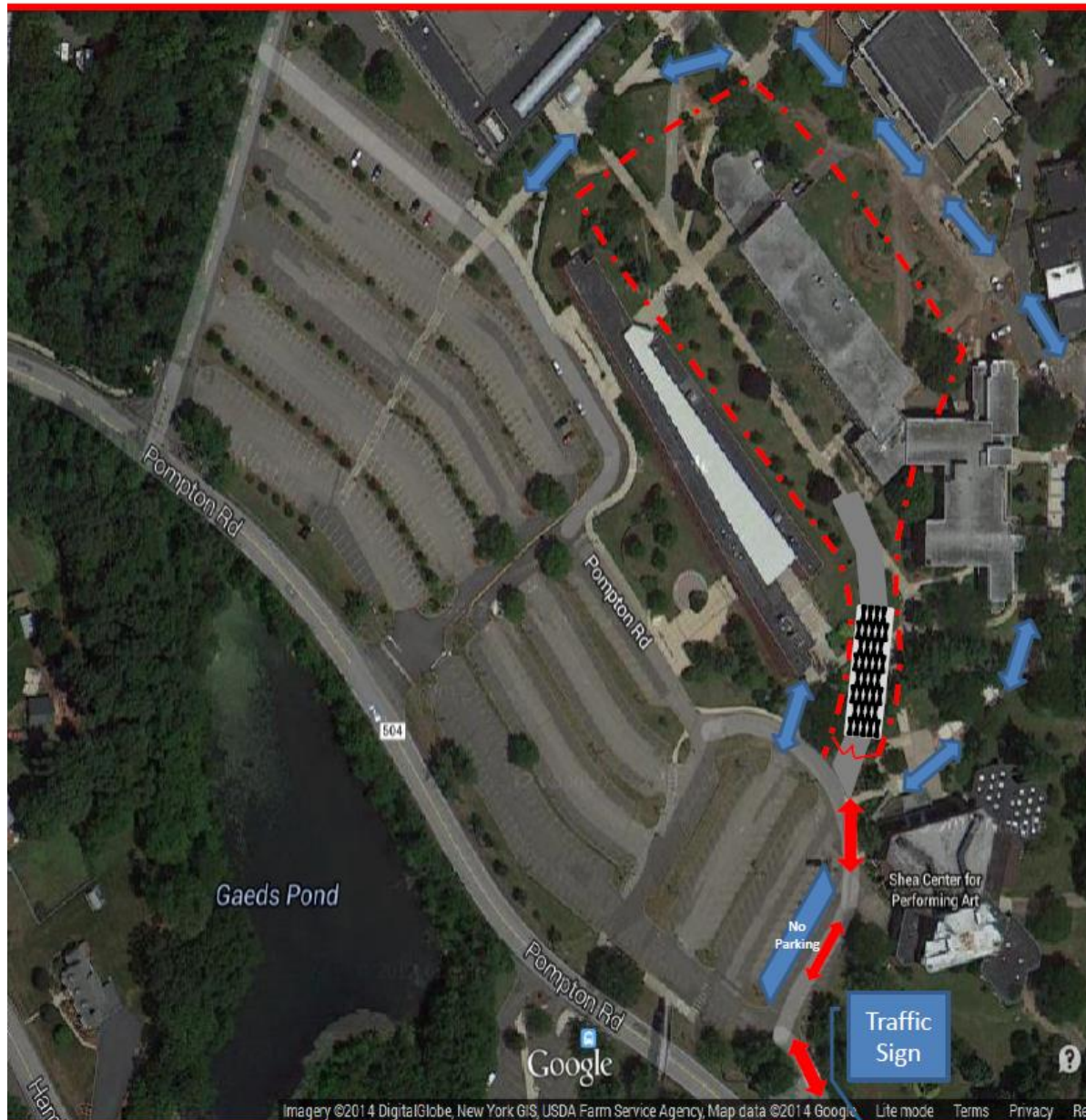


# Cost Estimate East Road/Lot 2






[illegible]



# Entry 3 Access to Site



## Legend:

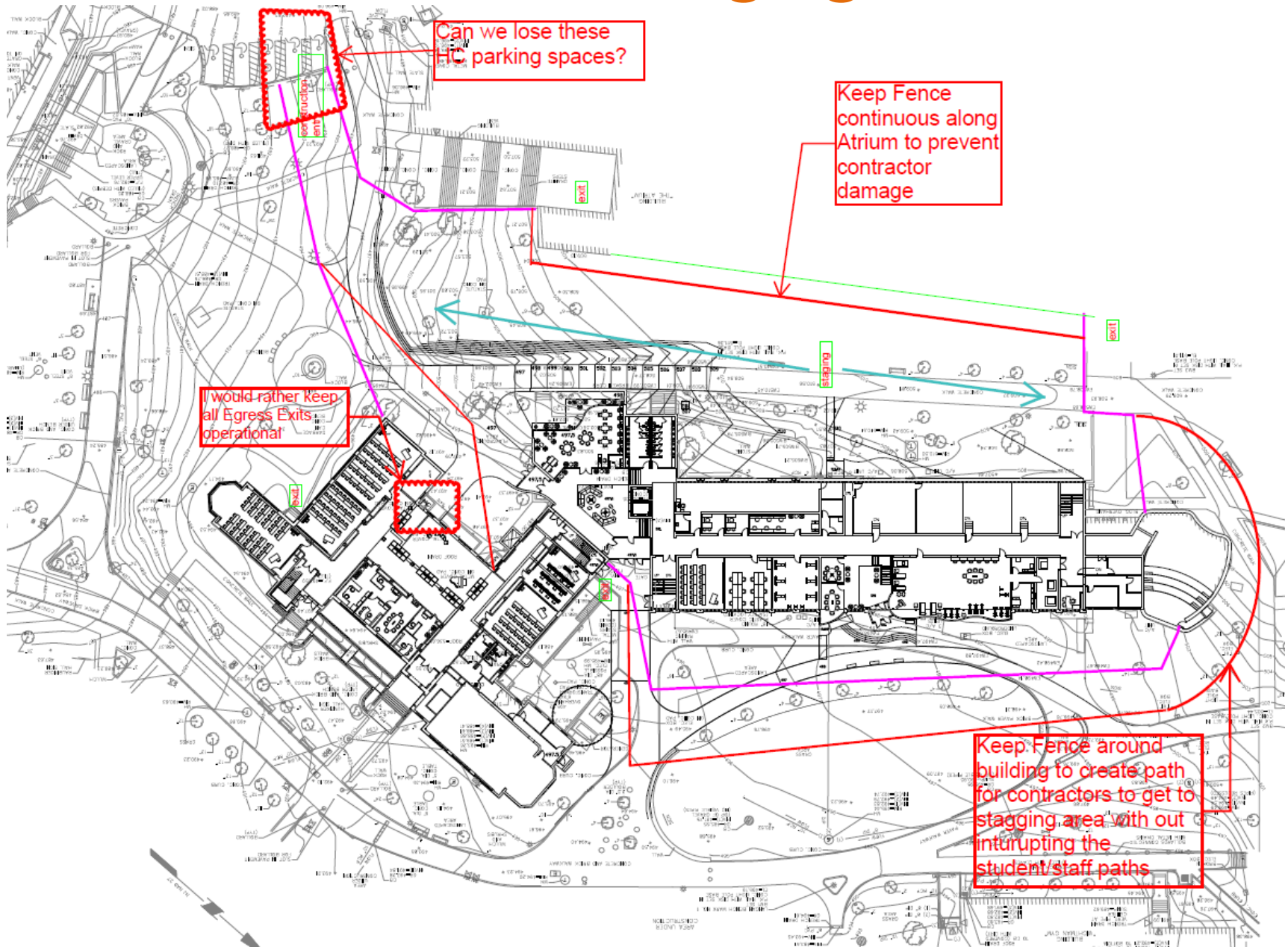
-  Site Fence
-  Student/ Staff Path
-  Construction Traffic
-  Tracking Pad
-  Construction Signage:  
Hunziker Deliveries only

**Site Logistic Plan For:**  
William Paterson University  
Hunziker Wing Renovations

Preliminary Logistics Plan 1A  
January 23, 2015

**Turner**

# Contractor Staging Plan

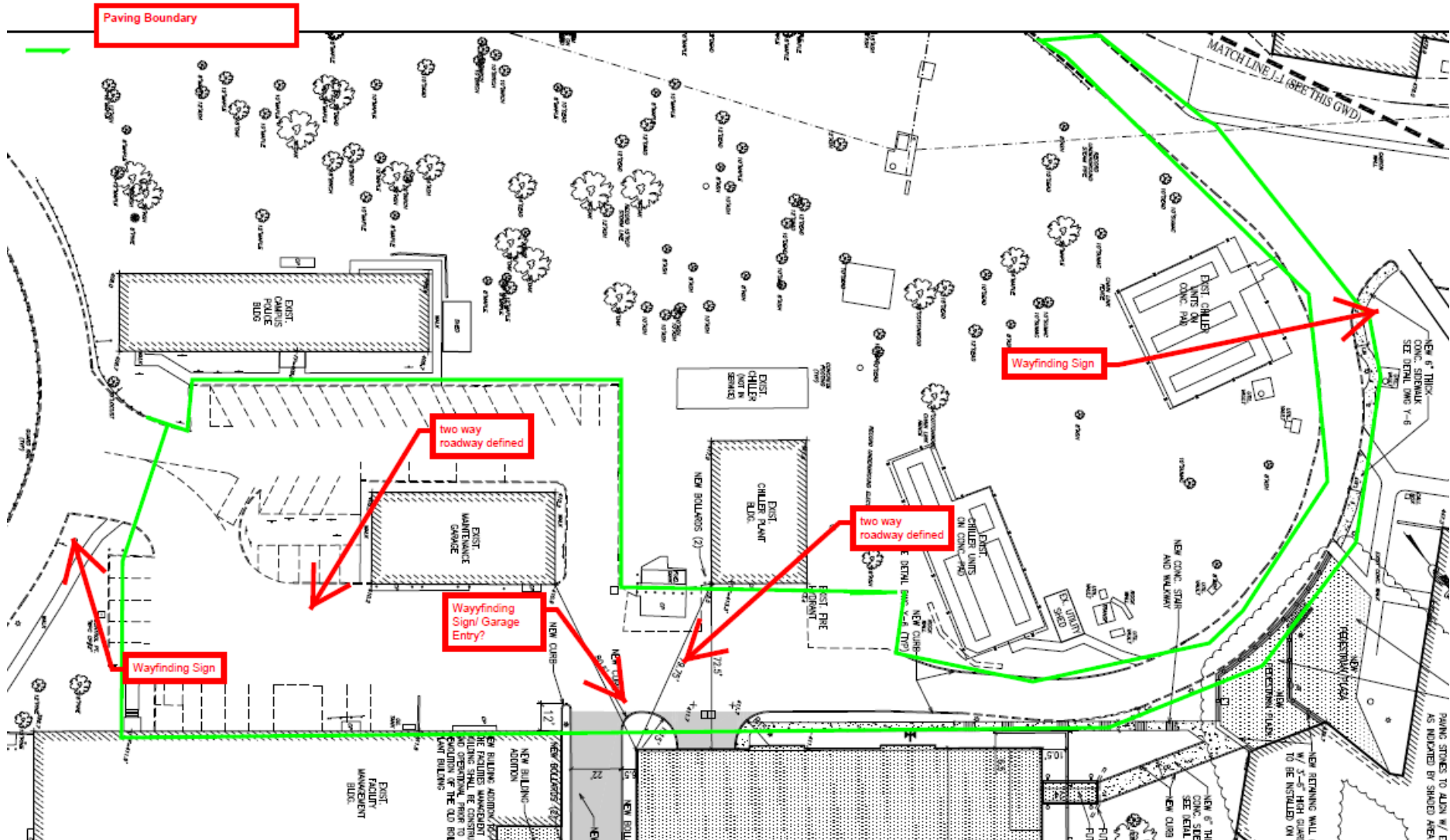




# NAB Wayfinding

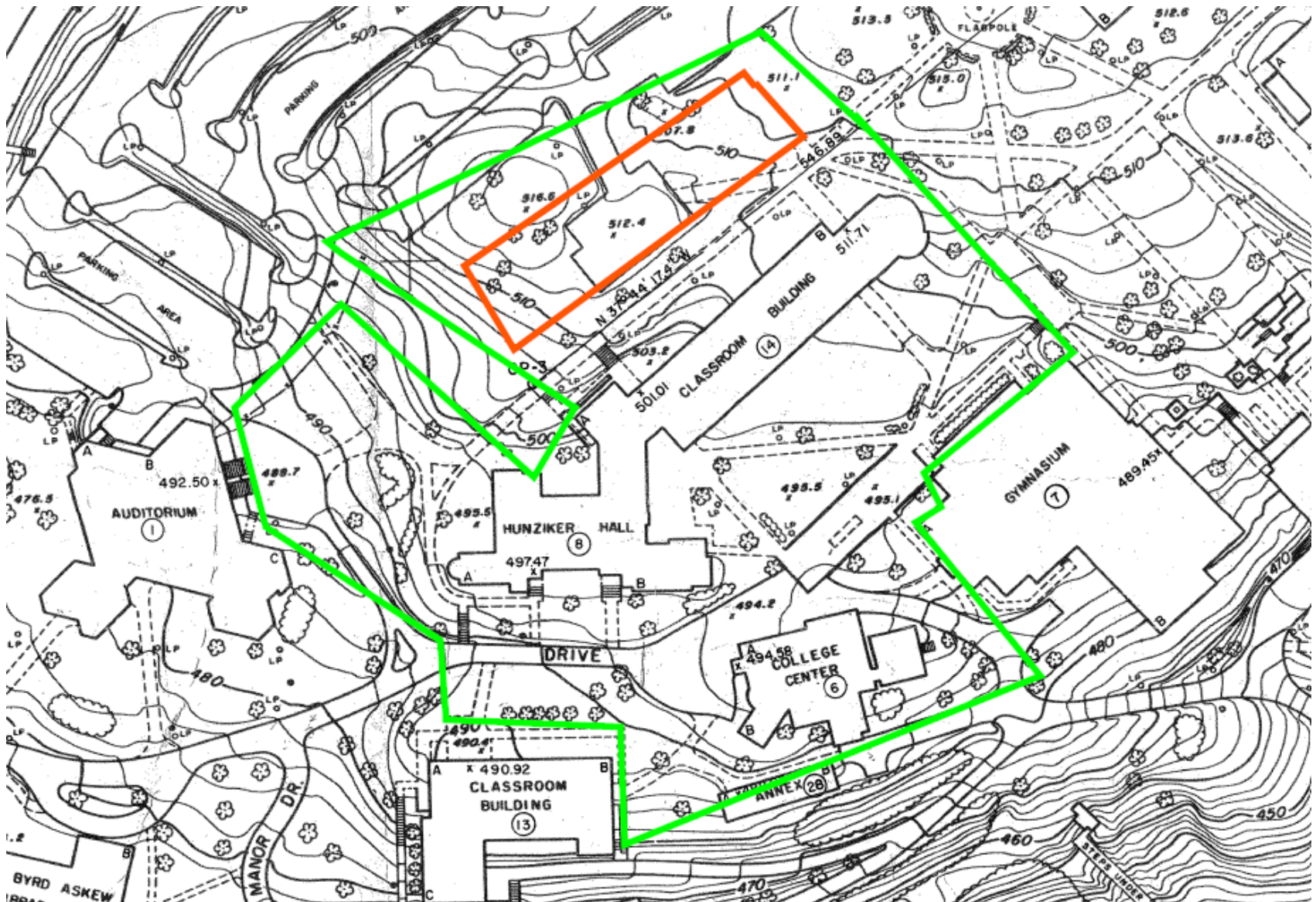


# Access to NAB





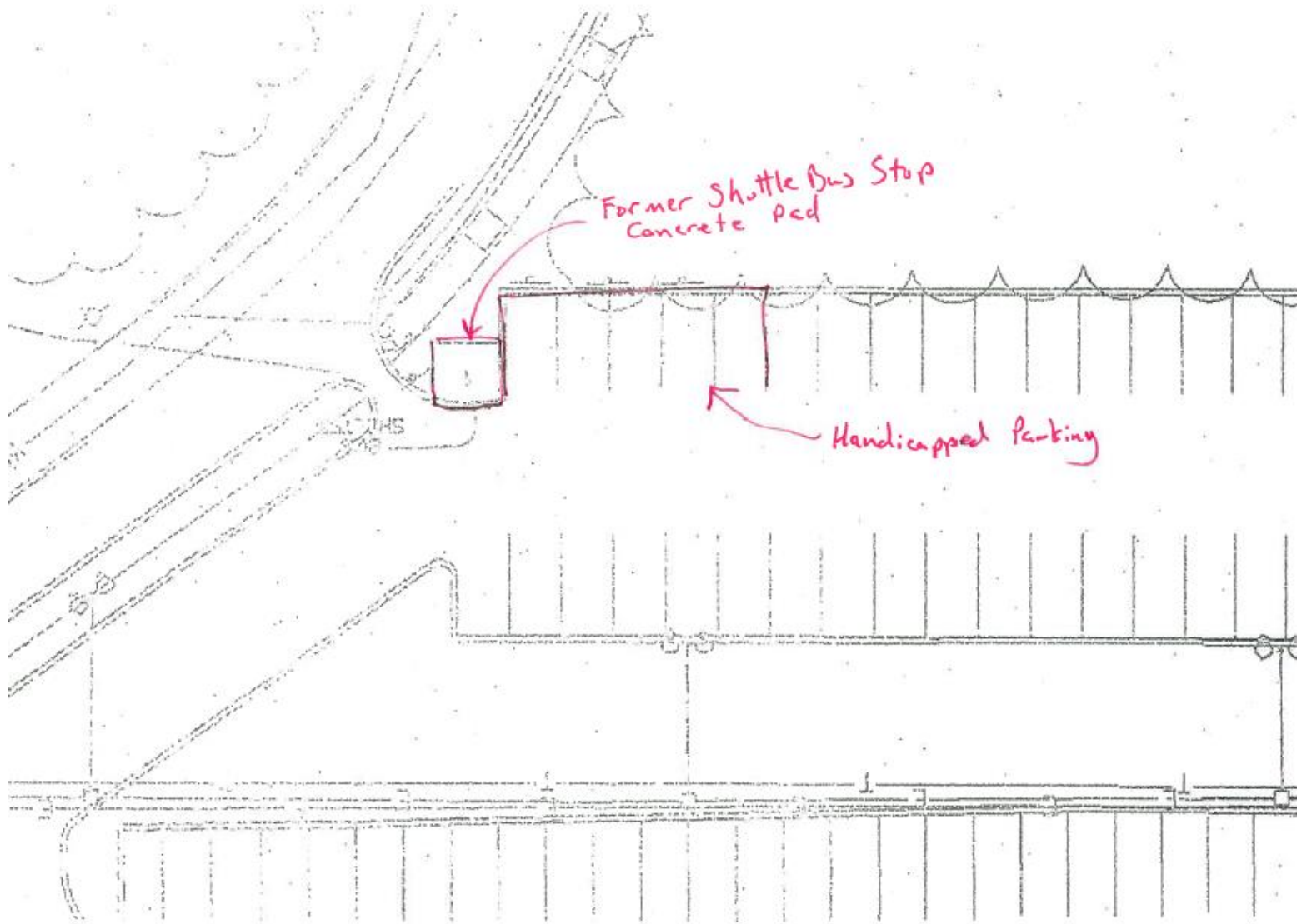
# Restricted Vehicle Use





# Shuttle Bus Lot 5





Former Shuttle Bus Stop  
Concrete Pad

Handicapped Parking