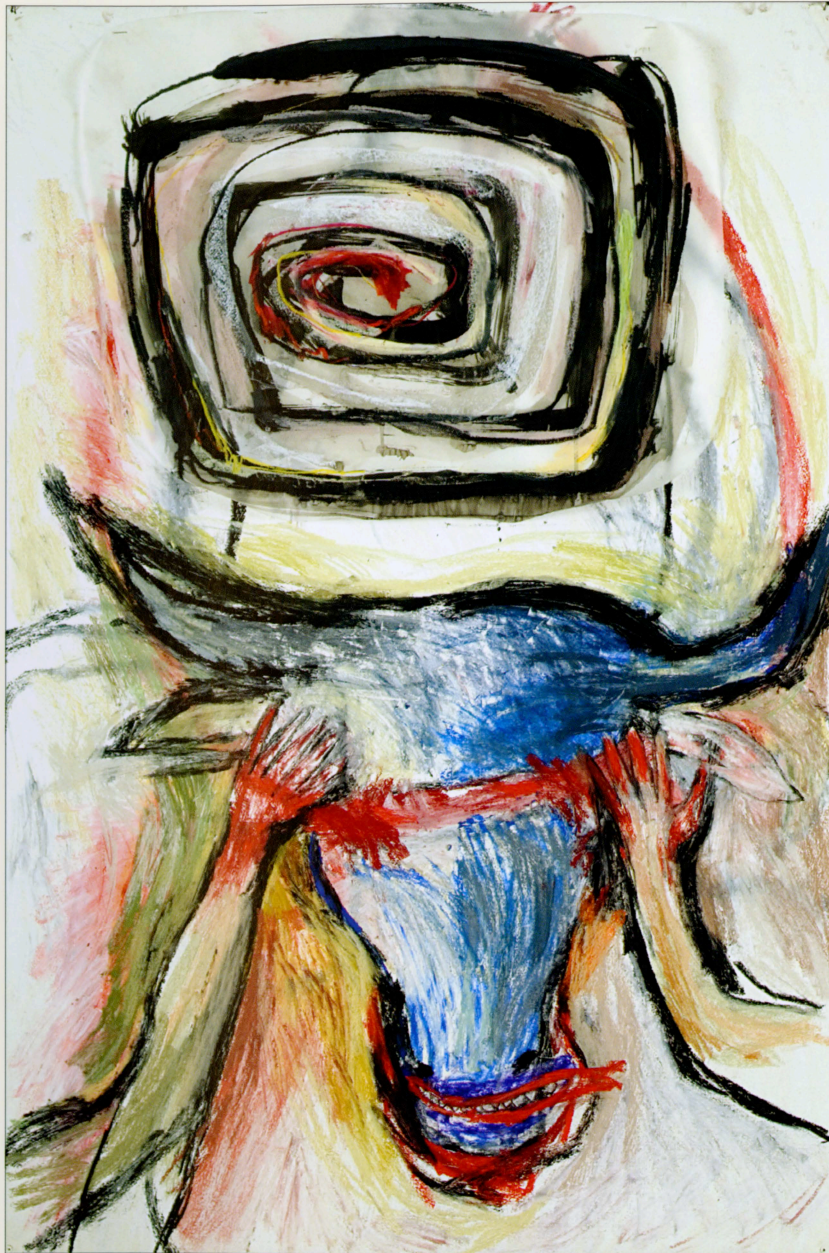


ALAINE BECKER

*"The way things are..."*





*Minos' Maze*, 2008, 47x31", pastel, oil pastel, ink and vellum on paper.

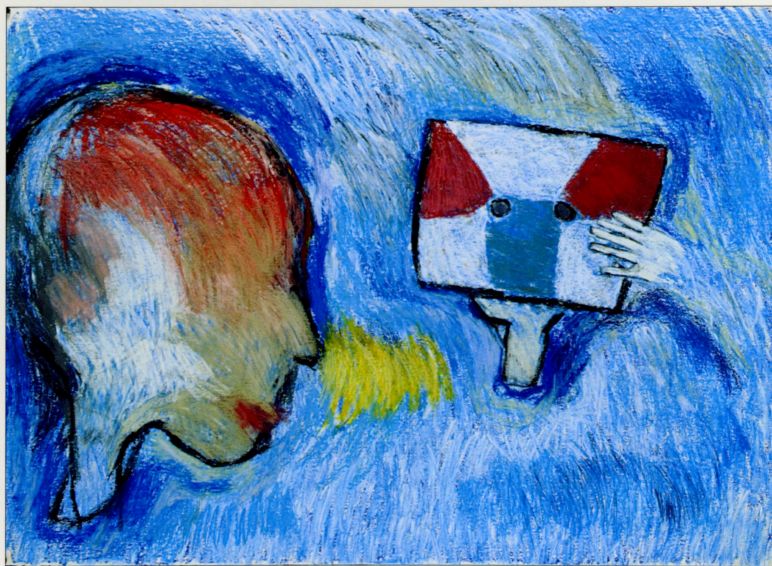
## Artist's Statement

The way things are, this is the way they have always been. Love, lust, betrayal, jealousy, heroism, honor, loyalty, stories of origin, the need for power and greed; these are all themes in Greek Mythology and traits that make us human. I wanted to explore these stories without being illustrative, knowledge of the individual myths is not important. The drawings have been stripped down to abstracted forms that suggest the essence of humanity as well as fundamental characteristics from the myths I am exploring. These drawings utilize a monumental scale to make the pieces appear larger than they actually are and strive to create a heroic quality that is consistent with the subject matter.





*Hydra*, 2009, 48x68", pastel and oil pastel on paper.

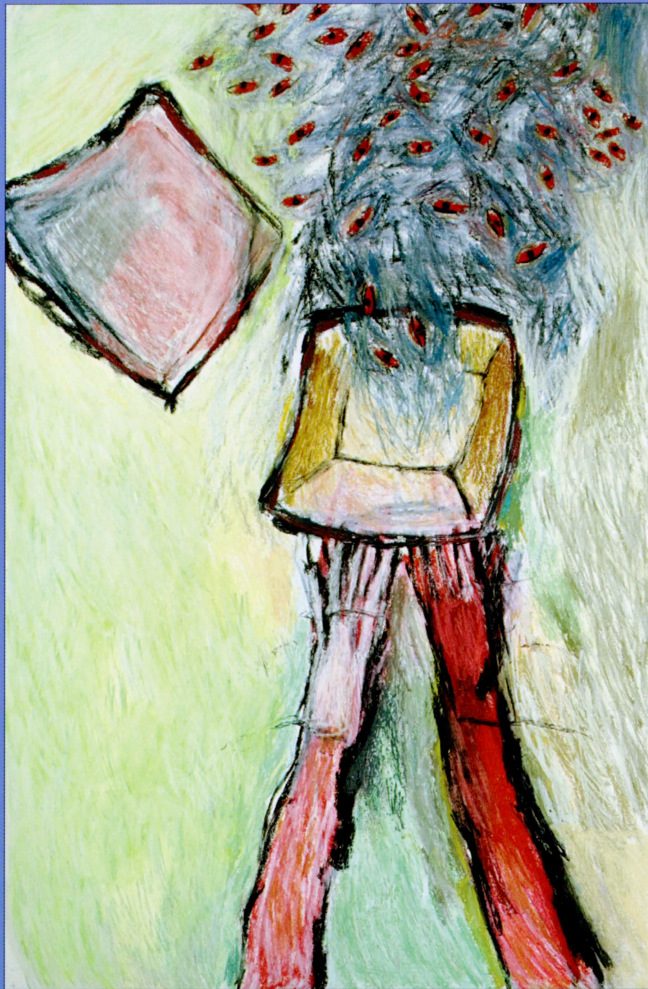


*The Bargain*, 2009, 40x55", pastel and oil pastel on paper.

## Artist's Biography

In 2008, Alaine Becker received a fellowship from the New Jersey State Council on the Arts for Works on Paper. In the same year she was awarded a grant from the Geraldine R. Dodge Foundation for a full month artist residency at the Vermont Studio Center. Becker has exhibited throughout New Jersey, including the Pierro Gallery, The New Jersey Center for Visual Arts, Montclair State University, and City Without Walls. She holds a BFA from SUNY, Purchase.





*Miss P's Box of Woe*, 2008, 47x31", pastel and oil pastel on paper.

FRONT COVER: *Communal Eye*, 2009, 56x45", pastel and oil pastel on paper.

WILLIAM  
PATERSON  
UNIVERSITY

university *Galleries*

BEN SHAHN CENTER  
300 POMPTON ROAD, WAYNE, 07470  
973.720.2654 Fax: 973.720.3290  
www.wpunj.edu  
NANCY EINREINHOFER, DIRECTOR

Design: Angela DeLaura



NEW JERSEY  
STATE COUNCIL  
ON THE ARTS  
www.njartscouncil.org  
This exhibition was made possible in  
part by a grant from the New Jersey  
State Council on the Arts,  
Department of State.

Discover  
JERSEY  
ARTS

