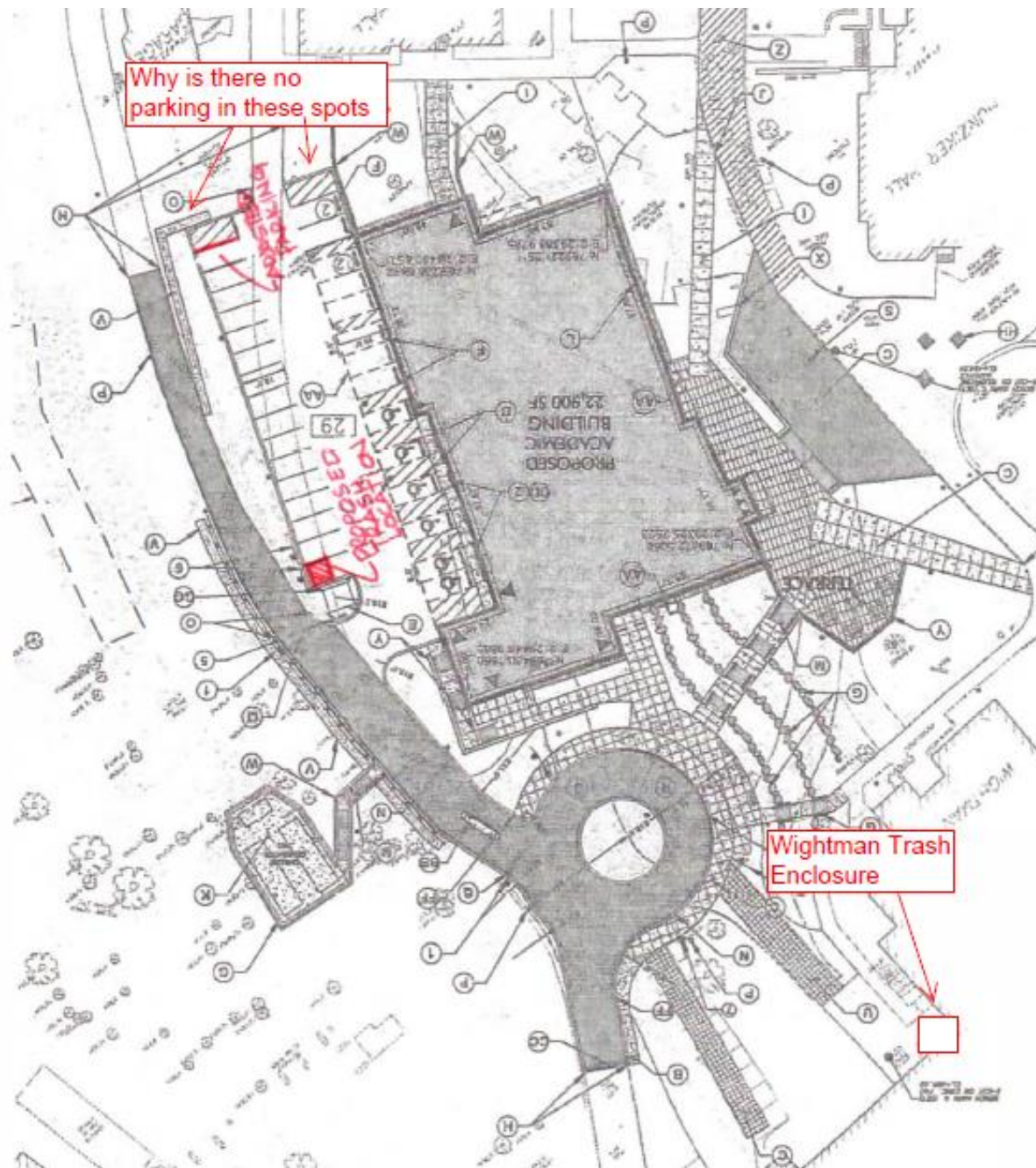


Parking Committee

October 2016

University Hall Trash Enclosure





BY OTHERS

dedicated gallery
spaces

hatched area to
remain

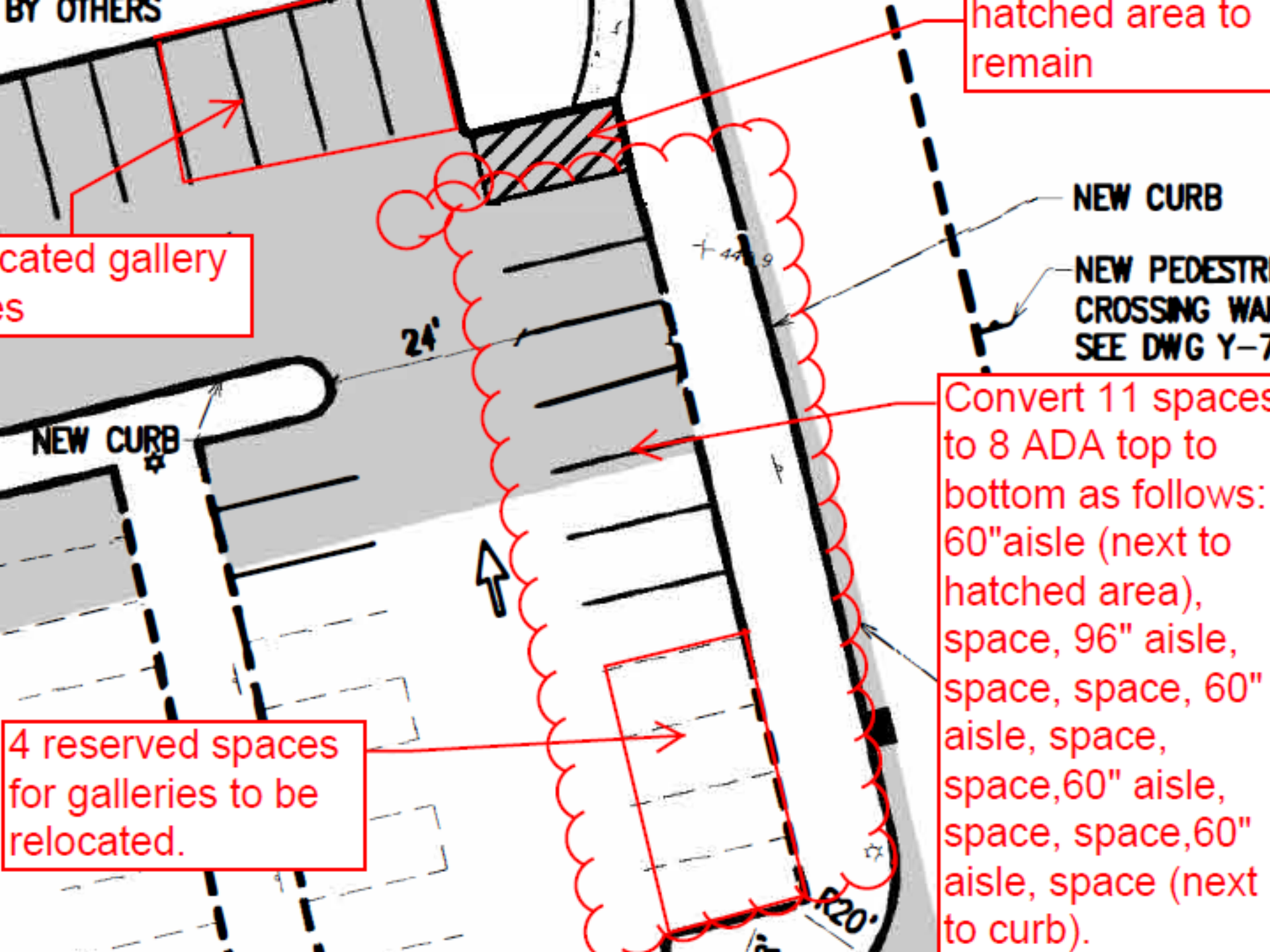
NEW CURB

NEW PEDESTRIAN
CROSSING WA
SEE DWG Y-7

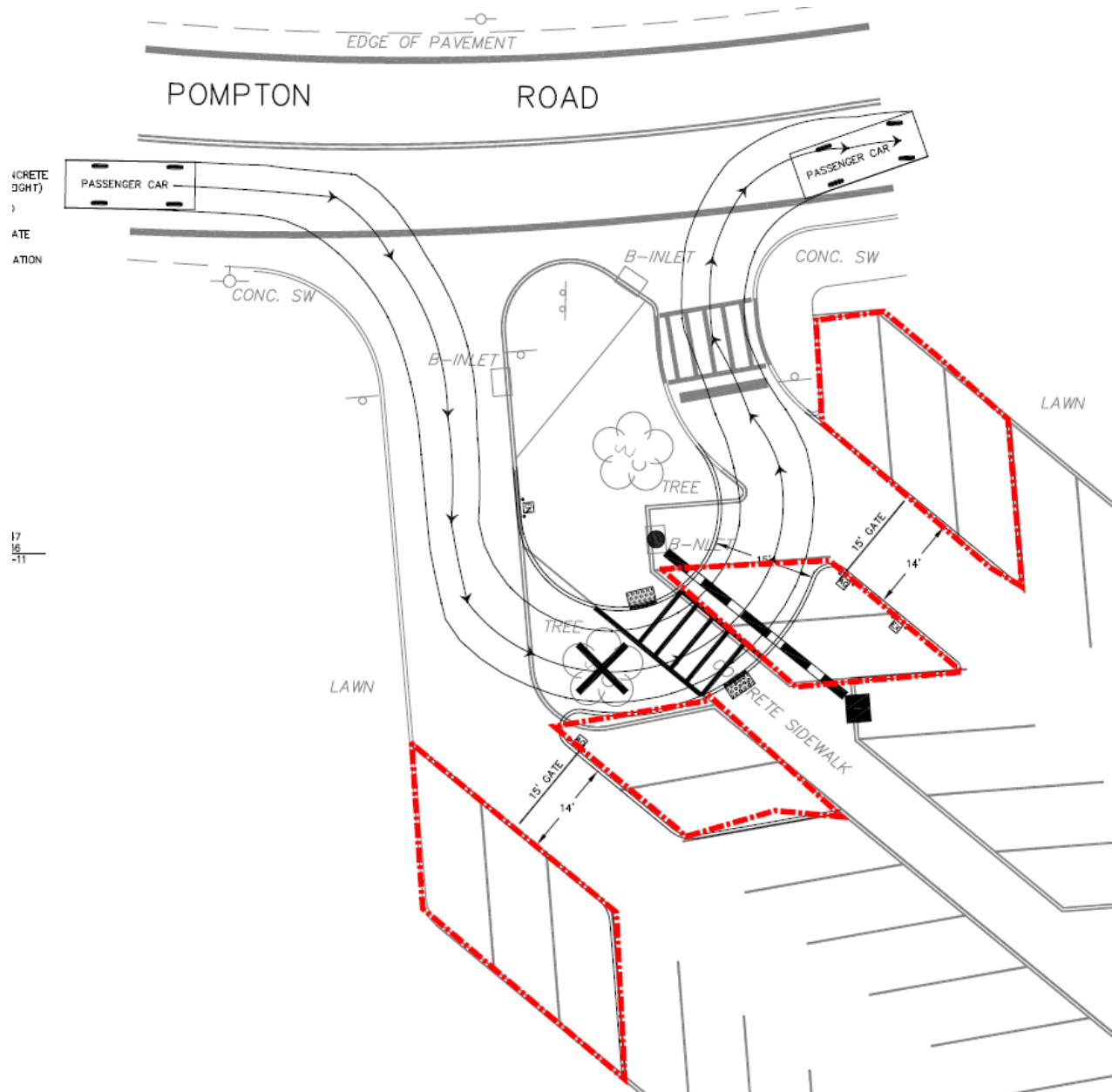
NEW CURB

Convert 11 spaces
to 8 ADA top to
bottom as follows:
60" aisle (next to
hatched area),
space, 96" aisle,
space, space, 60"
aisle, space,
space, 60" aisle,
space, space, 60"
aisle, space (next
to curb).

4 reserved spaces
for galleries to be
relocated.



Gate at Lot 8



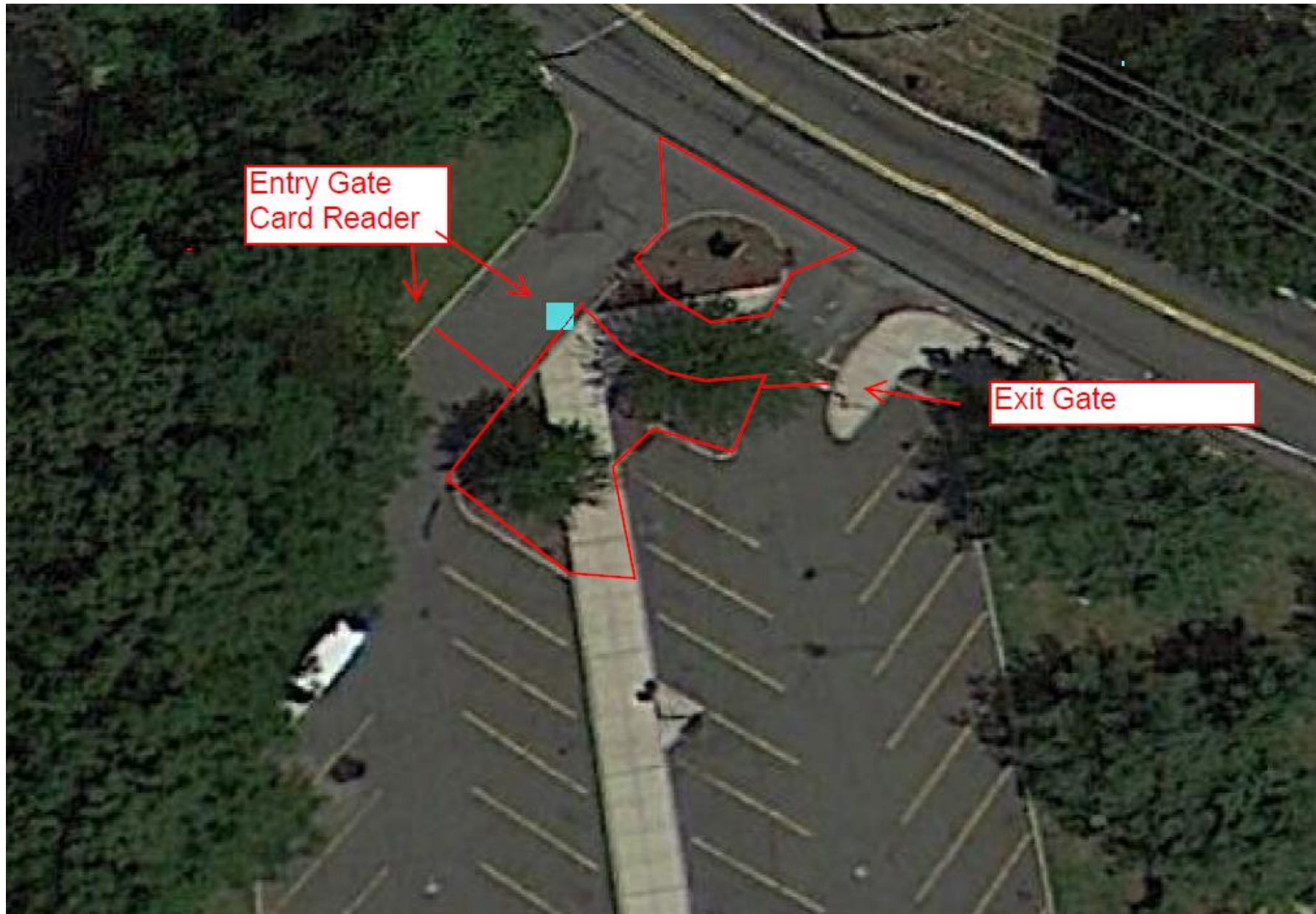
No Left Turn

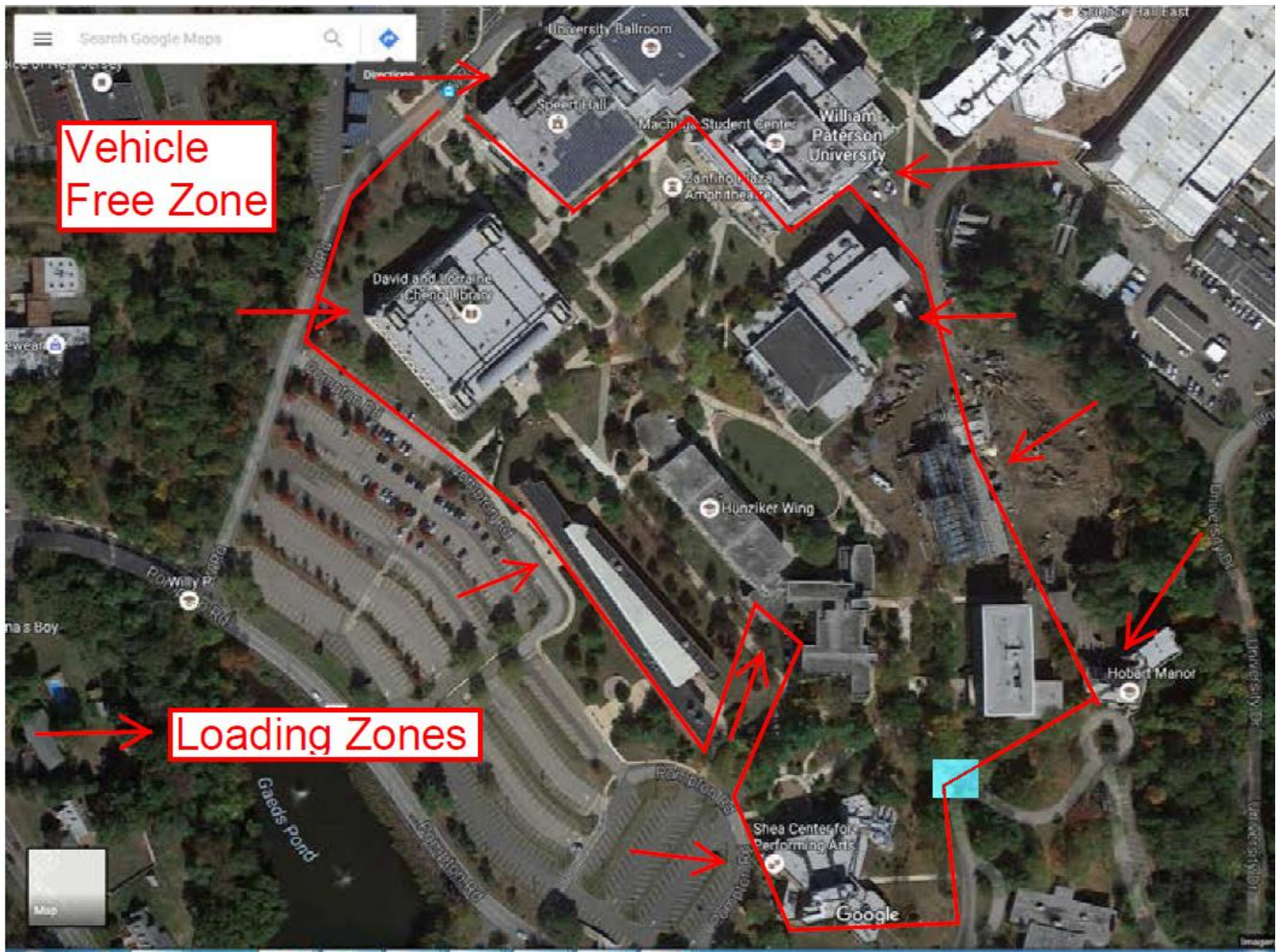


Cut Through



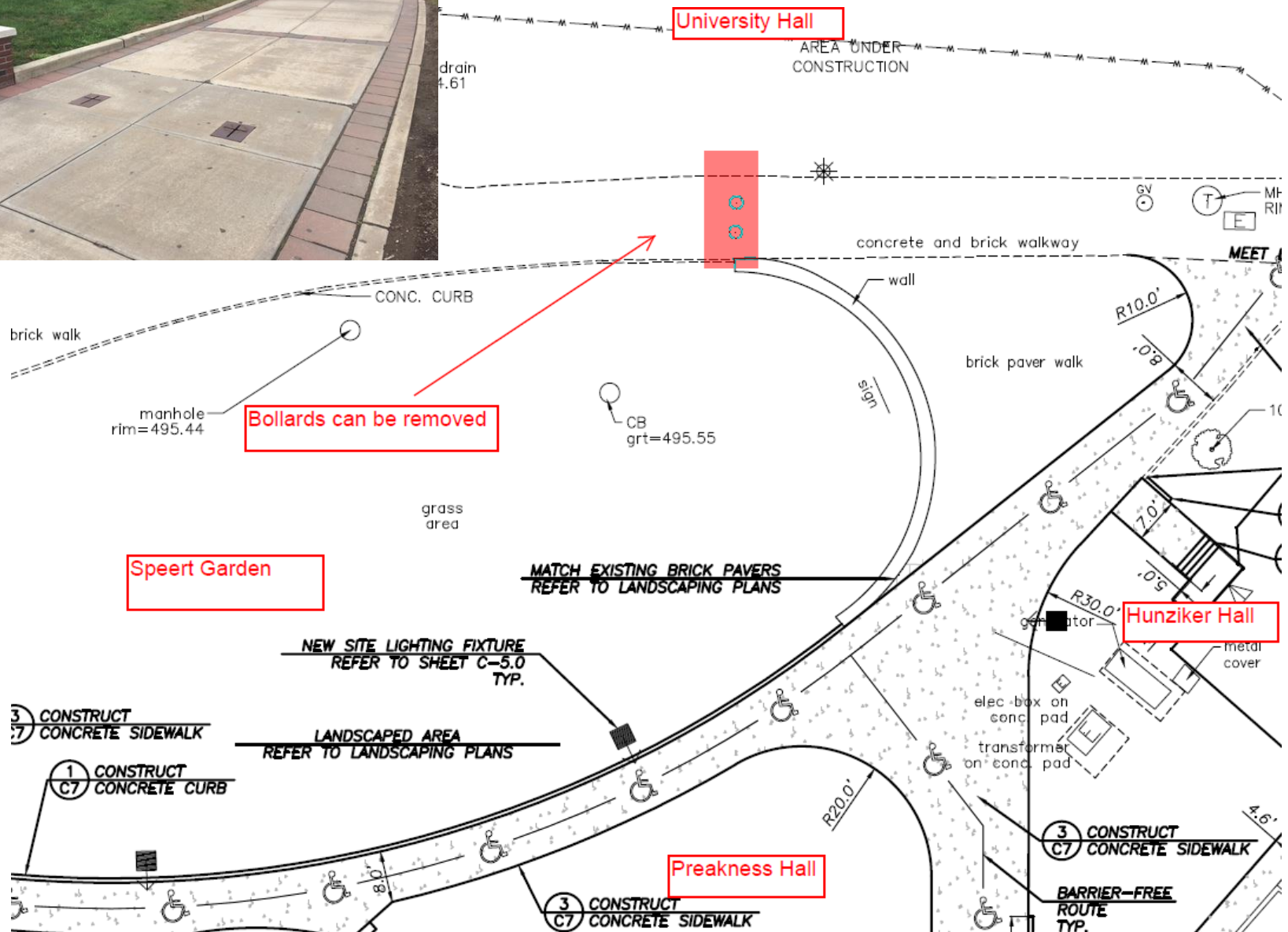
Lot 8 Hobart Hall







Speert Garden Bollards



Access Control?



Remove?

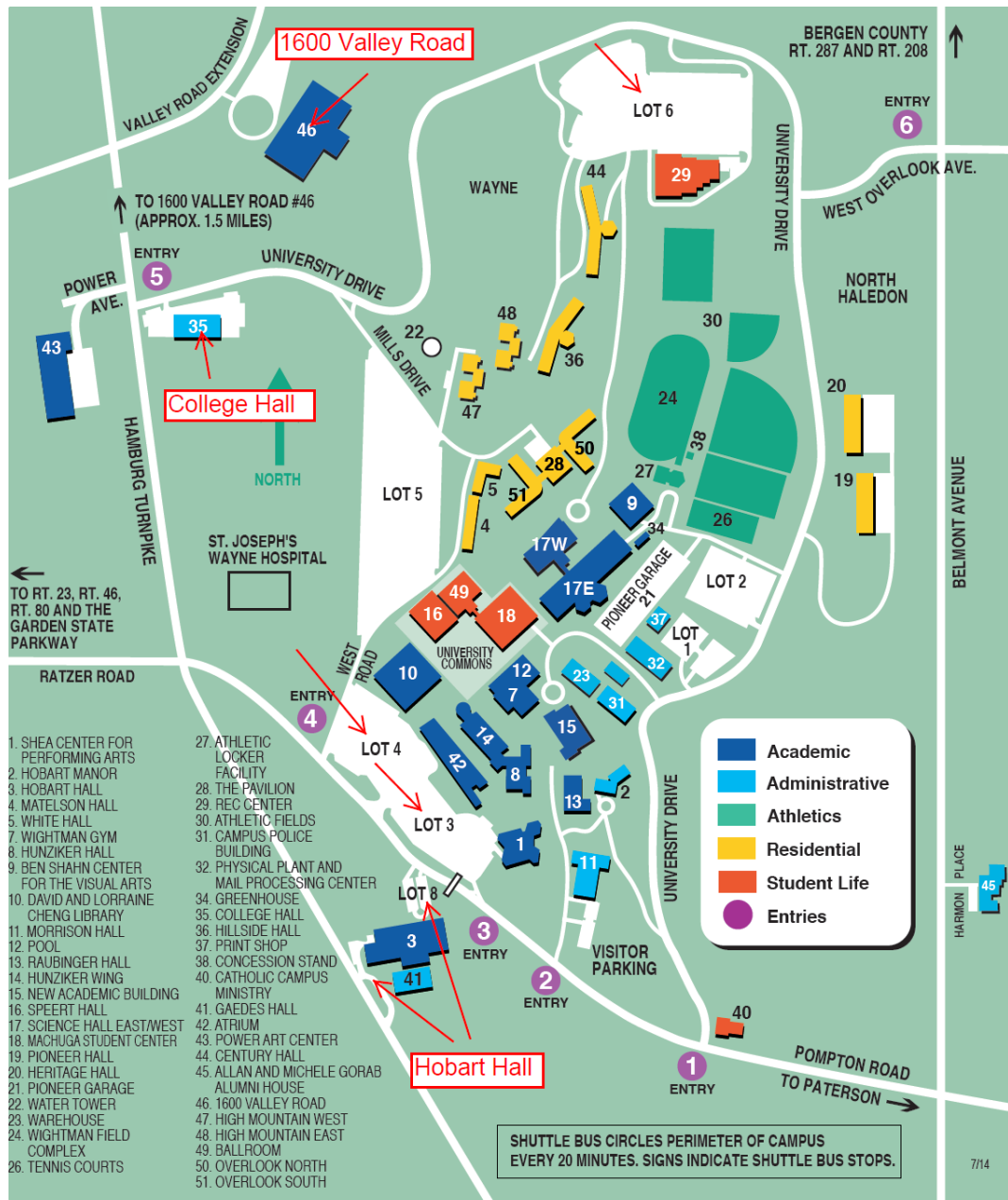


Shea Bollards



Atrium Removed





Exterior Lighting

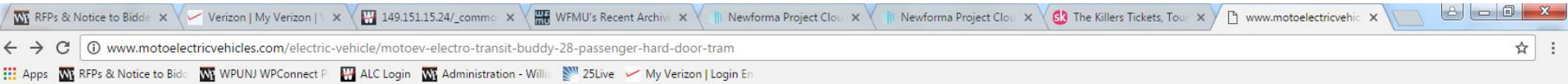
Lots 3,4 & 6
Hobart Hall
Valley Road
College Hall

Residence Hall Schematic Siteplan



SITE PLAN OPTION 1
1/16" = 1' - 0"

EV Shuttle Buses



Technical Specs



Model: MotoEV Electro Transit Buddy 28
Passenger Hard Door Tram

Product Code: ETB-28PHD

Passenger Capacity: 28 People

Vehicle Dimensions: 36.9' L X 5.0' W X 6.7' H

Gross Vehicle Weight: 11,050 Lbs

Speed: Up to 25 MPH

Range: Up to 25 miles (full capacity) *Option: 40-50 Miles Available (Add: \$2,555.00) *

Climb: 10% grade (full capacity)

Electric Motor: 9.0 KW AC Motor (12.1 Hp)

Min. Turning Radius: 18.0 FT

Maxload: 6,000 Lbs

Ground Clearance: 5"

Batteries: QTY 12- Trojan 105

Charger: Eagle On Board

Braking System: Rear & Front Hydraulic Brakes w/ Rear Mechanical Parking Brake

Suspension: Independent/ Rear Steel Plate Suspension

Drive: Rear Wheel Drive

Body: Steel Framework + Fiberglass

Roof: Fiberglass Painted to Match Vehicle

Floor: Non-Slip Plastic

Windshield: AS1 DOT Approved

Warranty: * 3 Year Limited Standard Warranty Included On This Unit!

get a quote

Moto Electric Vehicles offers a wide range of colors, not only the colors pictured on the website.

Gallery