

INSIDE THIS ISSUE:

New Applied Sociology Program 2

COE Research-Based Theses Honored 3

PPIA '08 Grad, Jane Hutnik Begins Career 4

Asst. Prof, M.Ed- Library Media, Michelle Kowalsky In Reality 4

Encyclopedia Of Social Problems Features Many WPU Faculty 5

Dr. Charley Flint Elected President of NJACJE 6

WPU Jazz Backs Clark Terry at Blue Note 6

Important Information 7

MFA PROGRAM RECEIVES NASAD ACCREDITATION

Michael Giorgio

The William Paterson University Department of Art can now officially and proudly consider itself among an elite group of only 277 institutions that are accredited through the National Association of Schools of Art and Design (NASAD). This recently acquired status has added a significant level of prestige to the department, making its programs ever more competitive for students well beyond the state of New Jersey seeking a comprehensive, yet vastly rewarding experience. Benefiting both the MFA Program, as well as a number of BFA and B.A. programs, the NASAD accreditation provides advanced exposure and access to a diverse and enriching array of concentrations in graphic design, computer art and animation, painting, printmaking, photography, sculpture/ceramics, and furniture design. Small class sizes are a signature attribute to all graduate level offerings at the University. However, this in tandem with the dual facilities of the Ben Shahn Center (which also houses the Ben Shahn Galleries, a space for internal as well as outside professional exhibitions) and the Power Art Center provides graduate students the opportunity to work in expansive, state-of-the-art studios where many are afforded their very own space in which to create!

According to Professors David



Visiting Artist-Painter, Freddy Rodríguez lectures a class of students.

Horton & Alan Lazarus (Former Associate Dean and Departmental Chair respectively), the entire process took a total of four years, and countless hours of research and preparation to complete in accordance with NASAD's extensive peer review process and self-study of the institution's programs, followed by an on-site review by visiting evaluators. Graduate Assistants, Matthew Rauscher and Marriot Sheldon (2009 MFA Candidates), along with additional students and the aforementioned faculty members, among others, spent painstaking hours cataloging and organizing archival, file and stored visual and documented materials into an immense array of exhibitiv, academic, and library examples of

work, achievements and mission objectives. Move On Meetings, faculty facilitated retreats, were held numerous times during the four year period, where all involved would convene to strategize and measure results. In evidence of their passionate and proactive nature, these gatherings were termed "move on meetings", being as the goal was to "move on" as opposed to "retreat". The materials were then scrutinized and adjudicated by NASAD representatives according to the association's strict and highly regulated guidelines. Although the department had prepared well for the challenge, and passed with flying colors on most aspects, a few minor details needed to be addressed before they would be awarded this highest seal of approval within the art and design community.

(continued on back cover)

NEW M.A. IN SOCIOLOGY APPLIES TO EVERYONE

"...employment for applied sociologists is expected to grow faster than the average for all occupations in the foreseeable future."

- Sociological Practice Association

Dr. Vincent Parrillo - Graduate Program Director, M.A. in Applied Sociology

The new M.A. degree in Applied Sociology is a highly practical program of studies for individuals in the private and public sectors who want to fast forward their careers. Its content is the result of input in focus groups from administrators in corporate and nonprofit settings who do the hiring and promoting. At these on-campus sessions, they informed the sociology faculty of the qualities and skills that they seek in master's degree students, especially an understanding of diverse cultures and intercultural communication, and the ability to utilize data analysis to conduct assessments and program evaluations.

Because applied diagnostic skills and applied knowledge about diversity in the workplace and society are of great value in virtually every occupational field, this master's program prepares students and gives them a competitive edge in a variety of professional settings. As demonstrated in the jobs/promotions secured by M.A. graduates in applied sociology at other universities across the nation, these areas include, but are not limited to, departments of human resources or research and planning

in banking, corporations, education, government, health care, insurance, marketing, as well as in community and other nonprofit organizations.

Among the many possible positions available, graduates in applied sociology work as planners, program development specialists, researchers, policy analysts, community outreach coordinators, data analysts, and human resource directors. Settings in which they typically work include corporations, research organizations, community agencies, government bureaus and programs, school systems, medical facilities, courts, and private businesses.

According to the Sociological Practice Association, employment for applied sociologists is expected to grow faster than the average for all occupations in the foreseeable future. This increasing demand results from concern about such issues as employee morale and retention of experienced professionals; organizational efficiency and effectiveness; and ways to enhance the organization's public image and increase market share. With a shortage of trained evaluators, job prospects are best for stu-

dents with an advanced degree in applied sociology that specifically equips them to take advantage of the trend toward research, evaluation, and data analysis.

The program highlights demographic changes and issues affecting metropolitan areas, providing the tools for mapping and measuring trends and for assessing their impact on communities, organizations and programs. As a result, this program provides students with the critical thinking and analytical abilities needed in today's ever-changing world.

The Master's in Applied Sociology is a 33-credit program in which a faculty advisor works closely with students to help them tailor a program of studies to suit their needs and interests, whether they be working professionals or students beginning their graduate studies immediately after earning their bachelor's degree. As part of their studies, students experience a supervised professional internship, either in their work setting or through placement, and complete a deliverable project applying the knowledge and skills they have learned.

To learn more details, write to **GRADSOC@wpunj.edu**

COLLEGE OF EDUCATION HOSTS RECEPTION TO HONOR OUTSTANDING ACTION-RESEARCH-BASED THESES

Dr. Rochelle Goldberg Kaplan - Graduate Program Director, M.Ed in Education-Teaching Children Mathematics; Chair, Ed. Leadership & Professional Studies

Each May, the College of Education hosts a Research Poster Presentation and Reception for all graduates of master's programs in the College who have completed their action-research-based master's theses. Graduates from January and May from all the M.Ed. programs are invited to present and attend the reception in their honor. They are joined by family guests, faculty, and peers to share and celebrate their outstanding scholarship accomplishments.

Almost all the graduates of the M.Ed. programs are full-time working teachers or other school personnel with home and family responsibilities. Still they manage to complete their coursework and produce a very fine thesis project involving assessment and change in their students and in their schools.

This year the poster session and reception were held on May 12th in the Valley Road Café. The posters I included research on problem



Presenters, Mark Buranicz & Tara Juliano

solving, engaging students in higher level thinking,, parent education, integrating technology into instruction, creativity, and more. As of April 25, the scheduled presenters were:

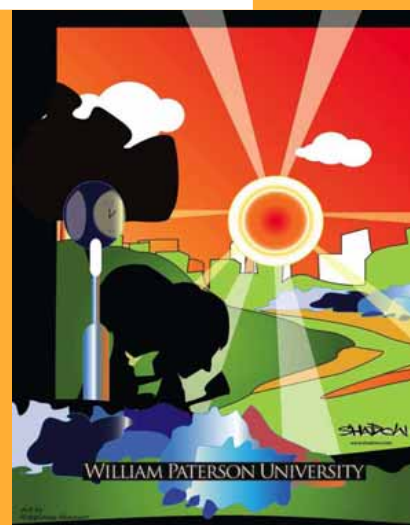
Janine Amoresano, M.Ed. in Reading
Mark Buranicz, M.Ed. in Education, Social Studies
Michelle Cromwell, M.Ed. in Reading
Diane E. Ceccacci, M.Ed. in Education, Early Childhood
Lynn Demetrakis, M.Ed. in Education, Teaching Children Mathematics
Paola Incitti, M.Ed. in Education, Bilingual/ESL

Kim Jordon, M.Ed. in Education,

Language Arts
Tara Juliano, M.Ed. in Education, Learning Technologies
Angel La Boy M.Ed. in Reading
Sara Lattavo, M.Ed. in Education, Language Arts
Kate Marcinowski, M.Ed. in Education, Language Arts
Anne Simone Marchetta, M.Ed. in Education, Early Childhood
Samantha Rinbrand, M.Ed. in Education, Learning Technologies
Heather Mascuch, M.Ed. in Education, Teaching Children Mathematics
Karolynn Predmore, M.Ed. in Education, Teaching Children Mathematics
Annette Romaniello, M.Ed. in Education, Teaching Children Mathematics
Aimee Silverstein, M.Ed. in Education, Social Studies
Dawn Temple, M.Ed. in Education, Teaching Children Mathematics
Rebecca Troodler, M.Ed. in Education, Teaching Children Mathematics
Christopher Yonitch, M.Ed. in Education, Social Studies

Recent MFA 2008 Graduate, Happiness Akaniro employed her education as a masters student in the Department of Art to create the cover design for this year's student planner, given out to all fall 2008 students! In

addition to ample space for taking notes, making lists, and organizing daily or weekly activities, the planner contains a multitude of helpful guides and campus information to help make the transition back to school ordered, structured, and slick!





Introducing
Jane Hutnik
Public Affairs Coordinator
for
Planned Parenthood
of
Metropolitan New Jersey

ship, strategic planning and governance. Jane also serves on the board of the United Nations Association - New Jersey Division.

Sharing the mission of Planned Parenthood in being pro-child, pro-family and pro-choice Jane looks forward to working with you in the future and sharing resources and information.

Jane can be contacted at 973-746-8797 x21; fax 973-746-0171; email jane.hutnik@ppfa.org; 29 North Fullerton Avenue, Montclair, NJ 07042.

Planned Parenthood of Metropolitan New Jersey, Inc. is one of the oldest Planned Parenthood affiliates in New Jersey and serves Essex, Hudson and Passaic Counties.

Dr. Sheila Collins - Graduate Program Director- M.A. Public Policy & Int'l Affairs

Before coming to PPMNJ, Jane was a Graduate Assistant for the Political Science Department at William Paterson University. Graduating in May with a Master of Art in Public Policy and International Affairs, Jane received the academic award of outstanding graduate student of the year for 2007. Her academic focus on com-

parative family policy and women and children's social justice was informed by her prior experience as Head Teacher for Early Head Start. Additionally, Jane served two terms as president of the Sussex County affiliate of the National Association for the Education of Young Children (NAEYC), currently serves as Vice-President of Organizational Development for the New Jersey affiliate of NAEYC overseeing, finance, member-



Asst. Prof. Michelle Kowalsky - M.Ed Library Media (in reality)

Michelle Kowalsky is completing her Ed.D. in Educational Technology at Pepperdine University. Her dissertation examined the efforts of librarians working in Second Life, an online virtual environment. Her study found that technology is a powerful professional development activity in librarianship around the world, which enables the natural collaboration of librarians to expand and develop across both

generations and geography. As libraries seek to connect users to the information they want and need, their presence online becomes increasingly important in order to reach users "where they are," which is often on the Internet.

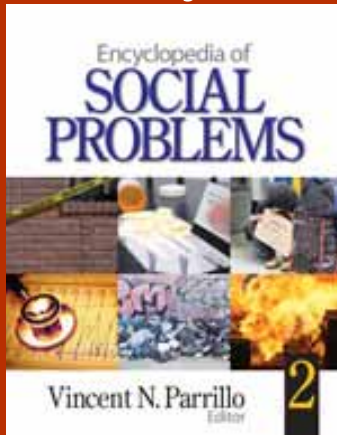
Kowalsky previously served as a reference librarian and curriculum materials librarian at WPU's Cheng Library since 1999, and has recently moved to the College of Education as assistant professor and coordinator of the graduate school library media programs at WPU. Michelle's expertise in libraries and technology enables her to train new librarians to carry out 21st Century information literacy efforts. These efforts help students and teachers to acquire technical, visual, and new media literacy skills, among others, and to prepare a workforce which is able to compete in an increasingly technological global economy.

Her research agenda includes topics such as online learning, video gaming in libraries, and teacher/librarian technology training. Her affiliations include the American Library Association (ALA), the NJ and American Associations of School Librarians (NJASL and AASL), the American Educational Research Association (AERA) and the American Society for Information Science and Technology (ASIST).



In virtual reality as a wii avatar

Faculty Achievements



Dr. Vincent N. Parrillo,
Professor of Sociology, and
Program Director, M.A. in
Applied Sociology

is the editor of a new two volume set of books published May 20, 2008 that offer an interdisciplinary perspective into a multitude of social issues of continuing concern on personal, local, regional, national, and global levels.

Over 600 entries by contributors from 17 countries, including a large number of WPU faculty, are represented in fields of 19 disciplines of science, communications, economics, education, health, history, languages, political science, psychology, and sociology. Entries cover major theories,

approaches, and contemporary issues in social problems and provide insight into how social conditions get defined as social problems, along with different ways people and organizations go about viewing and solving them.

The publication addresses problems considered fairly new, such as computer crimes and identity theft, to those that are centuries old, such as poverty and prostitution.

WPUNJ FACULTY WHO ARE CONTRIBUTING AUTHORS TO THE ENCYCLOPEDIA OF SOCIAL PROBLEMS (Total number: 55)

Vincent Parrillo, Sociology, General Editor, and author of "Dillingham Flaw," "Misuse of Psychoactive Drugs," "Multiculturalism," "Redlining," "Social Distance," and "Undocumented Immigrants"

Liana Allen, Sociology adjunct, "Judicial Discretion"
Giuliana Campanelli Andreopoulos, Economics & Finance, co-author of "Multinational Corporations"
Maboud Ansari, Sociology, "Islam and Modernity"
John Asimakopoulos, Sociology adjunct, "Deviance," "Social Stratification"
Mary Pat Baumgartner, Sociology, "Moral Entrepreneur"
Richard Blonna, Community Health, "STDs," "Stressors"
Margaret Chelnik, Sociology Adjunct, "Widowhood"
Katherine Chen, Sociology, "Bureaucracy," "Oligarchy"
Sheila Collins, Political Science, "Poverty"
William Curcio, Sociology adjunct, "Means-Tested Programs"
Mark Ellis, Sociology, "Cultural Diffusion" and "Cultural Lag"
Charley Flint, Sociology, "Prisons, Pregnancy and Parenting"
Gennifer Furst, Sociology, "Crime

and Drug Abuse"
Peter Griswold, Special Education, "Special Needs Children"
Robert Harris, IRT, "Cyberspace," "Digital Divide"
Thomas Heinzen, Psychology, "Group Think," "Hierarchy of Needs," "Neuroses"
Diana Judd, Political Science, "Religious Extremism"
Keumil Kim Yoon, Languages and Culture
Jennifer Kolesar, Sociology adjunct, "Human Rights," "Self-Fulfilling Prophecy," "Stereotyping"
Kathleen Korgen, Sociology, "Biracial"
Danielle Liautaud-Wakins, Graduate Admission and Sociology, "3 Strikes Law"
Howard Lune, Sociology, "Drug Subcultures"
Emily Mahon, Sociology, "Civil Religion"
James Mahon, Sociology, "Religion and Conflict"
Mark Major, Political Science adjunct, "Public Opinion"
Rosanne Martorella, Sociology, "Medical Malpractice," "Smoking"
Lawrence Mbogoni, AACCS, "Miscegenation"
Sarah Murray, Sociology adjunct, "Blended Family"
Balmurli Natrajan, Anthropology, "Cultural Values"
Michelle L. Neumyer, Sociology adjunct, "Pink-Collar Occupations"
Gabriel Okafor, Sociology adjunct, "Fundamentalism"
Thomas Owusu, Geography, "Transnational Families"
Eugene Packer, Psychology adjunct, "Terrorism and Torture"

Behnaz Pakizegi, Psychology, "Child Neglect"
Alexandros Panayides, Economics and Finance, co-author of "Multinational Corporations"
Richard Pardi, Environmental Science, "Sewage Disposal," "Non-Renewable Resources"
Keumjae Park, Sociology, "Gender Identity and Socialization"
Michael Principe, Political Science, "Political Action Committees"
Enrique Pumar, Sociology, "Economic Development"
Myra Robinson, Sociology adjunct, "Foster Children"
Julia Rosenthal, Elem/Early Childhood Education, "Ability Grouping"
Arlene Scala, Women's Studies, "Sexism"
Gladys Scott, Languages and Cultures, "ESL"
Michael Sebetich, Biology, "Ecosystem"
Stephen Shalom, Political Science, "Affirmative Action," "Gerrymandering"
Cynthia Simon, Political Science, "Special Interest Groups"
Peter Stein, Sociology, "Dual-Income Couples"
Karen Swanson, Environmental Studies, "Acid Rain," "Water Quality"
Paul Swanson, Economics, "Capital Flight," "Child Labor," "Deregulation," "Outsourcing"
Susanna Tardi, Sociology, "Ethnomethodology"
Cheray Teeple, Sociology, "Extended Family" and "Nuclear Family"
Maria Villar, Anthropology, "Values"
Miryam Wahrman, Biology, "Bioethics"
Yvonne Chilik Wollenberg, Political Science adjunct "Countermovements"

Dr. Charley Flint Elected As First African-American President Of NJACJE

Michael Giorgio

Dr. Charley Flint, Professor of Sociology, Coordinator of Criminal Justice, and former Program Director for the M.A. in Sociology has been elected as president of the New Jersey Association of Criminal Justice Educators (NJACJE). She is the first African-American to be elected to this position.

Marking its 40th anniversary this year, the NJACJE began in an effort towards building a structured foundation with which to enhance the quality of undergraduate and graduate education for academicians in criminal justice and related fields. The organization was established during the early years of the Law Enforcement Assistance Administration (LEAA) as the Council of Educational Institutions for Law Enforcement (CEILE). One of the organizational goals was to function as a liaison between the New Jersey Division of Criminal Justice (the major funding agency in the state for LEAA), and the many Police Science Programs that were quickly expanding throughout a

number of institutions. The organization exists, among other efforts, in its present form to:

- Enhance the quality of programs and encourage innovation in the field.
- Recommend standards for educational programs in the field
- Provide public education regarding the criminal justice system.

Dr. Flint had previously held the positions of Vice President and Treasurer, as well as Chair of the Student Affairs Committee within the NJACJE. Already considered a preeminent criminal justice sociologist in New Jersey for many years, she is anxious to utilize this expertise in tandem with her newly held office to further develop and strengthen the educational model for her and many colleagues throughout New Jersey. Although small in size, state issues related to criminal justice are substantial and ever changing; therefore, the task at hand presents a multitude of challenges. However, this professor brings a twenty four year history of education in the area of Sociology at William

Paterson University, in addition to her in-demand work throughout New Jersey as a criminal justice expert. The wealth of knowledge and experience, theoretical and practical, that Dr. Flint has already brought to the academic and governmental realms in the study and application of criminal justice is well served to provide what can only be considered a new beginning. Throughout the next phase of NJACJE activities, it is expected that a greater comprehension in educating people on how our federal and state judicial systems function on a sociological level, from the standpoint of the individual, as well as the group, will become further evident.

Dr. Flint teaches multiple courses on the undergraduate and graduate levels, and is currently designing a proposal for introduction of a dedicated masters program in criminal justice studies that will possibly be offered in future semesters.

Membership in the NJACJE is open to full-time and part-time faculty, representatives of Criminal Justice agencies, and students.
www.NJACJE.org

WPU JAZZ BACKS LEGEND CLARK TERRY AT THE BLUE NOTE IN THE BIG CITY!



A number of William Paterson University jazz students and faculty performed with jazz master Clark Terry as members of the Clark Terry Big Band during the band's performances at New York's legendary Blue Note jazz club during the spring 2008 semester. Pictured at the Blue Note stage are (from left to right): Mrs. Gwen Terry, **Whitney Slaten** (a senior

music major), **David Demsey**, coordinator of jazz studies, **Cameron Mac Manus**, M.M. '05, **Clark Terry**, **Marcus McLaurine**, an adjunct faculty member, **Shawn Baltazor** '06, **Roxy Coss** '08, and **Brain McCarthy**, M.M. '07. Also performing, but not pictured was adjunct faculty member **David Rogers**.

Some Important Dates & Deadlines Ahead...

Oct. 1 - Last day to apply for January 2009 Graduation & to file for Comprehensive Exams.

Oct. 7 - Last day to apply for 50% refund for course withdrawal.

Oct. 19 - Graduate Open House - University Commons (Ballrooms A-C) 1:00-3:00 p.m.

Oct. 21 - Last day to academically withdraw from a fall 2008 course (no refund)

Oct. 28 - Graduate School Preparatory Workshop - Valley Road Rm. 1019 (Satellite Graduate Office) - 5:00-6:30 p.m.

Nov. 20 - Last day to apply for a Leave of Absence.

Nov. 20 - Graduate School Preparatory Workshop - Raubinger Hall 139 (Graduate Admissions Office) - 12:30 p.m.-1:30 p.m.

Dec. 11 - Last day to withdraw from the University.

December 21 - Winter Break Begins



"Blurry"
Kwadwo Abrah -
MFA '10

First You Need to Complete The Form...

Application for Graduation - ALL students must complete this form in order to fulfill their graduation requirements at the conclusion of a given program. Applications are due three times per year: Feb. 1 for May, June 1 for August and Oct. 1 for January.

Comprehensive Exam Application— Prior to graduation, many programs require either a comprehensive exam, thesis, recital, etc. as part of the exit requirements. All students in programs that have such requirements must submit this application to the Office of Graduate Admissions in accordance with the

deadlines of March 1 for the spring requirement/exam and Oct. 1 for the fall requirement/exam.

Change of Program Concentration Form -

This form is used by students to apply for a change of concentration within their program of study. For example: MA-English-Literature to MA-English-Writing. This form is submitted to the Office of Graduate Admissions.

Leave of Absence & Withdrawal Forms -

Students may apply for a leave of absence for one semester. Requests for two consecutive semesters (fall/spring) are subject to

approval. Withdrawals are processed according to the guidelines stated in the Graduate Student Handbook.

In the event a student wishes to drop their only remaining course for a given semester, thereby bringing them to zero credits, a Leave of Absence Form must be completed. This action will automatically drop the course.

Both forms may be found online at the graduate admissions page or in the Office of Graduate Admissions. **Completed forms must be sent directly to the Registrar.**



"Vanity"
Tami Crupi -
MFA '10



"Jazz"
Matthew Rauscher -
MFA '09

MFA PROGRAM (CONT'D)

Nonetheless, in October 2007, the William Paterson University Department of Art had finally and officially reaped the benefits of seeming endless amounts of paint, clay, wood, metal, paper, dirty hands, dusty faces, sore muscles and tired eyes..... Achieving recognition for that which it is said in the art world only comes after the creator has long since expired! Contrary to history, this department and its artists have only just begun a new period in their collective process to craft the future.

Are you, or is someone you know, interested in being part of the next phase of art and

design at William Paterson University? The MFA Program offers concentrations in fine arts, design arts, or media arts; with courses in printmaking, photography, drawing, painting, sculpture, computer art and

animation, fibers, ceramics, foundry, graphic design, and furniture design. It is structured as a professional degree for the fine artist, craftsperson, designer or media artist, or for those wishing to teach at the college or university level. The deadline for fall applications is April 1st. Further information may be found at <http://ww2.wpunj.edu/graduate/Programs/Art.cfm> You may also contact the MFA Office at gradart@wpunj.edu or 973-720-3284.



(l-r) Marriot Sheldon,
Matthew Rauscher,
Prof. David Horton



Comments-Questions-Submissions:

Michael Giorgio, Editor
The Graduate Advance
Office of Graduate Admissions & Enrollment Services
Raubinger Hall 139
300 Pompton Road
Wayne, NJ 07470

Phone: 973-720-2506

Fax: 973-720-2035

E-mail: giorgiom@wpunj.edu

You Would Make A Great Story!

We take an avid interest in what our students are doing, academically and outside the classroom. Upcoming issues of The Graduate Advance will be both informational and story orientated, and we would love to include you as a feature! You may submit an entire story or press release, or simply tell us the basics: who, what, when, where, why.... and we'll write it for you! Oh, and a picture or two will only serve to showcase you in the best light! (as long as the photo is well lit!)

Are you working on something noteworthy personally or professionally that utilizes your WPU coursework? Have an inspiring tale to tell about how something personal influenced you

professionally? Or maybe you want to share with others what your experience as a graduate student at William Paterson University has been like for you?

This newsletter is shaped by those who participate; and, with few exceptions, is essentially "without walls" regarding content. Therefore, be creative, and we will do our best to include your submissions as space allows.

Issues of The Graduate Advance are

published three times yearly; two times per fall, and once per spring semester.

Deadlines are the last Fridays in May and October.

Submissions may be sent to Michael Giorgio at: William Paterson University, Office of Graduate Admissions, Raubinger Hall 139, 300 Pompton Road, Wayne, NJ 07470 You may also submit by email: giorgiom@wpunj.edu or fax: 973-720-2036

"Ball Cabinet"
Izabela Rodzen -
MFA '10



"Bedroom Window"
Jamie Cannon -
MFA '10