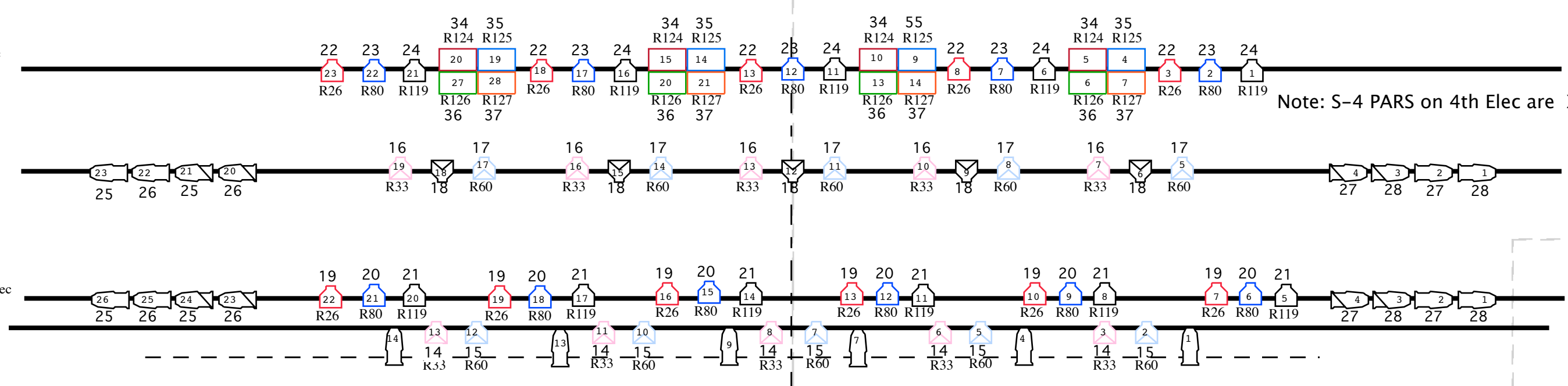
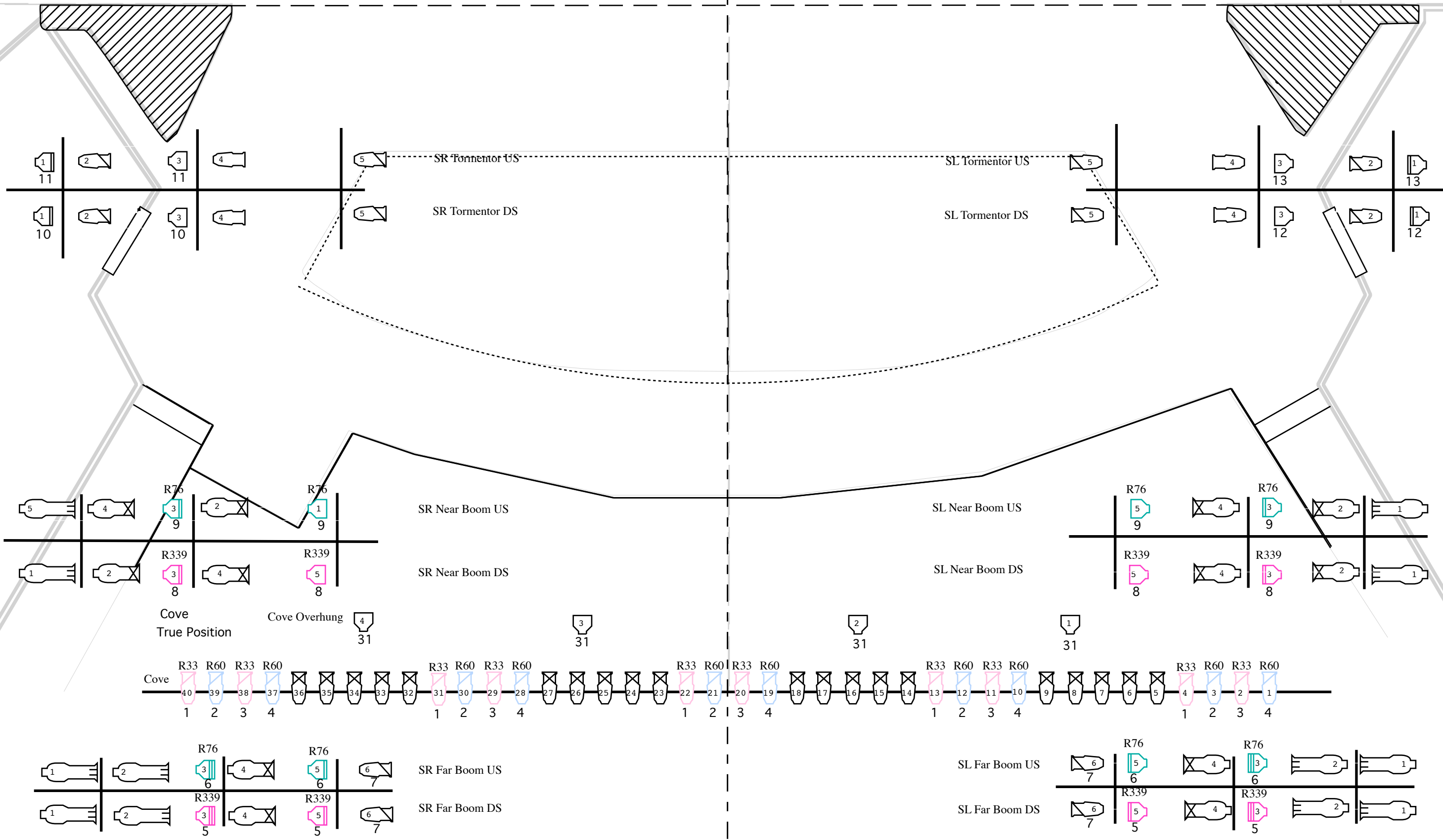


- 16 18'8" Cyc
- 15 17'8" 5th Elec
- 14 16'8" 3rd Trav
- 13 14'8" Open
- 12 13'8" Legs
- 11 12'8" 4th Elec
- 10 11'8" 2nd Border
- 9 9'8" Open
- 8 8'8" 3rd Elec
- 7 7'2" 2nd Trav
- 6 6'2" Open
- 5 6'2" 1st Border
- 4 4'2" 2nd Elec
- 3 3'2" 1st Elec
- 2 2'2" 1st Trav
- 1 1'2" Main Border



To Dressing Rooms
←



Repertory Lighting Plot 10/28/14

Venue: Shea Center For Performing Arts
Designer: Al Schaefer/Jill Erwin
10/28/14

Light Plot

Key		
	6x16 (12/30)	
	6x22 (12/20)	
	36° Source Four (18/25)	
	26° Source Four (40/42)	
	Narrow PAR (4)	
	Far Cyc (16/16)	
	5° Source Four (4)	
	19° Source Four (2)	