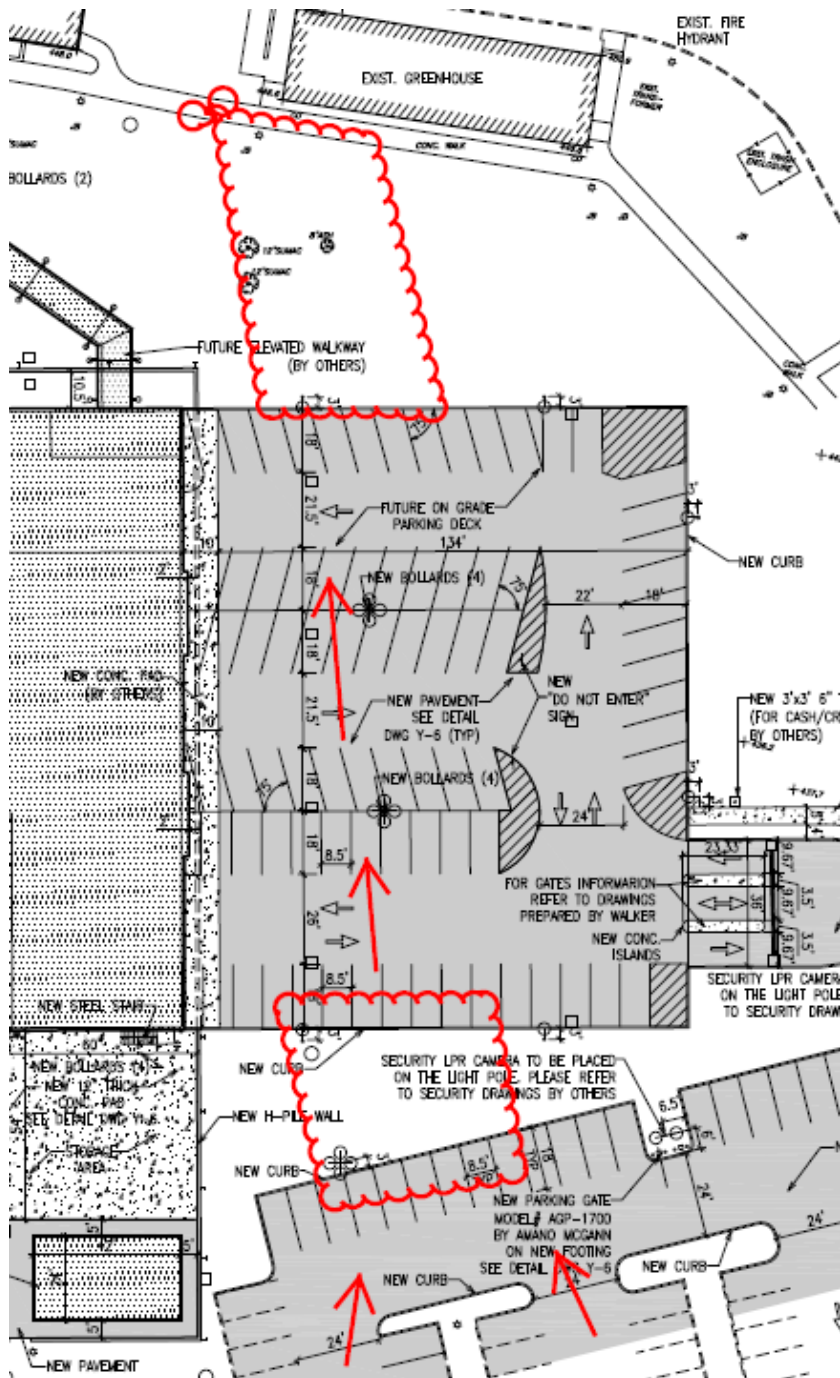


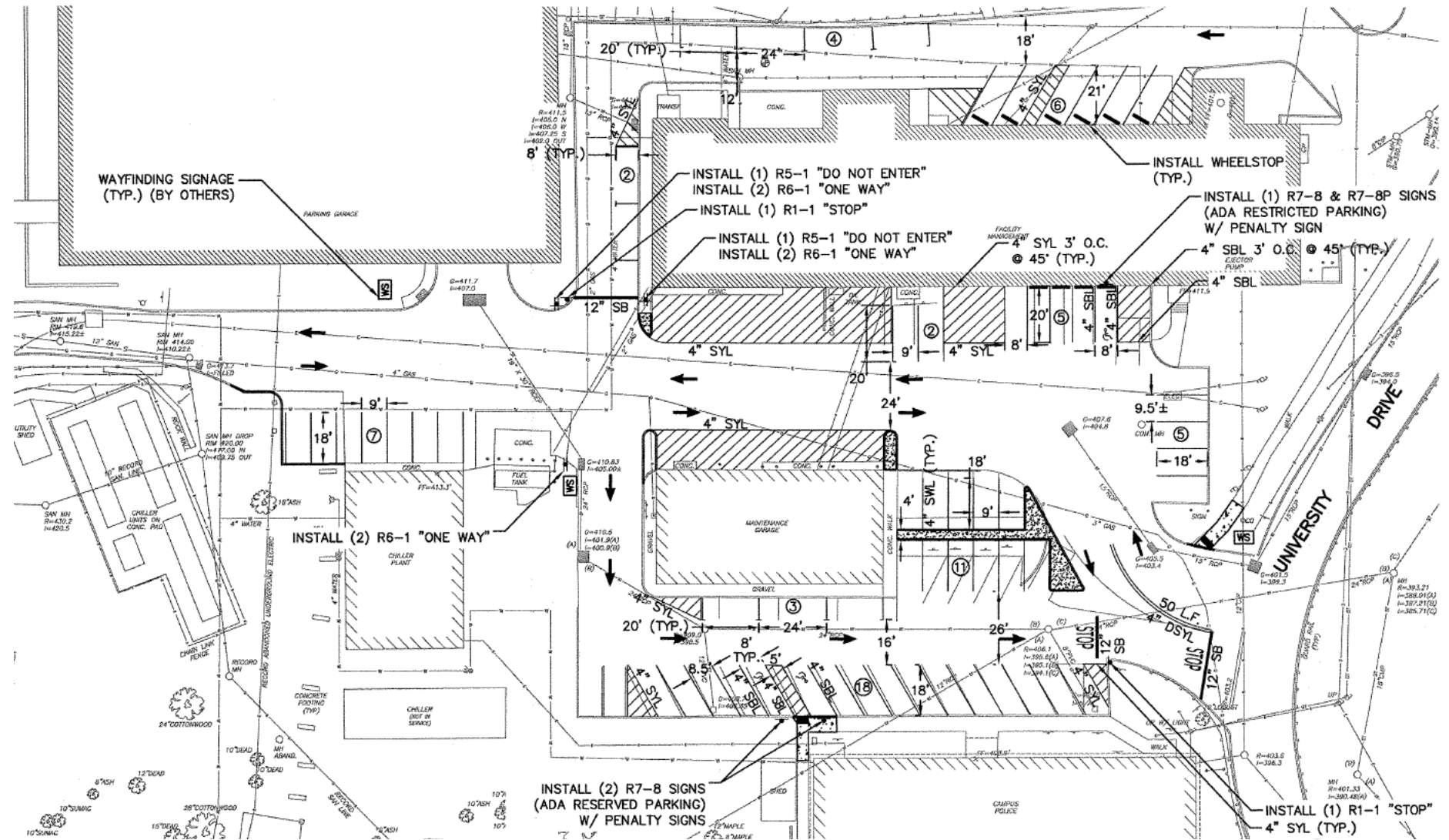
# Parking Committee

October 27, 2015

# Stairs Between Lot 2 and Greenhouse



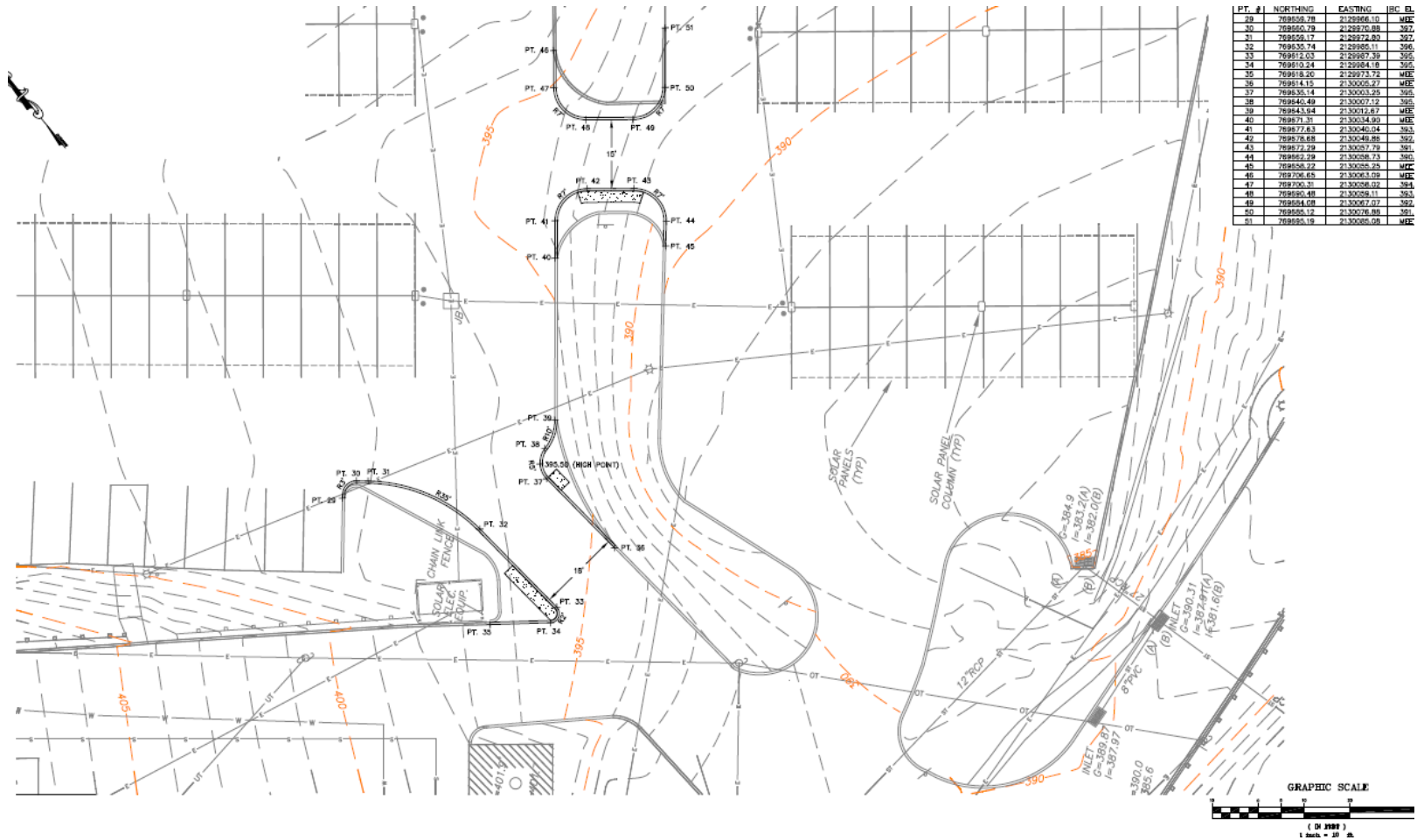
# Access to University Hall



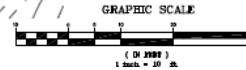
# Parking at Facilities and Police

- Reserved for Chief and PPO Director
- Three ADA spaces
- Visitor spaces. Parking garage nearby.
- 19 Police and 44 PPO Vehicles = 63 spaces
- Design is for 63 spaces
- Contractor Parking
- Enforcement Signage

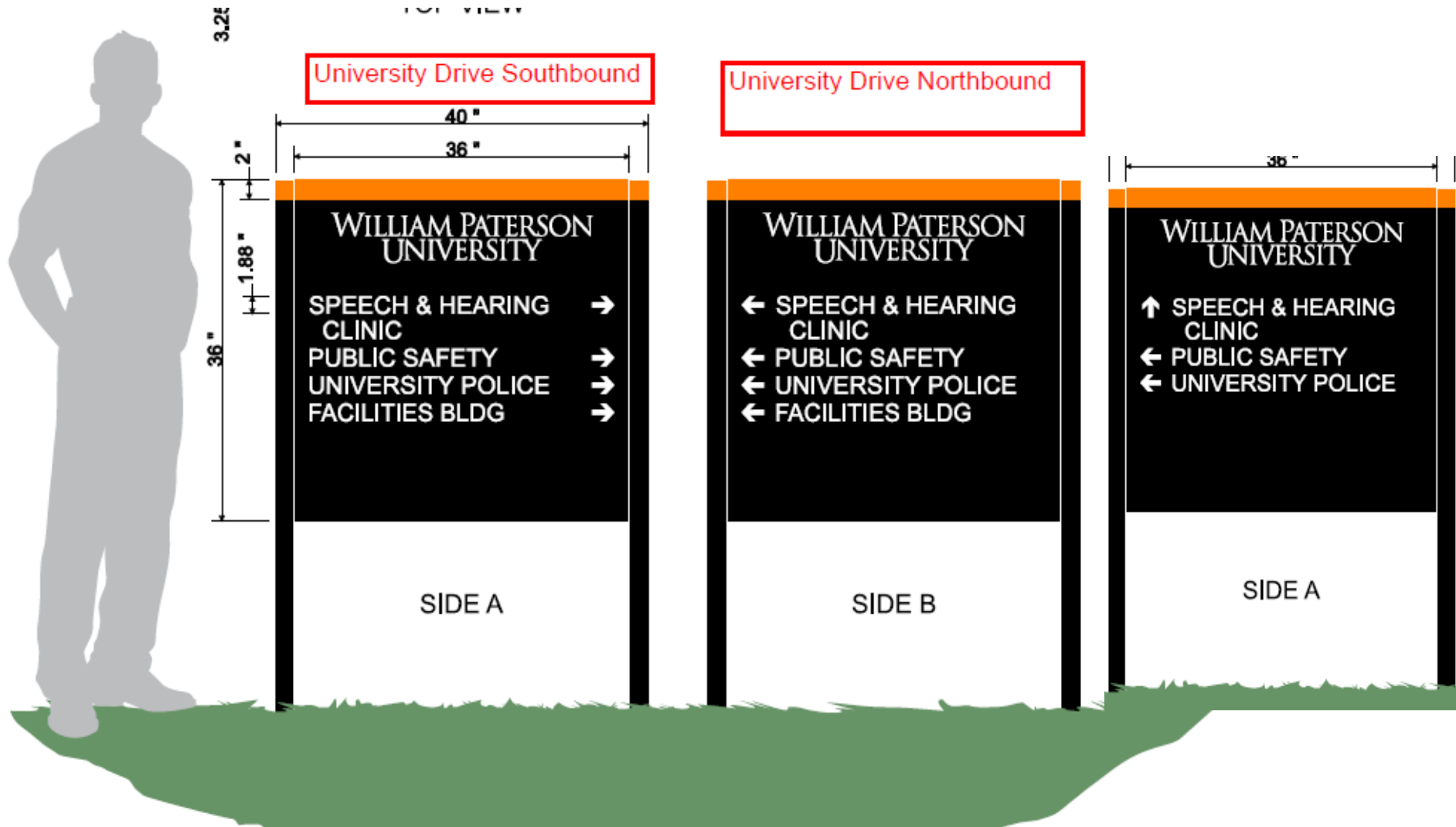
# New Gates in Lot 1



PT. #	NORTHING	EASTING	BC BL.
29	76855.78	2129566.10	MFE
30	76855.78	2128720.88	387
31	76855.17	2128722.80	387
32	76855.74	2129565.11	395
33	768512.03	2129987.39	395
34	768510.24	2129884.18	395
35	768513.25	2129773.72	MFE
36	768514.15	2130005.27	MFE
37	768535.14	2130003.25	395
38	76845.48	2130071.12	395
39	76843.64	2130012.87	MFE
40	768971.31	2130034.80	MFE
41	768971.83	2130046.04	395
42	768978.68	2130046.86	395
43	768972.28	2130037.79	391
44	768952.28	2130028.75	395
45	768958.22	2130028.25	MFE
46	769126.65	2130058.09	MFE
47	769126.31	2130058.09	394
48	768950.48	2130028.11	393
49	768954.08	2130027.07	394
50	768955.12	2130028.88	391
51	768955.16	2130028.08	MFE

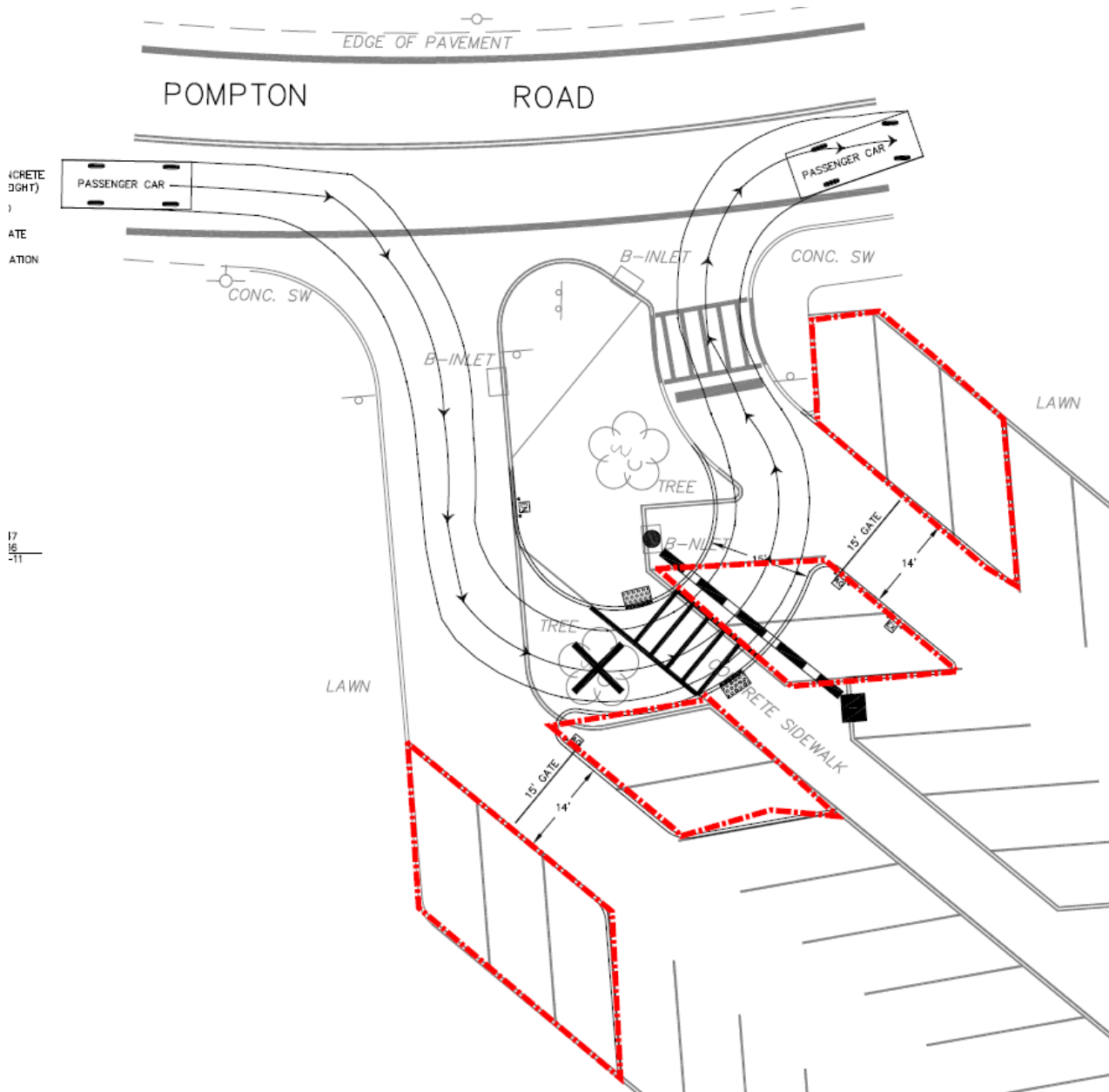


# Wayfinding Signage



# Gate at Lot

# 8



CONCRETE  
RIGHT  
ATE  
ATION

17  
16  
-11



# Ben Shahn ADA Access



# Phase A Hunziker Wing – 18 months



## Legend: Hunziker Wing Site Logistics Plan.

Site Fence Panel System	
Student/Staff Path	
Construction Traffic	
Tracking Pad	
Construction Signage	
Construction Office Trailer	
Construction Storage Trailer	
Top Soil	

## Phase A

Site Logistic Plan For:  
William Paterson University  
Hunziker Wing Renovations  
Sept 23, 2015 Rev8



### Site Logistic Notes:

- Contactor shall submit logistic plan for approval prior to mobilization.
- Logistic plan is subject to change by owner.
- Contactor shall limit the disturbance of surrounding areas. All areas disturbed within the construction area and surrounding areas shall be replaced in kind.
- This plan is conceptual and the contractor shall coordinate the staging of all materials, equipment, storage, etc., so it does not interfere with their work.
- Contactor shall coordinate all activities required outside of the site limits lines with the Owner and CM 24 hour prior to work taking place.
- Contactor shall include construction signage at all entrances of the site, and per OSHA 1910.145.
- The site shall be secured with gates and locks at the end of each work day.
- Contactor shall prune trees to allow for construction vehicle access, if trees interfere with access contractor shall advise the owner, CM, Architect.
- Contactor to allow parking onsite for Construction Manger staff. At least 3 spaces.
- Contactor to supply electric including all material and labor for temporary trailers. Contactor shall metered the Temp Electric.

# Phase B Hunziker Hall – 12 months

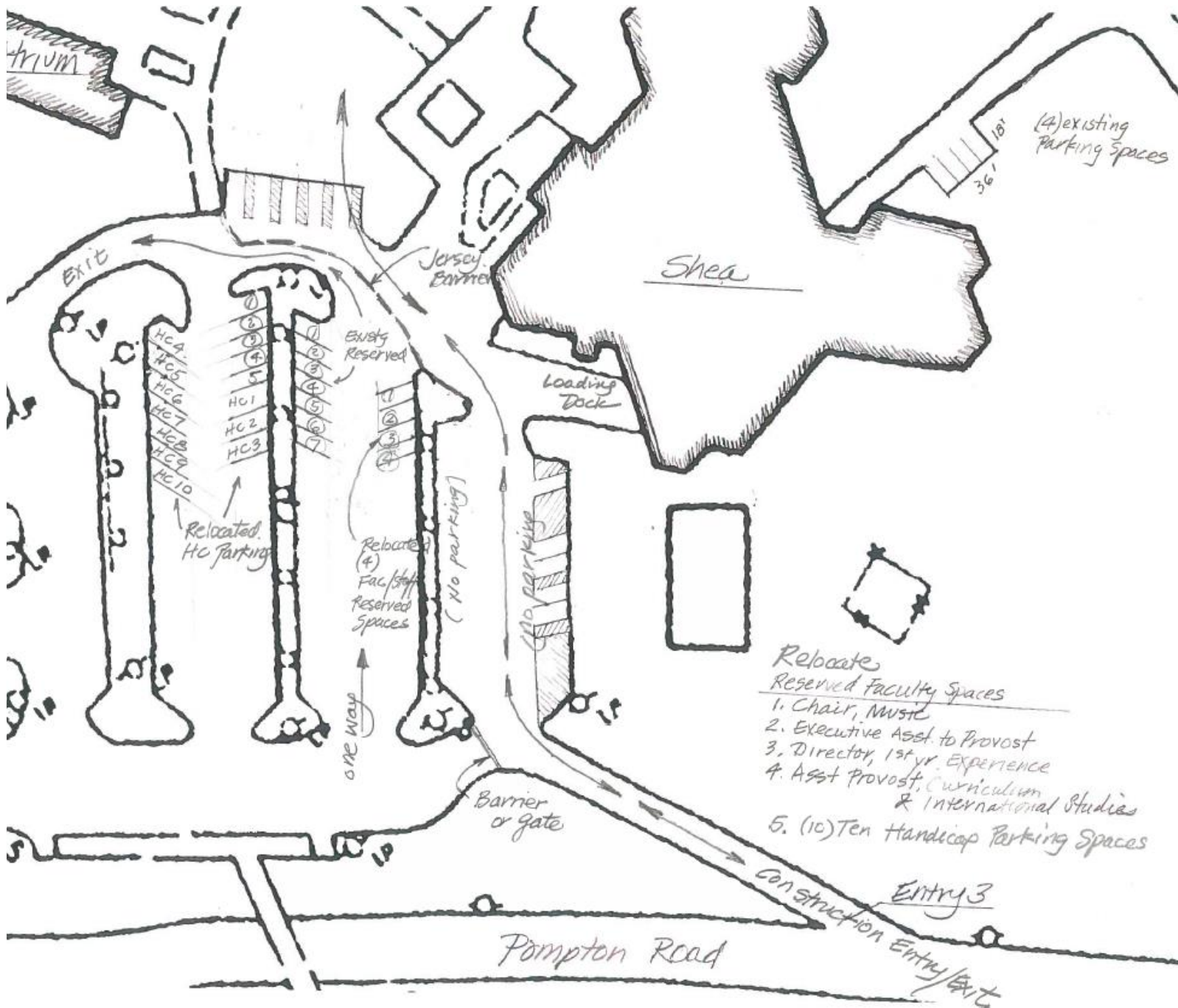


Legend: Hunziker Wing Site Logistics Plan.	
Site Fence Panel System	
Student/Staff Path	
Construction Traffic	
Tracking Pad	
Construction Signage	
Construction Office Trailer	
Construction Storage Trailer	
Top Soil	

## Phase B

Site Logistic Plan For:  
William Paterson University  
Hunziker Wing Renovations  
Sept 23, 2015 Rev8





(4) existing parking spaces

Shea

EXIT

Jersey Barrier

Loading Dock

HC4  
HC5  
HC6  
HC7  
HC8  
HC9  
HC10

HC1  
HC2  
HC3

Existing Reserved

1  
2  
3  
4  
5  
6  
7

Relocate (4) Fac/staff Reserved Spaces

(No parking)

No parking

Relocate

Reserved Faculty Spaces

1. Chair, Music
2. Executive Asst. to Provost
3. Director, 1st yr. Experience
4. Asst Provost, Curriculum & International Studies
5. (10) Ten Handicap Parking Spaces

one way

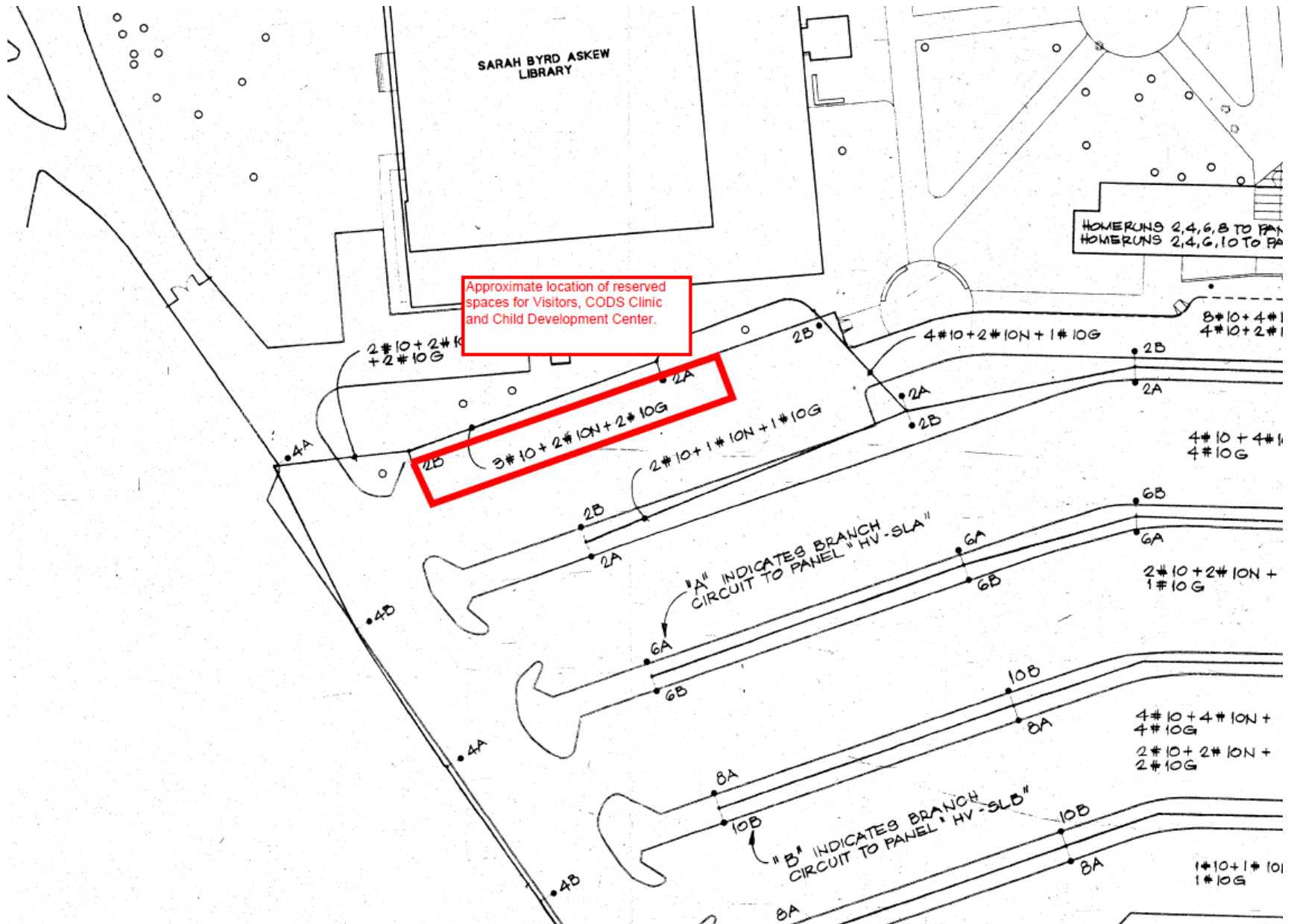
Barrier or gate

Entry 3

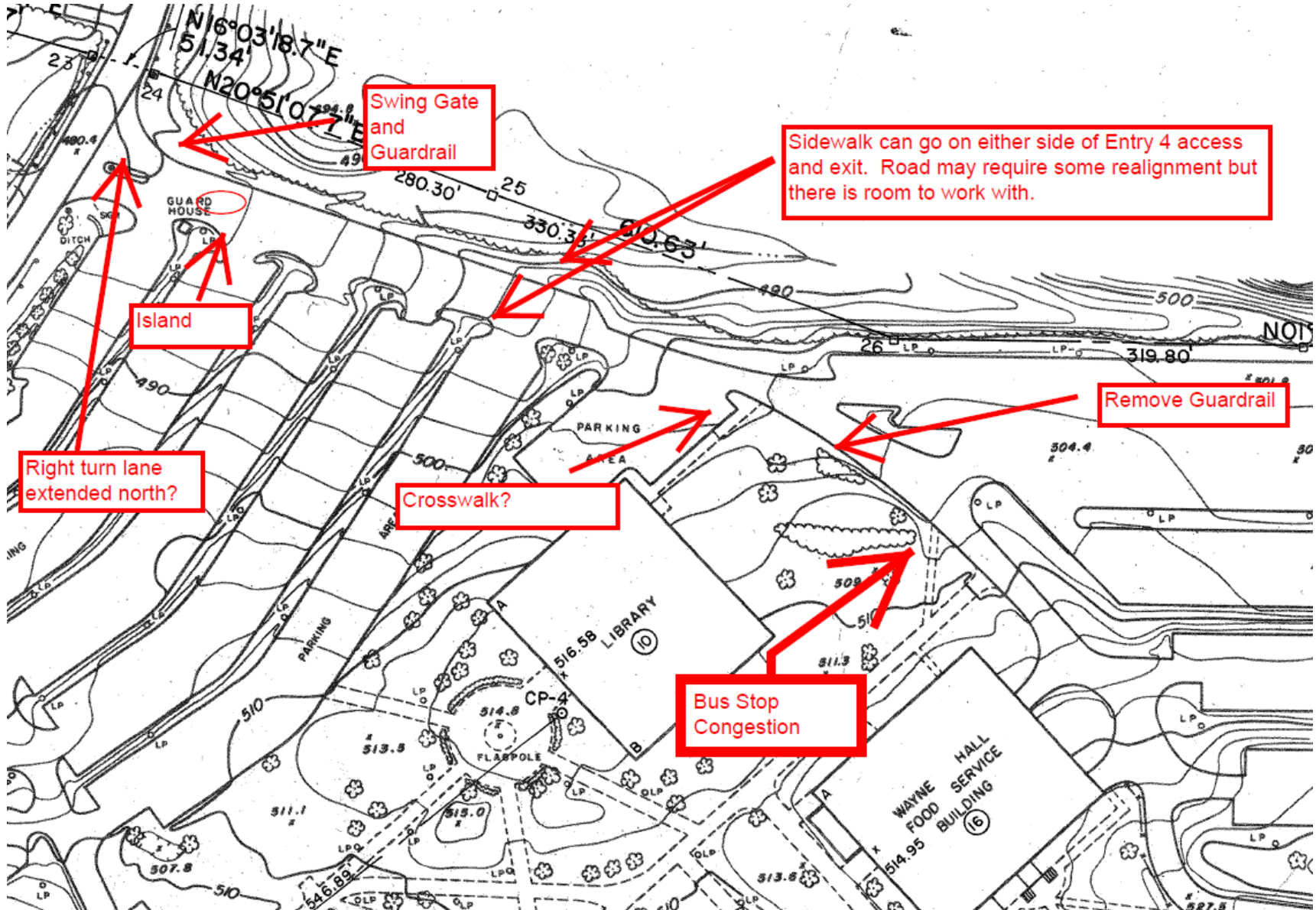
Construction Entry/Exit

Pompton Road

# Lot 4 Reserved Spaces



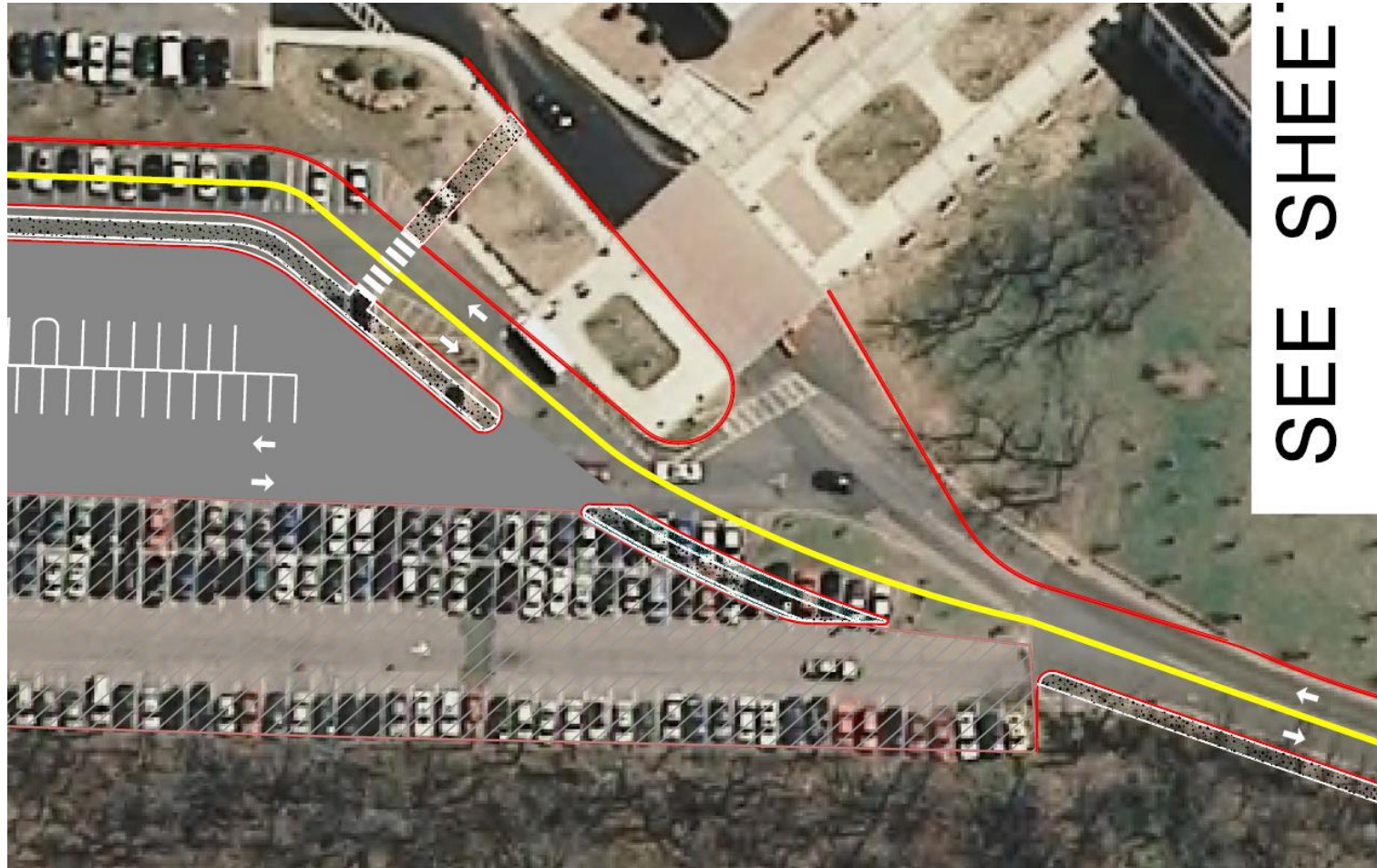
# Sidewalk from Entry 4



# Sidewalk from Entry 4 to Bus Stop



# Bus Stop, Crosswalk?



SEE SHEET













