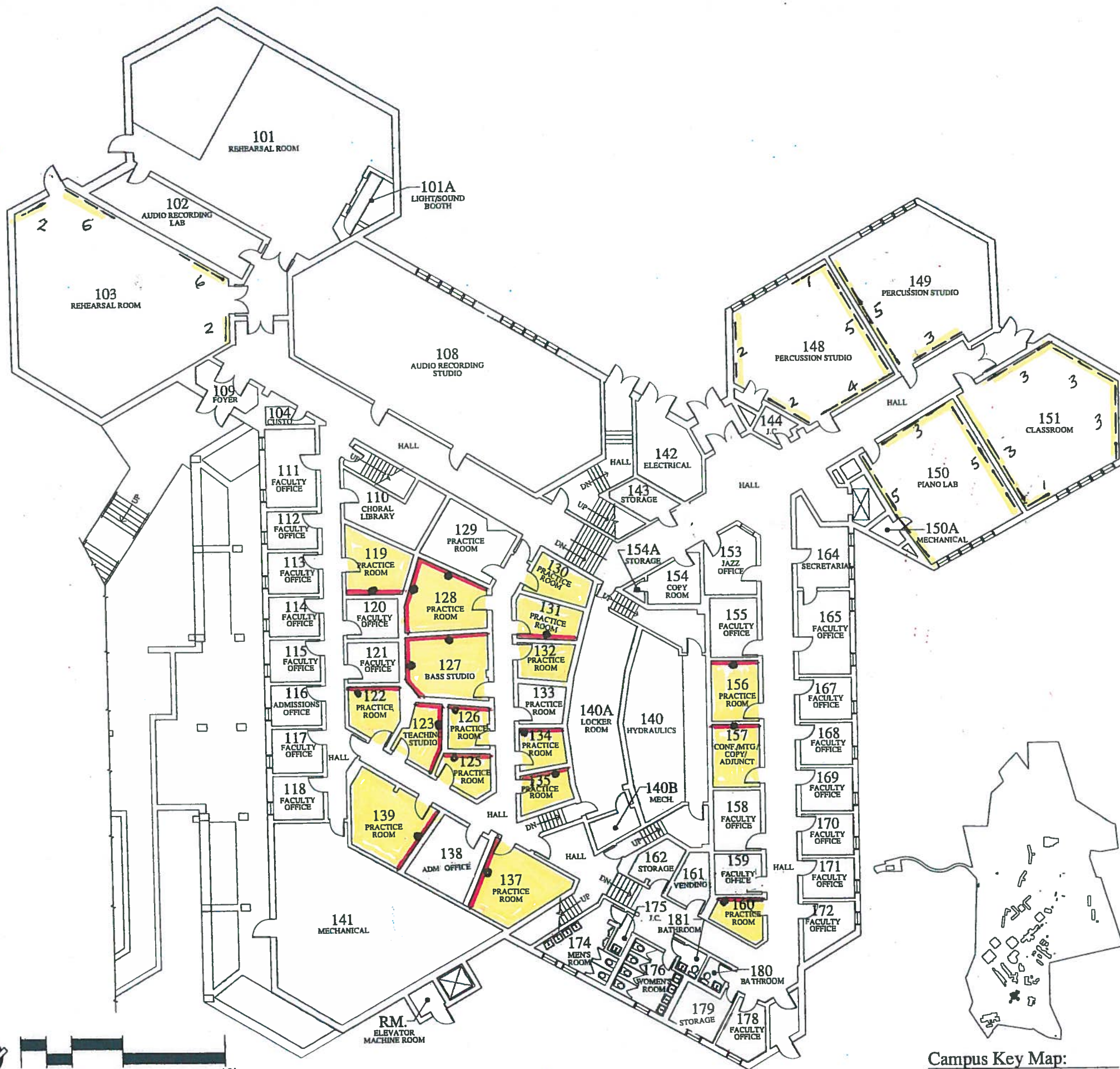


March 7, 2016

Shea Music Practice Rooms Work Scope

Note: extend exist. duplex outlet to face of new wall. Note: install rubber base on new wall to match existing. Note: ceiling heights vary. Note: 226 acoustical panels and clips provided by Univ.

Rm. No.	Title	Install Door Seals & Windows (41 each)	Ceiling Type	Remove Existg. 12"x12" Sq. Tiles	Reposition exist. fire strobe	Remove Existg. Acoustic Panels	Relocate Elec. Outlet	Sound Barrier Wall	Sound Barrier Wall Approx. Length	Install New 2x4 Acoustic Panels	Caulk & Paint
103	Rehearsal Room		Tectum Deck on Bar Joists							Install sixteen (16) 2x4 Acoustical Panels	
110	Faculty Office	Yes, see details	8'h Suspended Ceiling								
111	Faculty Office	Yes, see details	8'h Suspended Ceiling								
112	Faculty Office	Yes, see details	8'h Suspended Ceiling								
113	Faculty Office	Yes, see details	8'h Suspended Ceiling								
114	Faculty Office	Yes, see details	8'h Suspended Ceiling								
116	Faculty Office	Yes, see details	8'h Suspended Ceiling								
117	Faculty Office	Yes, see details	8'h Suspended Ceiling								
118	Faculty Office	Yes, see details	8'h Suspended Ceiling								
119	Practice Room	Yes, see details	8'h Suspended Ceiling				yes	Install sound barrier wall	11' long	Install nine (9) 2x4 Acoustical Panels	yes
120	Faculty Office	Yes, see details	8'h Suspended Ceiling								
122	Practice Room	Yes, see details	8'h Suspended Ceiling	Remove (17) tiles on three walls			yes	Install sound barrier wall	10' long	Install nine (9) 2x4 Acoustical Panels	yes
123	Practice Room	Yes, see details	sloping concrete	Remove (59) tiles on two walls			yes	Install two (2) sound barrier walls	20' long (2 walls)	Install nine (9) 2x4 Acoustical Panels	yes
125	Practice Room	Yes, see details	sloping concrete	Remove (22) tiles on two walls	yes		yes	Install sound barrier wall	9' long	Install nine (9) 2x4 Acoustical Panels	yes
126	Practice Room	Yes, see details	sloping concrete	Remove (26) tiles on two walls			yes	Install sound barrier wall	9' long	Install nine (9) 2x4 Acoustical Panels	yes
127	Practice Room	Yes, see details	sloping concrete				yes	Install two (2) sound barrier walls	27' long (2 walls)	Install thirteen (14) 2x4 Acoustical Panels	yes
128	Practice Room	Yes, see details	8'h Suspended Ceiling				yes (2 each)	Install two (2) sound barrier walls	28' long (2 walls)	Install thirteen (14) 2x4 Acoustical Panels	yes
129	Practice Room	Yes, see details	8'h Suspended Ceiling								
130	Practice Room	Yes, see details	sloping concrete	Remove (33) tiles on the walls; and (23) on the ceiling						Install nine (9) 2x4 Acoustical Panels	yes
131	Practice Room		sloping concrete			Remove (2) panels on one wall, then reinstall	yes	Install sound barrier wall	11' long		yes
132	Practice Room	Yes, see details	sloping concrete	Remove (24) 12x12 tiles						Install nine (9) 2x4 Acoustical Panels	yes
134	Practice Room	Yes, see details	sloping concrete	Remove (24) 12x12 tiles			yes	Install sound barrier wall	8' long	Install nine (9) 2x4 Acoustical Panels	yes
135	Practice Room	Yes, see details	sloping concrete	Remove (45) 12x12 tiles		Remove (4) large panels	yes	Install sound barrier wall	9' long	Install nine (9) 2x4 Acoustical Panels	yes
137	Practice Room	Yes, see details	8'h Suspended Ceiling				yes	Install sound barrier wall	14' long	Install sixteen (16) 2x4 Acou. Panels	yes
138	Admin. Office	Yes, see details	8'h Suspended Ceiling								
139	Practice Room	Yes, see details	8'h Suspended Ceiling				yes	Install sound barrier wall	14' long	Install sixteen (16) 2x4 Acou. Panels	yes
148	Percussion Studio	Yes, see details	Tectum Deck on Bar Joists							Install fourteen (14) 2x4 Acou. Panels	
149	Percussion Studio	Yes, see details	Tectum Deck on Bar Joists							Install eight (8) 2x4 Acoustical Panels	
150	Piano Lab	Yes, see details	Tectum Deck on Bar Joists							Install thirteen (13) 2x4 Acou. Panels	
151	Classroom	Yes, see details	Tectum Deck on Bar Joists							Install twelve (12) 2x4 Aco. Panels	
153	Jazz Office		8'h Suspended Ceiling								
155	Faculty Office	Yes, see details	8'h Suspended Ceiling								
156	Practice Room	Yes, see details	Drywall ceiling			Remove (6) large panels	yes	Install sound barrier wall	10' long	Install thirteen (13) 2x4 Acou. Panels	yes
157	Meeting Room	Yes, see details	12x12 acoustical tile glued to ceiling				yes	Install sound barrier wall	10' long		yes
160	Practice Room	Yes, see details	12x12 acoustical tile glued to ceiling			Remove (3) large panels	yes	Install sound barrier wall	10' long	Install nine (9) 2x4 Acoustical Panels	yes
164	Secretarial	Yes, see details	8'h Suspended Ceiling								
165	Faculty Office	Yes, see details	8'h Suspended Ceiling								
167	Faculty Office	Yes, see details	8'h Suspended Ceiling								
168	Faculty Office	Yes, see details	8'h Suspended Ceiling								
169	Faculty Office	Yes, see details	8'h Suspended Ceiling								
170	Faculty Office	Yes, see details	8'h Suspended Ceiling								
171	Faculty Office	Yes, see details	8'h Suspended Ceiling								
172	Faculty Office	Yes, see details	8'h Suspended Ceiling								
178	Faculty Office	Yes, see details	8'h Suspended Ceiling								



1 LEGEND/WALLS & PANELS



Remove 12x12 Tiles
Paint Room &
Mount Acoustical
Panels



Remove 12x12 Tiles
Install Sound Barrier Wall
Relocate duplex outlet
Paint Room &
Mount Acoustical Panels



Relocate duplex outlet



Mount Acoustical
Panels only

Shea Center for Performing Arts #001

Lower Level Existing Space Use

FACILITIES MASTER PLAN
FEBRUARY, 2003

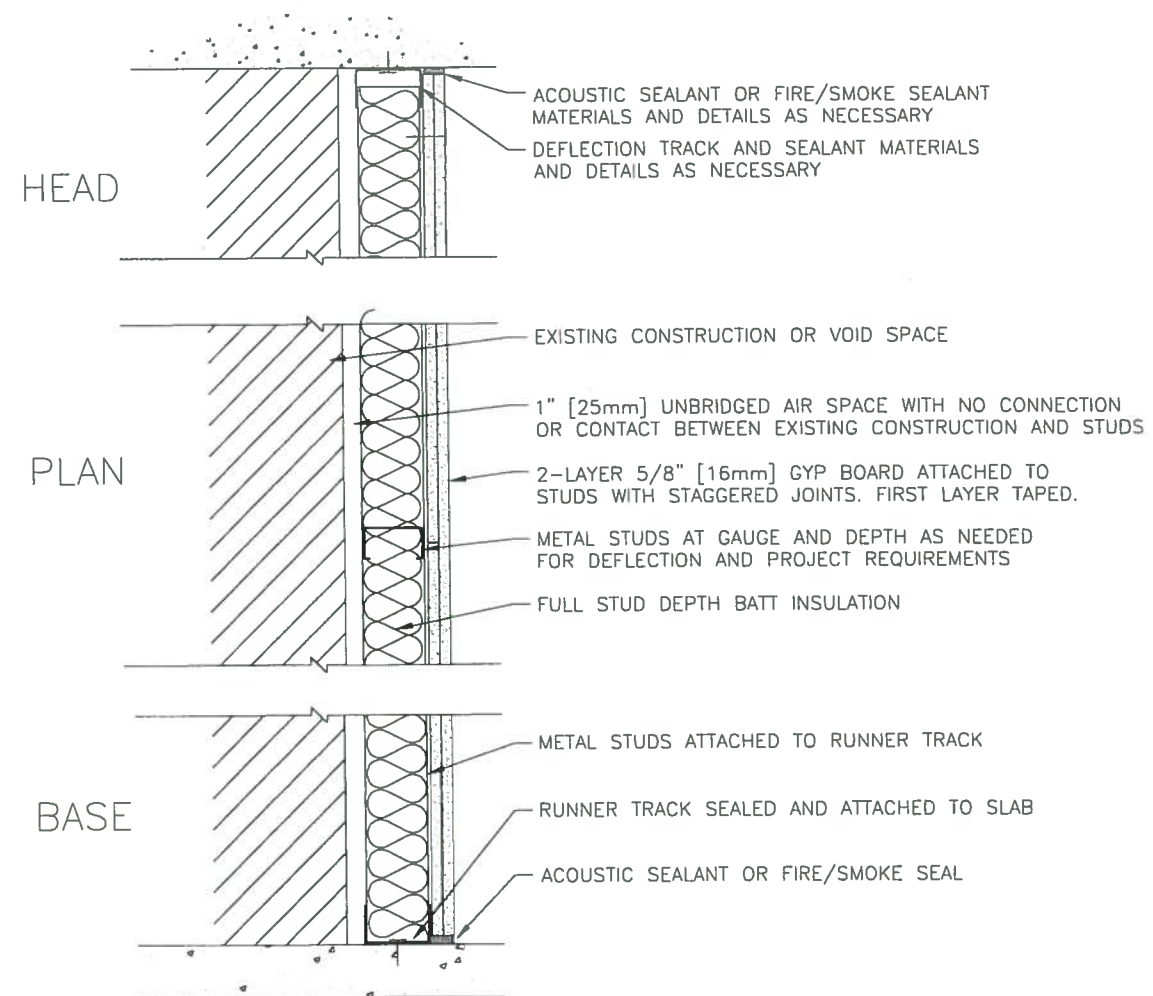
THE SARATOGA ASSOCIATES

LANDSCAPE ARCHITECTS, ARCHITECTS, ENGINEERS AND PLANNERS, P.C.
SARATOGA SPRINGS, NY ■ BOSTON, MA ■ NEW YORK CITY, NY

WILLIAM
PATERSON
UNIVERSITY

Campus Key Map:

This map is computer generated using data acquired by The Saratoga Associates from various sources and is intended only for reference, conceptual planning and presentation purposes. This map is not intended for and should not be used to establish boundaries, property lines, location of objects or to provide any other information typically used for construction or any other purpose when engineering plans or land surveys are required. Copyright © 2002 All Rights Reserved The Saratoga Associates T:\22042\new\buildings\001-Shea.dwg



PARTITION TYPE S2A
INDEPENDENT 2 LAYER DRYWALL
WITH INSULATION

KINETICS NOISE CONTROL

HardSide



A combination of great appearance, superior acoustical performance, and design flexibility makes Hard-Side Acoustical Wall Panels the perfect solution for many interior reverberant noise problems.

The traditional acoustical wall panel, HardSide offers design versatility. A variety of shaped edges and panel thicknesses allow you to design for the desired appearance and acoustics. The perfect solution for many reverberant noise problems this panel offers superior performance in both wall and ceiling applications.

The core of this panel is a 6-7 PCF fiberglass board. The edges are chemically hardened for durability. Fabric facing, from the FR 701 collection from Guilford of Maine or factory-approved, customer-selected fabric, is stretched over the panel, wrapped and bonded around the edges for a crisp, finished look. Vinyl finishes are also available.

Design for panel sizes up to a maximum 4 ft. x 10 ft. or custom shaped panels with angled or contoured perimeter cuts.



6300 Irelan Place
Dublin, OH 43017
1.800.959.1229 Toll-Free
www.kineticsnoise.com

Over 50 years of success solving acoustics and noise control problems!

HardSide

Description

A versatile fiberglass acoustical wall panel wrapped in a wide selection of fabrics or vinyls. Available with hardened shaped edges. Engineered sound control with thicknesses from 1 to 4 inches and sizes up to 4 ft. x 10 ft. 5' x 10' option available with 66-inch wide fabric

Composition

6-7 PCF density fiberglass core
Chemically hardened edges
Fabric faced with factory in-stock fabric by Guilford of Maine, or factory-approved customer-selected material

Fire Test Data

Class A per ASTM E 84

Acoustical Performance

Sound Absorption per ASTM C-423.
Type A Mounting

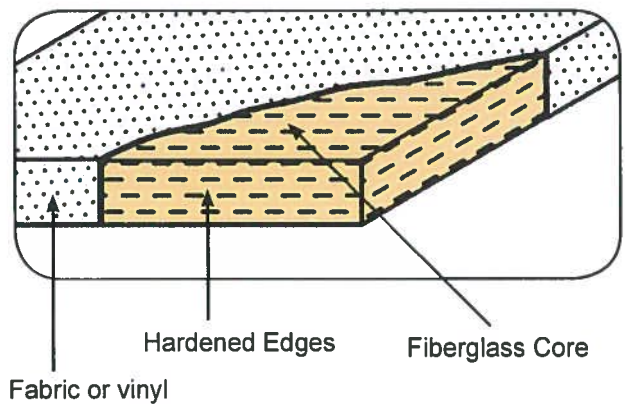
Frequency, (Hz)	125	250	500	1000	2000	4000	NRC
1" Thick	0.05	0.32	0.82	1.04	1.02	1.01	0.80
2" Thick	0.29	0.82	1.10	1.04	1.01	1.02	1.00
3" Thick	0.90	1.03	1.06	1.01	0.98	0.97	1.00
4" Thick	1.02	1.11	1.03	1.01	1.03	1.03	1.05

Applications

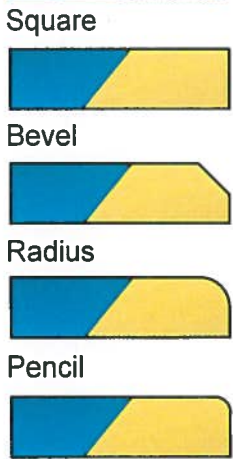
- Interior surfaces where superior acoustical performance is required.
- Conference Rooms
- Schools/Classrooms
- Auditoriums
- Media Rooms
- Multi-Purpose Rooms
- Churches
- Office Spaces
- Reception Areas
- Home Theatres
- Pro Theatres

Mounting

HardSide Impaling Clips with Adhesive
Rotofast Clips for ceilings
Z-Clips - movable
Velcro - movable
See [HardSide cloud panels](#) for ceiling suspension

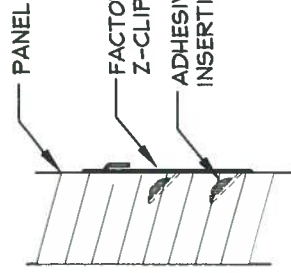


Edge Options

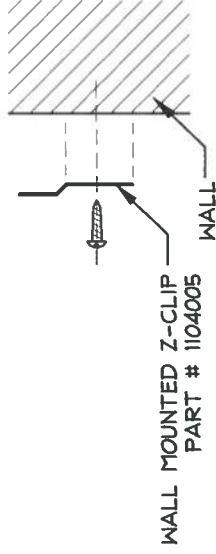


Download the Specification in CSI Masterformat at www.kineticsnoise.com



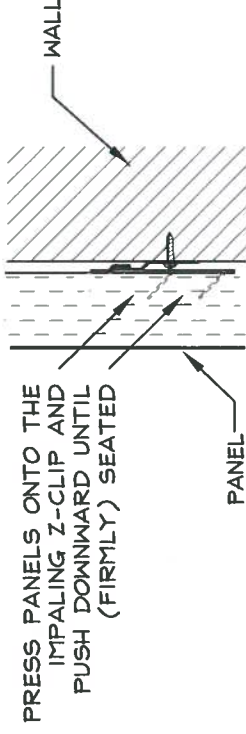
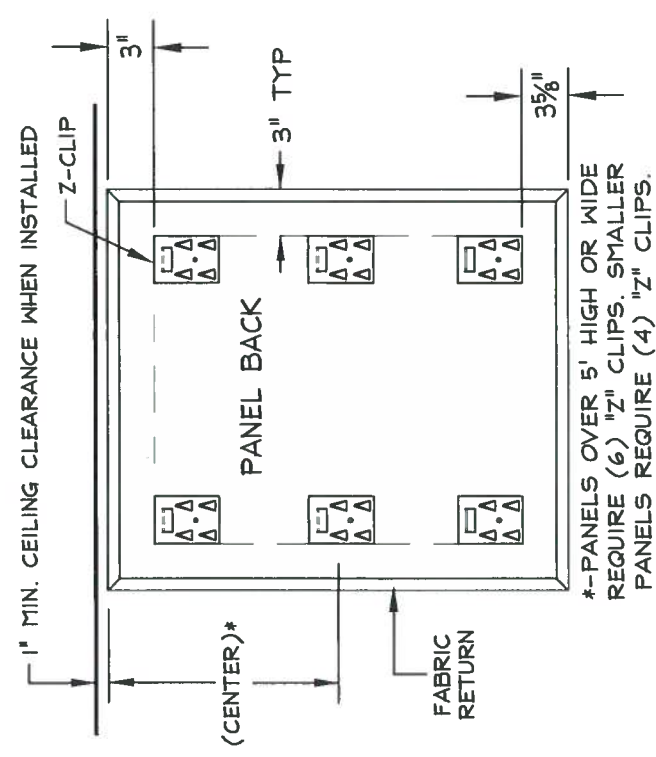


IF CLIP COMES LOOSE DURING SHIPPING APPLY CONSTRUCTION ADHESIVE AND REINSERT BASE CLIP



LOCATE "Z" CLIPS OR OPTIONAL "Z" BAR ON WALL AND SECURE AS REQUIRED FOR WALL SUBSTRATE

SLIDE PANEL DOWN ONTO CLIPS UNTIL FIRMLY SEATED



INSTALLED PANEL



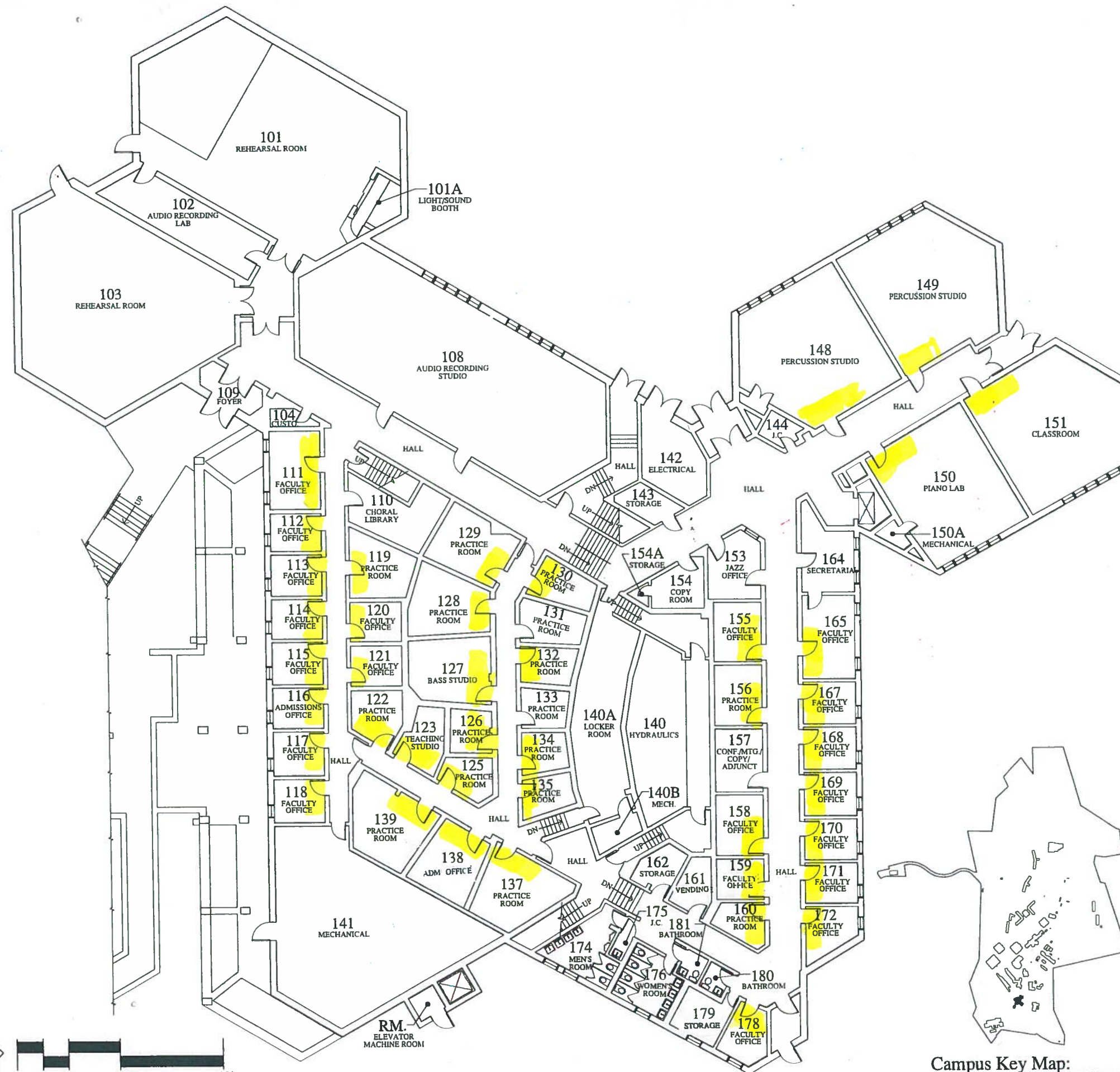
TITLE
FACTORY INSTALLED
Z-CLIP MOUNTING
INSTALLATION DETAILS

LAST DATE
REVISED
9/26/14

DRAWN BY
DS

DRAWING NO.
INSTAL06A

T-DWG



2 LEGEND/DOOR SEALS & WINDOWS



Install door seals & overlay 12"x12" window



No door seals or overlay window

Shea Center for Performing Arts #001

Lower Level Existing Space Use

FACILITIES MASTER PLAN FEBRUARY, 2003

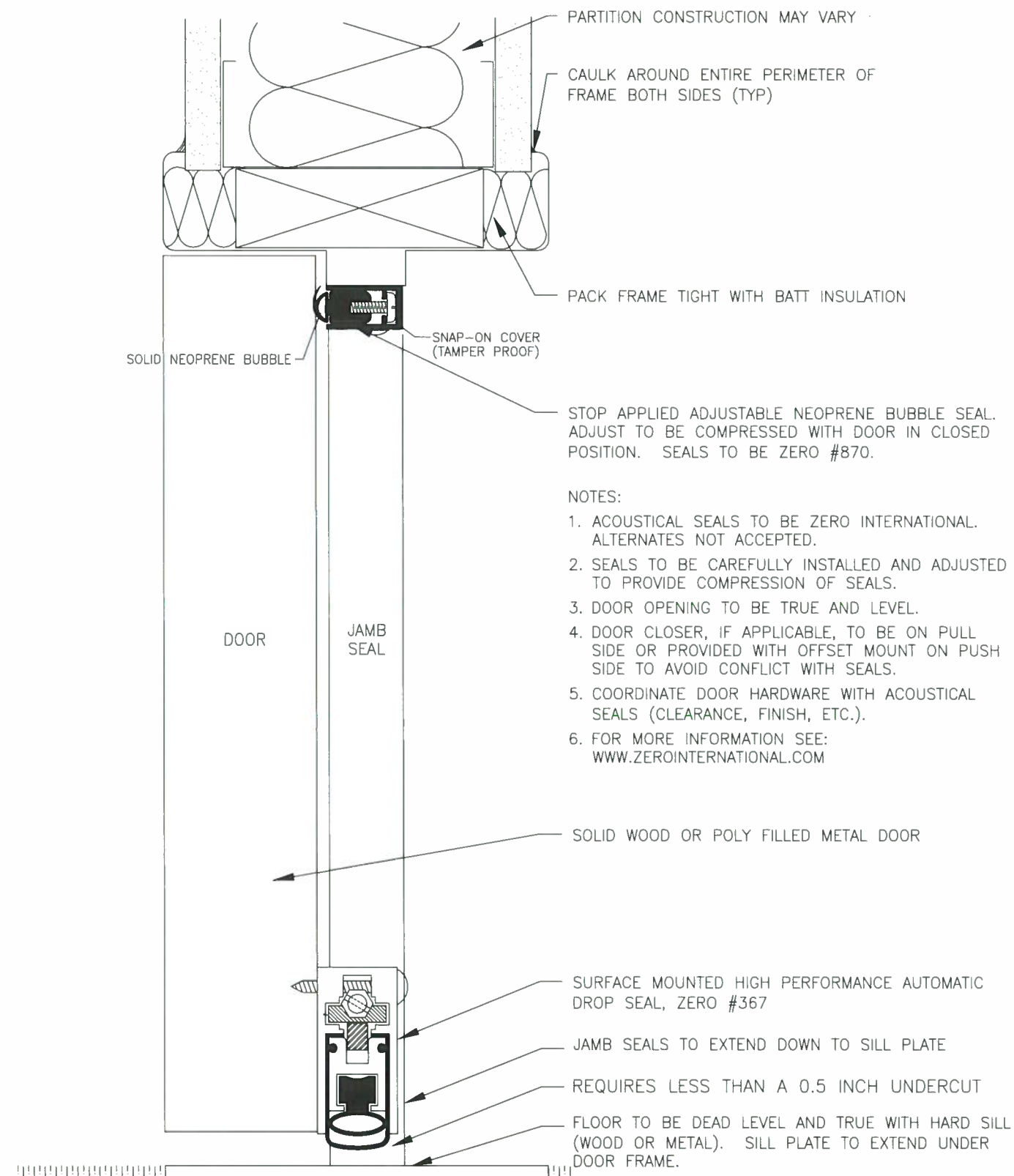
THE SARATOGA ASSOCIATES

LANDSCAPE ARCHITECTS, ARCHITECTS, ENGINEERS AND PLANNERS, P.C.
SARATOGA SPRINGS, NY ■ BOSTON, MA ■ NEW YORK CITY, NY

WILLIAM
PATERSON
UNIVERSITY

Campus Key Map:

This map is computer generated using data acquired by The Saratoga Associates from various sources and is intended only for reference, conceptual planning and presentation purposes. This map is not intended for and should not be used to establish boundaries, property lines, location of objects or to provide any other information typically need for construction or any other purpose when engineered plans or land surveys are required. Copyright © 2002 All Rights Reserved The Saratoga Associates
T:\02042\cod\buildings\001 - Shea.dwg



ACOUSTICAL DOOR SEAL APPLICATION
HEAD & JAMB SEALS WITH SEMI-MORTISED
FLUSH AUTOMATIC DROP SEAL



Typical Door / Practice Rooms & Offices



New Door Seal @ Door Head.



New Door Seals @ Door Jamb



New Door Seal @ Door Base



Existing Door Window



New Overlay Gasketed Window
Installed over EXISTING Window