

Shea Center Entrance Improvements

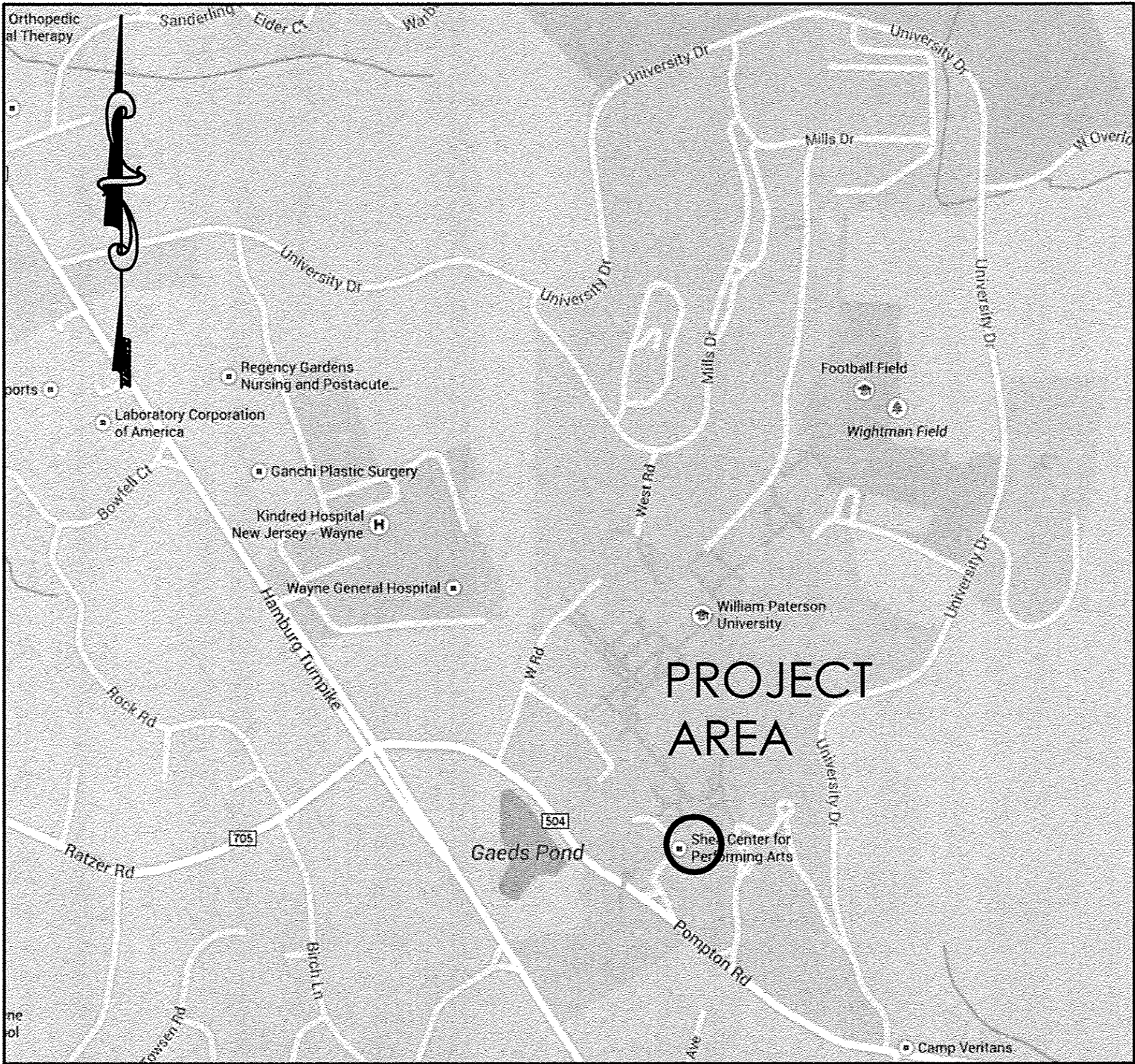
William Paterson University

Township of Wayne, Passaic County, New Jersey

INDEX OF SHEETS	
SHEET NO.	DESCRIPTION
1	TITLE SHEET AND SUMMARY OF QUANTITIES
2	CONSTRUCTION PLAN
3	REPAIR DETAILS

PUBLIC UTILITIES

GAS:	PUBLIC SERVICE ELECTRIC AND GAS (GAS)
ELECTRIC:	PUBLIC SERVICE ELECTRIC AND GAS (ELECTRIC)
CABLE:	CABLEVISION
TELEPHONE:	VERIZON
WATER:	TOWNSHIP OF WAYNE
SEWER:	TOWNSHIP OF WAYNE
STORM:	WILLIAM PATTERSON UNIVERSITY



PROJECT LOCATION MAP
N.T.S.
[MAP COURTESY OF GOOGLE MAPS, 2014]

SUMMARY OF QUANTITIES					
ITEM NO.	ITEM	UNIT	SHEA CENTER ENTRANCE	IF & WHERE QUANTITIES	TOTAL QUANTITIES
1	REMOVE AND REPLACE STUCCO WALL FINISH	S.F.	3,500		3,500
2	CLEAN AND RESET BLUESTONE CAP	L.F.	200		200

Plans prepared by:
BOSWELL ENGINEERING
330 PHILLIPS AVENUE
SOUTH HACKENSACK, NEW JERSEY 07606
Tel (201) 641-0770 . Fax (201) 641-1831
NJ Certificate of Authorization No. 24GA27958000

STEPHEN T. BOSWELL
PROFESSIONAL ENGINEER N.J. LIC. 34680

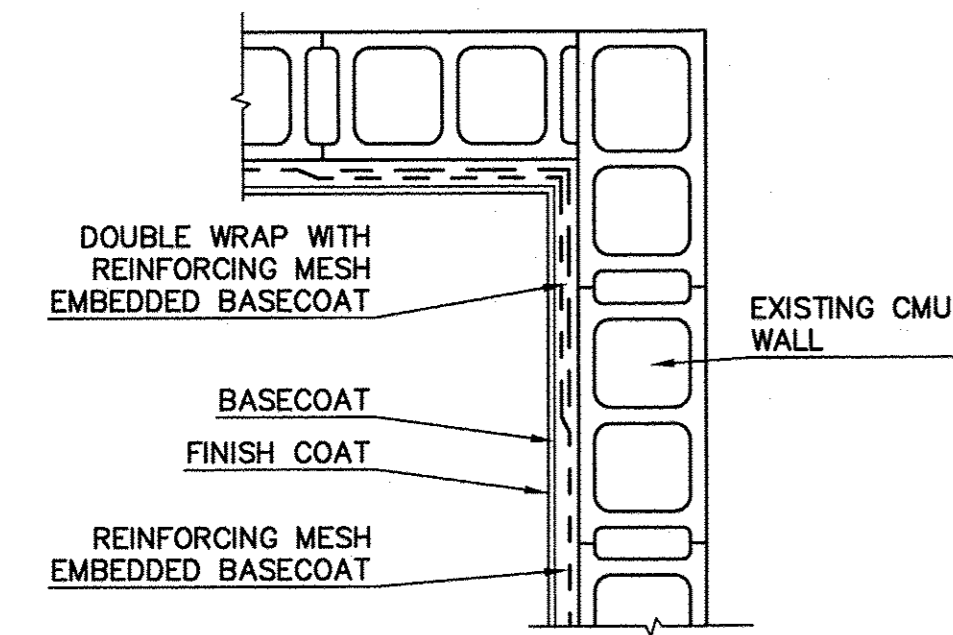
CHRISTOPHER J. NASH
PROFESSIONAL ENGINEER N.J. LIC. 31605

Christopher J. Nash

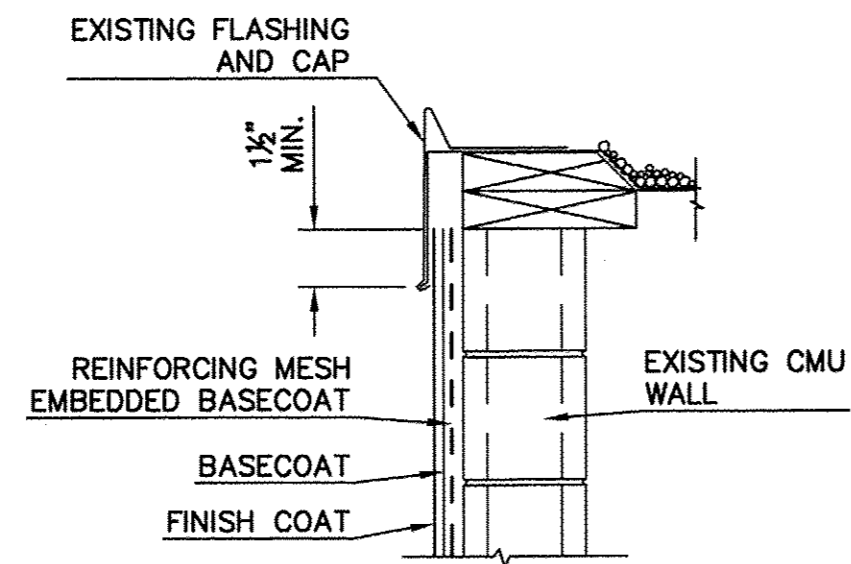
JOB NO. 16-119-A

May 20, 2016

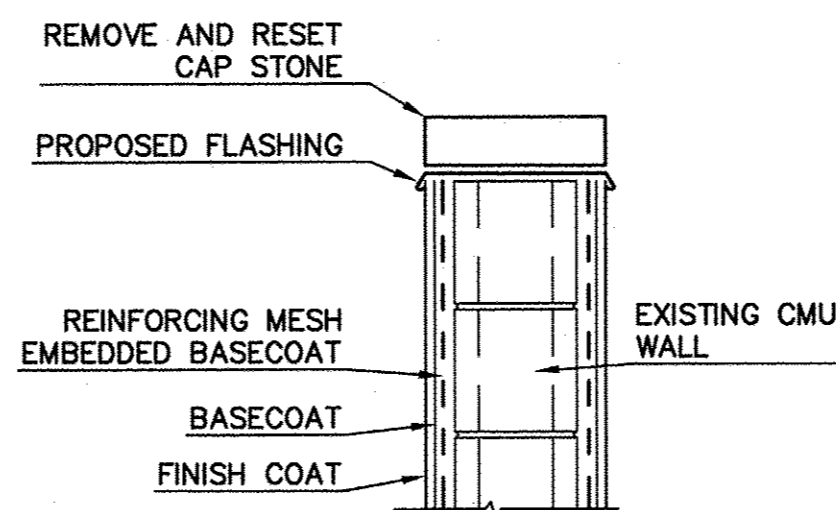
Note: This project is governed by 2007 New Jersey Department of Transportation Standard Specifications for Road and Bridge Construction and Standard Roadway Construction/Traffic Control/Bridge Construction Details, as amended herein.



STUCCO INSIDE CORNER
SCALE: N.T.S.



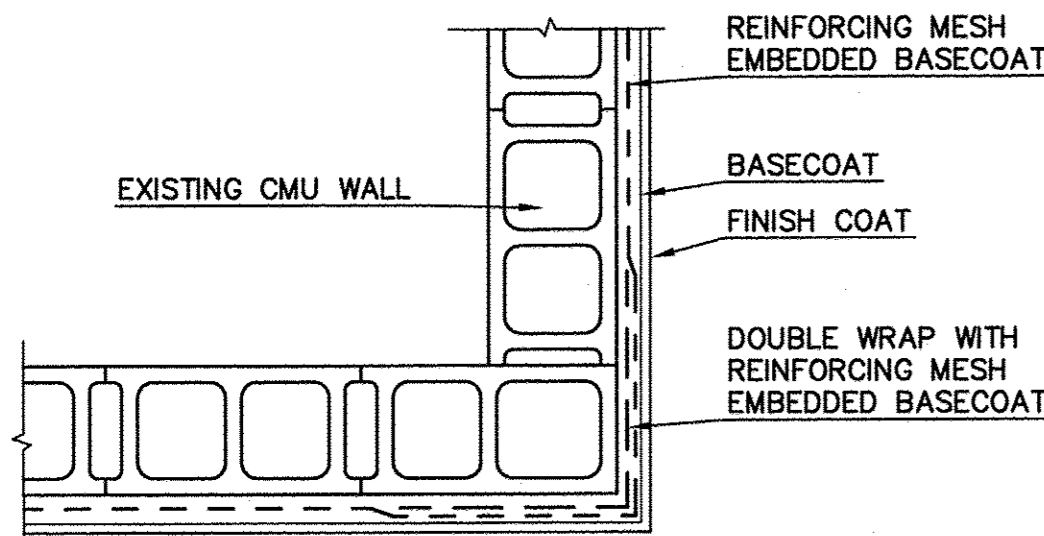
STUCCO ROOF TERMINATION
SCALE: N.T.S.



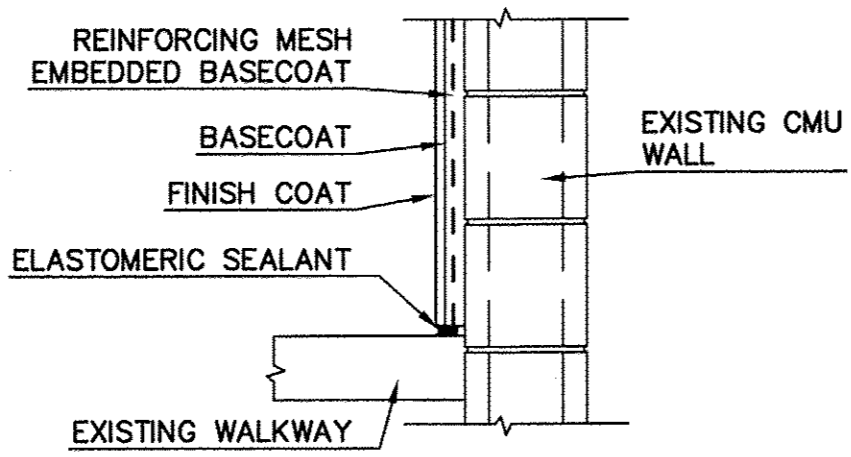
CAP STONE REPLACEMENT
SCALE: N.T.S.

- GENERAL NOTES**
1. ALL CONTRACTORS ARE RESPONSIBLE FOR ADHERING TO THE REQUIREMENTS AS SPELLED OUT IN THESE NOTES. ALL PARTIES MUST CAREFULLY STUDY ALL NOTES FOR ITEMS WHICH MAY PERTAIN TO THEIR TRADES. FAILURE TO READ THESE NOTES DOES NOT PERMIT THE CONTRACTOR TO DEViate FROM THEIR REQUIREMENTS.
 2. CONTRACTOR SHALL VERIFY ALL CONDITIONS AND CHECK ALL MEASUREMENTS ON THE JOB AND SHALL BE RESPONSIBLE FOR SAME.
 3. ALL WORK SHALL BE DONE IN ACCORDANCE WITH THE CURRENT BUILDING CODE OF ALL GOVERNING AUTHORITIES.
 4. ALL CONTRACTORS ON THIS PROJECT SHALL BE RESPONSIBLE FOR THE PROPER PERFORMANCE OF THEIR WORK, COORDINATION WITH OTHER TRADES, METHODS, SAFETY AND SECURITY ON THE JOB SITE. THE OWNER, ITS AGENTS, AND EMPLOYEES ARE NOT RESPONSIBLE OR LIABLE FOR THE ABOVE AND SHALL BE HELD HARMLESS AND INDEMNIFIED BY ALL CONTRACTORS AND SUBCONTRACTORS FROM ANY AND ALL CLAIMS, LOSSES, SUITS AND LEGAL ACTION WHATSOEVER ARISING FROM THE PERFORMANCE OF WORK ON THIS PROJECT.
 5. ALL CONSTRUCTION WORK SHALL BE PERFORMED IN ACCORDANCE WITH ALL APPLICABLE SAFETY CODES. APPLICABLE SAFETY CODES SHALL MEAN THE LATEST EDITION INCLUDING ANY AND ALL AMENDMENTS, REVISIONS AND ADDITIONS THERETO OF THE FEDERAL DEPARTMENT OF LABOR, OCCUPATIONAL SAFETY AND HEALTH ADMINISTRATION'S "OCCUPATIONAL SAFETY AND HEALTH STANDARDS" (OSHA); "SAFETY AND HEALTH REGULATIONS FOR CONSTRUCTION" OF THE STATE OF NEW JERSEY, DEPARTMENT OF LABOR AND INDUSTRY, BUREAU OF ENGINEERING AND SAFETY; "CONSTRUCTION SAFETY CODE", AND "MAINTENANCE, CONSTRUCTION AND DEMOLITION" AND "BUILDING CODE".
 6. FOR LOCATION OF STUCCO REPAIRS AND CAP REPLACEMENT, SEE SHEET 2 OF 3

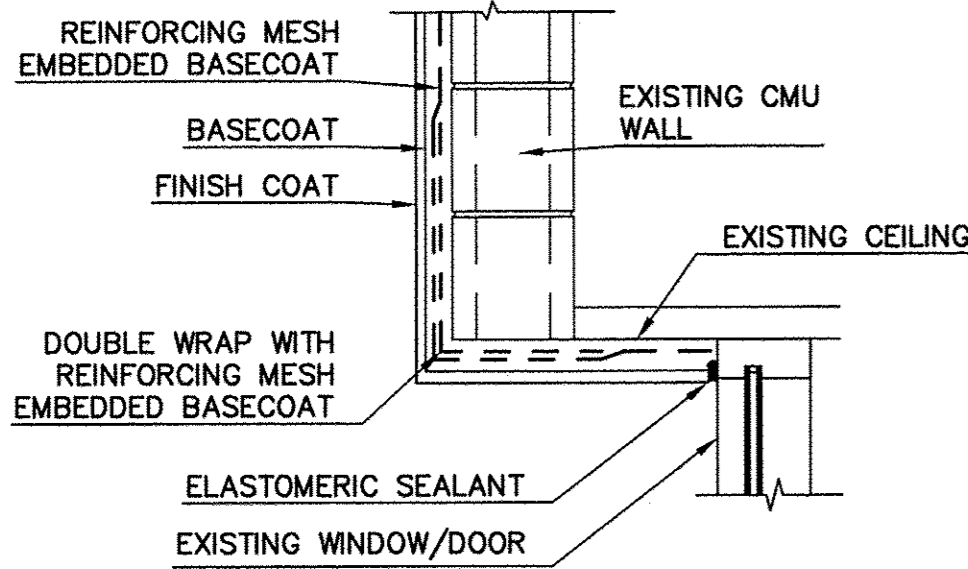
- STUCCO INSTALLATION**
1. SEE SPECIFICATIONS SECTION 615 FOR MATERIAL REQUIREMENTS FOR STUCCO FINISH.
 2. REMOVE ALL EXISTING FINISHES INCLUDING BUT NOT LIMITED TO EXISTING STUCCO AND PAINT, FROM WALLS.
 3. STUCCO SHALL HAVE INTEGRAL COLOR TO BE CHOSEN BY THE OWNER.
 4. REINFORCING MESH SHALL BE INSTALLED WITH CORROSION RESISTANT FASTENERS IN ACCORDANCE WITH ASTM C1063.



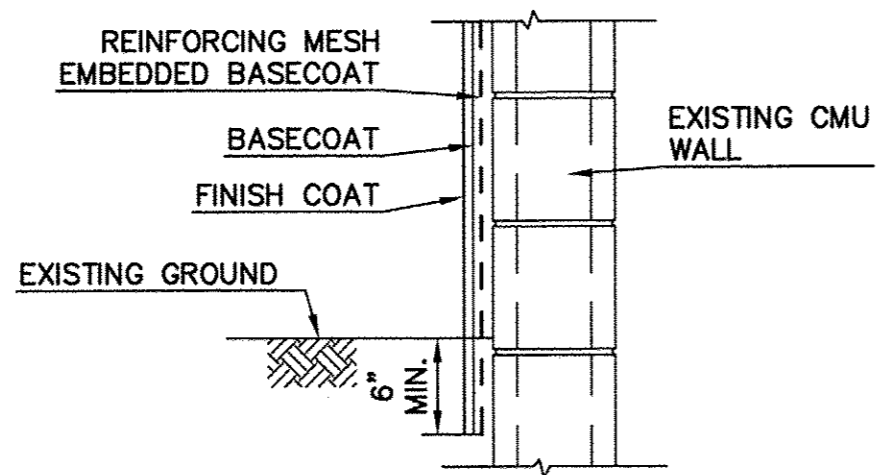
STUCCO OUTSIDE CORNER
SCALE: N.T.S.



WALKWAY TERMINATION
SCALE: N.T.S.



TERMINATION AT RECESSED OPENING
SCALE: N.T.S.



GROUND TERMINATION
SCALE: N.T.S.

STUCCO DETAILS

NO.	DATE	DESCRIPTION	SURVEYED BY	DRAWN BY	DESIGNED BY	CHECKED BY

Boswell ENGINEERING
 EST. 1924
 ENGINEERS - SURVEYORS - PLANNERS - SCIENTISTS
 330 PHILLIPS AVENUE, SOUTH HACKENSACK, N.J. 07606
 TEL: (201) 641-0770 • FAX: (201) 641-1831
 N.J. CERTIFICATE OF AUTHORIZATION NO. 24GA27958000

STEPHEN T. BOSWELL

PROFESSIONAL ENGINEER N.J. LIC. 34680

JOHN R. VALENTIN

PROFESSIONAL ENGINEER N.J. LIC. 37568

SHEA CENTER ENTRANCE IMPROVEMENTS
 REPAIR DETAILS
 TOWNSHIP OF WAYNE
 PASSAIC COUNTY NEW JERSEY

SURVEYED BY: TWO/CL	DESIGNED BY: TWO	SCALE: AS NOTED	JOB NO. 16-119-A	DATE: 5/20/16
DRAWN BY: TWO/CL	CHECKED BY: JRV			

CADD FILE: 16-119-ST (A) SHEET 3 OF 3