



OFFICE OF CAPITAL PLANNING, DESIGN, AND CONSTRUCTION  
300 POMPTON ROAD • WAYNE, NEW JERSEY 07470-2103  
973.720.2548 FAX 973.720.2829 • WWW.WPUNJ.EDU

### **ADDENDUM NO. 1**

TO: All Prospective Bidders  
DATE: April 7, 2016  
PROJECT: Music Department Interior Improvements  
(WP-16-02-01)

This Addendum No. 1 forms a part of the contract bidding documents and answers all questions submitted regarding the bidding documents.

#### **Clarifications and Update:**

1. Acoustical Panel Mounting Hardware: For the installation of the Kinetics Acoustical Panels, use the KineticsS-4 Impaling Pin method as per attached Kinetics Drawing INSTAL15 or similar approved tamperproof method.

#### **Questions and Answers:**

Q1. We received an invitation to bid the Music Department Interior improvement but I was wondering if this project is open to contractors who are not registered with the State public work registry?

**A1. As stated in The Instruction to Bidders paragraph IB 3.6: "The Public Works Contractor Registration Act (N.J.S.A. 34:11-56.48, et seq.) requires all contractors, subcontractors, or lower tier subcontractors (including subcontractors listed in bid proposals) who bid on or engage in the performance of any public work to register with the Department of Labor and Workforce Development. Therefore, Bidders must be registered by the bid due date. Subcontractors must be registered prior to award."**

Q2. Please provide additional information for bidding on Alternate#2 as to thickness, Fabric and color of 2' x 4' kinetics fabric wrapped acoustical panels.

**A2. The basis of design is the Kinetics Model "Hardside" Fiberglass Panels. Panels are constructed with a 4" thick 6-7 PCF density core and chemically hardened edges; an approved panel with better or equal performance characteristics may also be acceptable. Also include mounting hardware. Panels will be wrapped in a Guilford of Maine FR701 fabric, or equal.**

Q.3 PLEASE CLARIFY conflicting information on Scope of work document noting "install Owens Corning Eco Touch Pink Fiberglass R-30" and construction print partition type S2A which notes "Full depth batt insulation". Scope of work calls for 3 1/2" 20 Gage metal studs. This Owens Corning insulation is 9 1/4" in depth and is not a typical sound batt.

**A3. Use ROLUX AFB 3.5" x 16" Acoustical Fire Batt insulation, or approved equal with similar acoustical properties.**

Q4. Are there any alternates or allowances on this project? Please advise.

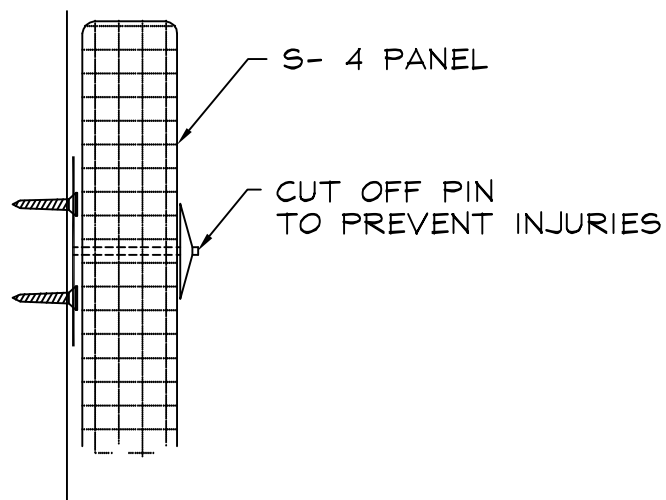
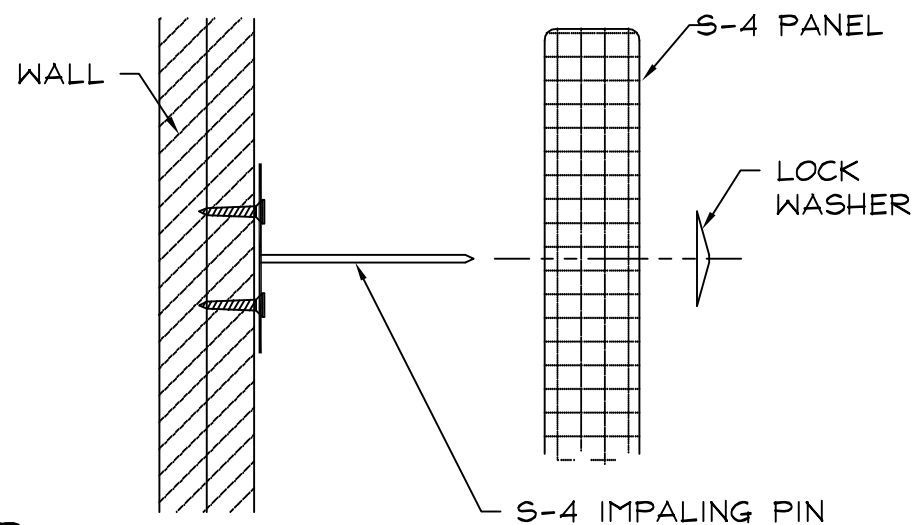
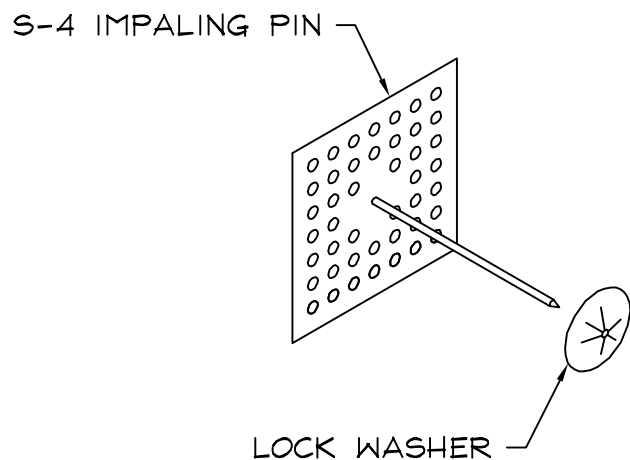
**A4. There are two alternates identified for this project. They are identified on the BID FORM. There are no allowances.**

Q5. Plans call for R-30 insulation however, we will only have a 4 5/8 stud cavity comprised of 3 5/8 stud and 1" air space. Please advise.

**A5. (see A3 answer to Q.3 question above)**

Q6. Item #3 in Scope of Services states: "In Practice Rooms where there is an existing duplex outlet in a wall that will be covered by a new sound barrier wall, move the electrical outlet to the face of the new sound barrier wall". Please specify the scope of work associated with relocating the duplex outlets.

**A6. The University will be responsible for roughing-in the new electric service to the Practice Rooms by or before May 16, 2016. The University will also terminate the electrical power to the existing outlets that need to be abandoned. After the contractor has installed the metal studs for the new sound isolation partitions, the University will install the new electrical box, and pull the new electric service to the box. After the contractor installs the acoustical sound batt insulation and drywall on the partition, the University will complete the installation of the duplex outlets.**



1. DETERMINE EXACT PANEL LOCATIONS
2. FASTEN IMPALING PINS TO WALL WITH SCREWS OR CONSTRUCTION ADHESIVE
3. IMPALE PANEL ONTO PINS
4. CUT OFF EXCESS PIN LENGTH

PANEL LENGTH	# OF CLIPS
UP TO 24"	4
24" TO 48"	4
48" TO 72"	4 - 6
72" TO 96"	6 - 8

NOTE: CONSTRUCTION ADHESIVE MAY BE USED IN ADDITION IF DESIRED